

NX300M

Firmware Upgrade guide (i-Launcher)



Digital Imaging Biz. CS Team

NX300M Firmware upgrade guide

- Easy Firmware upgrade: Please use i-Launcher program
(You can install “i-Launcher” program using installation CD)
- If you download Firmware from Samsung.com homepage directly,
→ refer to No.7(page 4)

※ Information

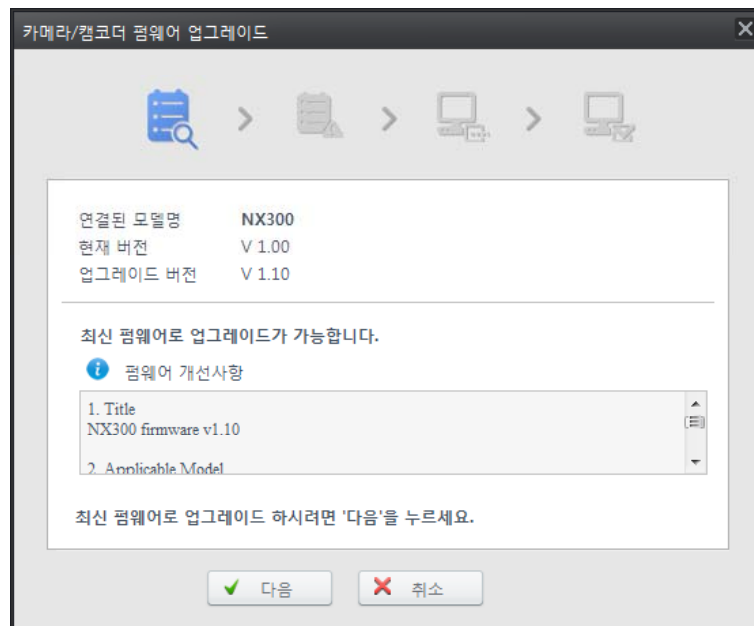
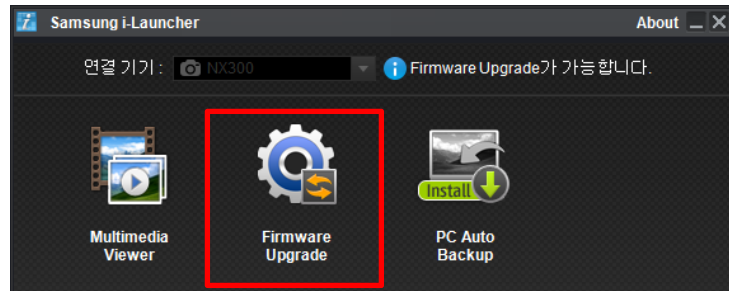
- 1) Use the full charged battery
- 2) Suggested memory card format before upgrade start
- 3) During the updating process:

Do not cut off the power / Do not remove the battery

→ It causes the cannot power-on or the severe damage
- 4) Finish upgrade: all menu will be reset

Firmware Upgrade method

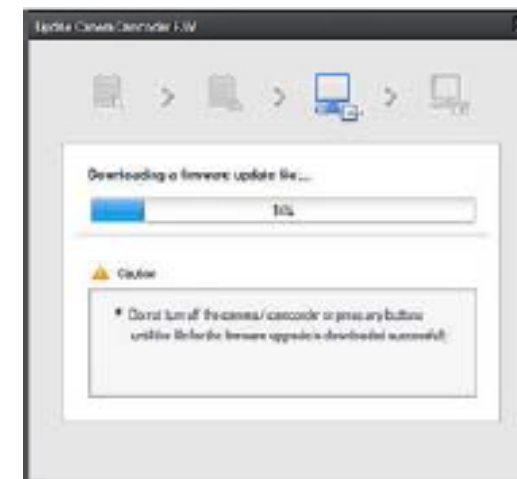
- 1. You can connect the camera to your computer
- 2. Opening “Samsung i-Launcher”
→ select “Firmware Upgrade” menu



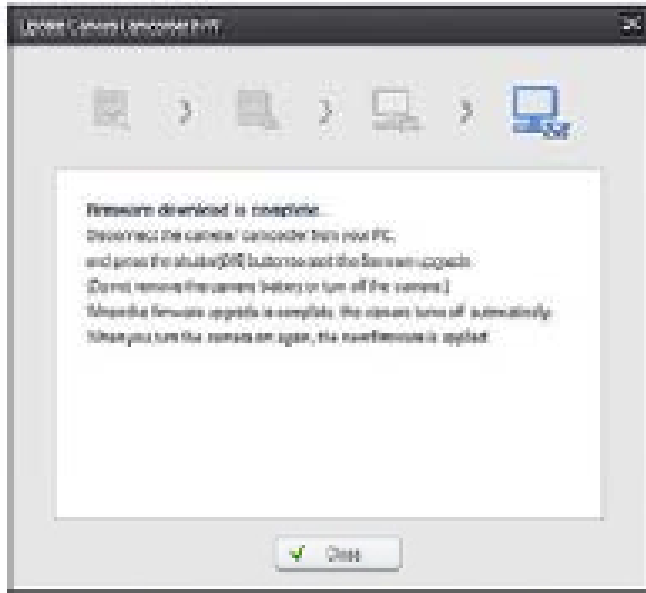
- 3. You can check precautions



- 4. Firmware download start



5. Once the transfer is complete, click the Close button



6. Terminate the USB cable connection

7. Turn the camera on

※ If you don't use i-Launcher but download Firmware from Samsung.com homepage directly → unzip "zip" file & copy firmware file to SD card

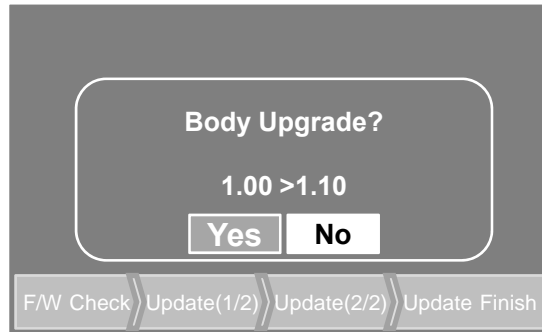
8. Select the MENU → Setting → Device Information



9. Select Firmware Update → Body Firmware Update



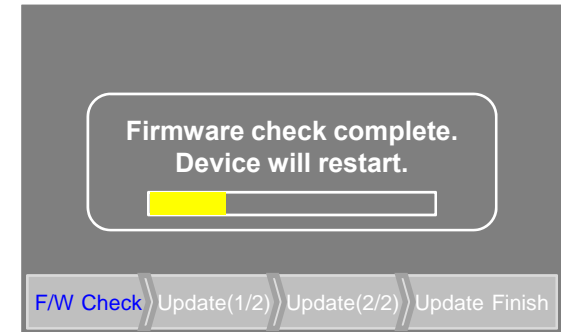
10. Update will start follow below sequence



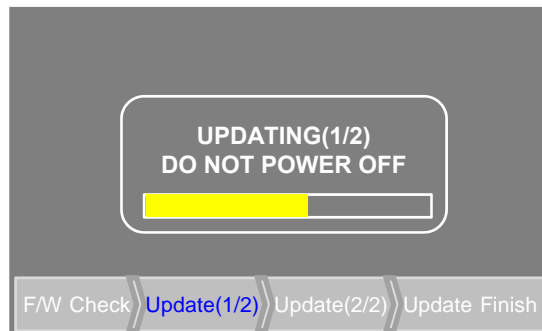
- ① Firmware version checking
Press "Yes" → Upgrade start



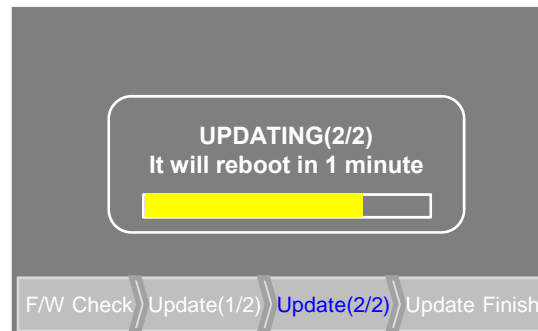
- ② checking firmware file



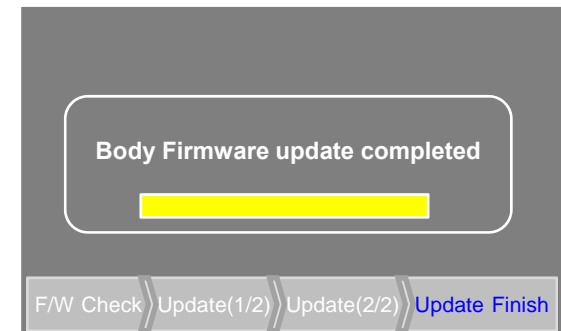
- ③ Device will restart after checking firmware



- ④ after restart → updating start
※ Do not cut off the power
Do not remove the battery



- ⑤ You can see the updating status
→ After finish updating(2/2)
→ Camera power-off & reboot
※ upgrade is not finished



- ⑥ Finish upgrade
→ You can see "Firmware update completed" message
※ If your camera stop or power-off during upgrading
→ Please retry upgrade