

SAMSUNG

DIGITAL CAMERA LENS

NX Lens-XL1203

SAMSUNG 12-24 mm F4-5.6 ED

SERVICE *Manual*

DIGITAL CAMERA LENS



CONTENTS

1. Repair information
2. Product specifications
3. Disassembly and reassembly
4. PCB diagrams
5. Block diagram
6. Firmware update
7. Exploded view and parts list

Contents

1. Repair information

1-1 Customer satisfaction statement	1-1
1 -2 Warranty and repair service information	1-1
1-3 Precaution for disassembly and reassembly	1-4

2. Product specifications

2-1 Specifications.....	2-1
2-2 Layouts.....	2-1
2-3 Accessories Information.....	2-2

3. Disassembly and reassembly

3-1 Disassembly.....	3-1
3-2 Reassembly	3-10

4. PCB Diagram

4-1 Main PCB (Top).....	4-1
4-2 Main PCB (Bottom).....	4-1

5. Block Diagram

6. Firmware update

6-1 Before updating the firmware	6-1
6-2 How to update the firmware	6-2

7. Exploded view and parts list

7-1 ASS'Y TOTAL	7-1
7-2 ASS'Y BARREL CAM	7-3
7-3 ASS'Y FOCUS RING.....	7-5
7-4 ASS'Y BARREL FRONT COVER	7-6
7-5 ASS'Y BARREL MAIN	7-7
7-6 ASS'Y BARREL-MOUNT_COVER.....	7-8
7-7 ASS'Y PCB MAIN	7-9

1. Repair information

1-1 Customer satisfaction statement



We hold ourselves to the highest standards of customer satisfaction and service.

- Combining perfect technical solutions with a customer-oriented approach is our top priority.
- We treat our customers we serve with kindness, loyalty, respect and dignity.
- We are committed to earn customers' trust continuously through excellence in repair solutions.
- We keep our promises and commitments to our customers.
- Committed to quick and easy resolution of all support issues, we deliver industry-leading response times.

[Guide]

We listen carefully to our customers' requirements and always find an optimum solution for their needs.

We are committed to your satisfaction and have procedures in place to provide you with a fair, timely and effective means to resolve problems. It combines industry leading preventive assistance with responsive support that helps us address problems quickly and effectively.

We will continuously maintain and improve our services to satisfy the needs of our customers.

1-2 Warranty and repair service information

(1) General terms and conditions

It is guaranteed to be free of charge from defects in material and workmanship under normal use for a period of one year from date of purchase.

Digital Camera and lens come with a one year limited warranty from the date of purchase.

*** The duration of the warranty depends on the laws in the country in which it was purchased.**

The following information will be required to process warranty requests:

- a. We imply warranties to one year from the original date of purchase. In the event that the purchaser is unable to provide a warranty card or proof of purchase, the warranty period will be determined by the date of manufacture. The warranty period shall be decreased to three months from the original product manufactured date.
- b. The coverage under this warranty begins on the date of your purchase of the product. In the event that a warranty card or proof of purchase is not available, a purchase receipt, preferably the purchase invoice, to confirm the date of purchase is required for warranty service.
- c. In the event that a valid date of purchase is not available, the warranty period will be determined by the date of manufacture. The warranty period shall be decreased to three months from the original product manufactured date.

(2) Limited Warranty

It reserves the right to retain any parts or components replaced at its discretion in the event of a defect noticed in the product. The period with respect to retaining components may vary respectively depending on its components. We are not liable to repair or replace its faulty product after the Warranty Period has expired.

*** We warrant its retaining camera and lenses for five years and three years for the accessories.**

- a. If a warranty claim is filed after the product has been discontinued, we reserves the right to honor the components warranty. Warranty period may vary depending on the type of components.
- b. In the event that no identical warranty information is available for service repair, company has the right to provide warranty. The warranty does not affect the consumers' rights against the company related to its information.

For the length of the period indicated on the chart below, it starts with the date of original purchase.

(3) Warranty Period for components

Our liability under this warranty shall be limited to the following:

- a. In the event of a same malfunction problem within two months after repair service by Samsung authorized technician, we will repair or replace free of charge the component of the product which is found to be defective.
- b. In the event of the component that you have paid the replacement cost is returned under normal use within one year at our premises, such components will be replaced free of charge component of the product which is found to be defective.

<Table. 1-1 Warranty periods for parts>

Part Name	Warranty Period
Battery Charger	Six months
AC Adaptor	
Battery	
Remote Control	
CD Software	Three months
Earphone	
Pouch for camera	Not applicable
Cable	

(4) Repair Claims

1) Repair free of charge

Essentially, the following causes of damage are covered:

- a. Failing to function properly under normal use during the limited warranty period.
- b. Repair Services free of charge is granted for the performance of a specific contract.

2) Repair charges

This warranty does not cover damage caused by:

- a. Defect occurring after the expiration of the Warranty Period.
- b. Damage due to negligence, immersion in water, impact, loss and tampering.
- c. Repair or alteration performed by any party other than Samsung authorized technicians.
- d. Misuse or other improper use of the power button.
- e. Exhausted parts such as batteries, lamps and filters, etc.
- f. Defect that occurs due to sand, dirt liquid, etc. entering the inside of the product casing.
- g. Consumable parts which have ceased working through normal use such as as earphone, battery discharger and various accessories.
- h. Products purchased second hand or any damage that occurs due to a second hand or repair performed by anyone other than Samsung or a Samsung authorized service station.
- i. Fire, earthquake, flood or other natural disasters.

The warranty cover period for components is listed below as per table 1-2.

<Table. 1-2 Warranty period for components>

Types of consumer damages		Compensation		
Failing to perform or failing to function properly under normal use	Required for essential repair within 10 days after the purchase	Replace the product or refund	-	
	Required for essential repair within one month after the purchase	Replace the product or repair at free of charge	Repair charges	
	Applicable to repair	Problem occurred twice due to same malfunction	Free of charge	
		Problem occurred three times due to same malfunction	Replace the product or refund	Repair charges
		Problem occurred four times due to some other malfunction		
Not applicable to repair	Within the period with respect to retaining components	Replace the product at the cost of the depreciated value or refund its price added 10% of depreciation		
Failing to perform or failing to function properly as a result of willful intent and negligence of customer	Applicable repair		Repair charges	
	Not applicable to repair (Except for defects or malfunction as a result of fire or flood or other natural disasters)		Replacement charge	Repair charge and replace the product at the cost of the depreciated value

1-3 Precaution for disassembly and reassembly

CAUTION

1. Use the anti-static handling procedures included with the anti-static mat to ensure that there is no electrostatic discharge and component damage.
2. Static electricity is the biggest danger to the PCB parts you are about to disassemble or assemble. It's important to use your anti-static wrist strap to prevent damage to these components.
3. Dismantling a discrete electronic component such as main capacitor is dangerous. The capacitor contains high voltage, which can cause a severe electric shock if you touch it. This holds a charge even when the unit is not plugged in and is capable of delivering a fatal shock.
4. Using excessive force during disassembly and assembly can damage locking parts. Use care when handling "Locking parts" to avoid damage to FPCB or wire. Apply pressure only at the points designated in the maintenance instructions.
5. Due to increasing environmental concerns, a number of restrictions have been placed on the material content of electronic components and electronic assemblies. It requires utilizing Lead-Free (Pb-free) Soldering.
6. The following precautions must be observed when handling such components below.

<Table. 1-3 Precaution for disassembly and reassembly>

Component	Precautions
FPCB	FPCB is brittle material. It can be easily damaged thus it should be handled with care. It is recommended to use wooden or plastic tweezers for manual placement.
CCD (CMOS) IR CUT Filter LCD, LENS	Be careful not to stained your finger. It is recommended to use wooden or plastic tweezers for manual placement. Stain is often caused by the Alcohol used in these components. Find a clean, well-ventilated place to do your work.
PCB	Use an anti-static mat as well as an anti-static wrist strap to avoid ESD damage to PCB.
CONNECTOR	The use wooden or plastic tweezers is recommended for manual placement. Metal tip tweezer might make marks or damage.
BARREL	Always follow proper direction while assembling the components of the barrel.

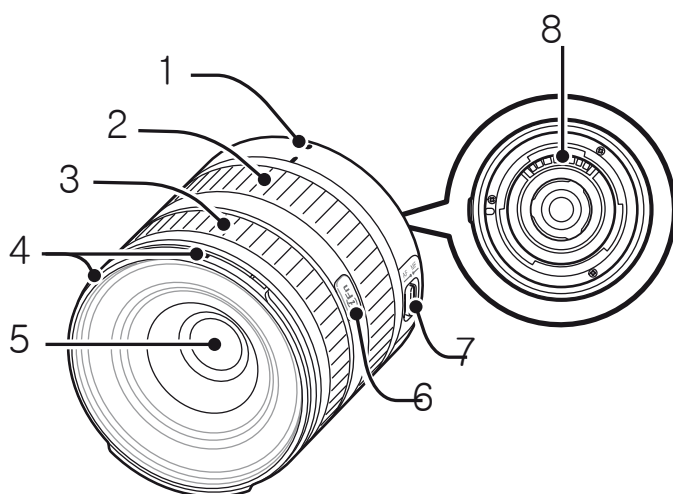
2. Product specifications

2-1 Specifications

<Table 2-1 Lens specifications>

Lens Name	SAMSUNG 12-24 mm F4-5.6 ED
Image	
Focal Length	12–24 mm (equivalent to 18.5–37 mm in 35 mm format)
Elements in Group	10 elements in 8 groups (2 aspheric lens, 1 low dispersive lens included)
Angle of View	99.0°–60.7°
Aperture	F4–5.6 (minimum: F22), (Number of Blades: 7, Circular Aperture Diaphragm)
Mount Type	Samsung NX mount
Optical Image Stabilizer	Not included
Minimum Focus Distance	0.24 m–infinity
Maximum Magnification	Approx. 0.14X
i-Scene	Supported (Backlight, Landscape, Sunset, Dawn, Beach & Snow, Night)
Lens Hood	Included
Filer Size	58 mm
Max. Diameter X Length	63.5 X 65.5 mm
Weight	Approx. 208 g (without hood)
Operating Temperature	0 - 40 °C
Operating Humidity	5 - 85 %

2-2 Layouts



1	Lens mount index
2	Zoom ring
3	Focus ring
4	Lens hood mount index
5	Lens
6	i-Function button
7	AF/MF switch
8	Lens information contacts

Fig 2-1

2-3 Accessories Information

<Table 2-2 Packing items information>

	Packing items image	Description	Parts No.
Packing items		Lens	SAMSUNG 12-24 mm F4-5.6 ED
		Lens cap	AD97-18288A
		Lens mount cover	AD63-03989A
		Hood	AD97-23028A
		Pouch	AD69-02493A
		User manual	AD68-07529A

<Table 2-3 Optional items information>

	Image	Description
Optional items		<p>Filter</p> <p>You can create different colored effects by attaching filters to your lens.</p>

3. Disassembly and reassembly

3-1 Disassembly

1. Remove the 6 screws.

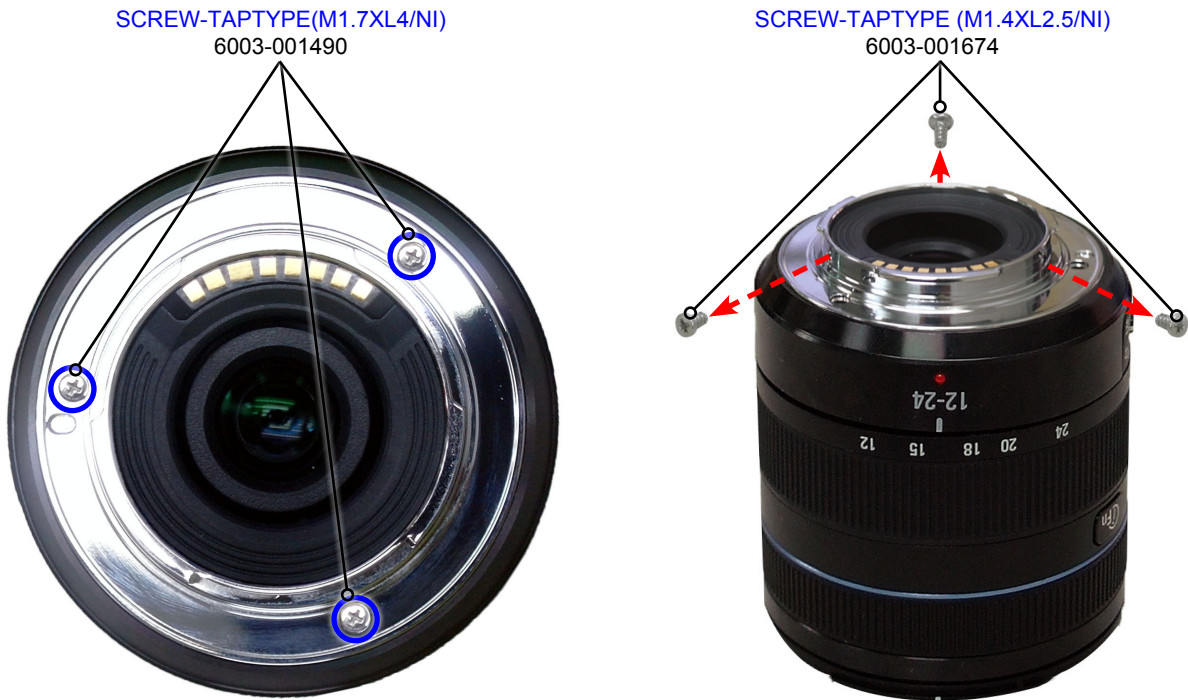


Fig. 3-1

2. Remove the **ASSY BARREL-MOUNT_COVER**.



Fig. 3-2

3. Remove the **2 screws**.



Fig. 3-3

4. Remove the **MOUNT-LENS**.



Fig. 3-4

5. Remove the **AF/MF Switch FPCB** as illustrated in Fig. A.

CAUTION

Refer to explanation of each FPCB name and damage symptoms as illustrated in Fig 3-7. Use care not to damage switch part when removing the AF/MF Switch FPCB.

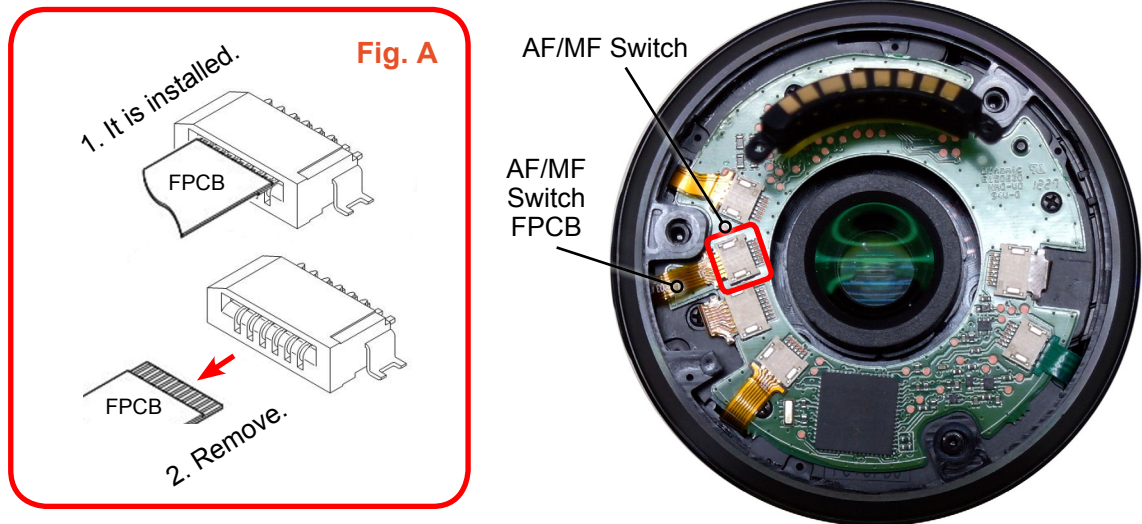


Fig. 3-5

6. Remove the **ASSY BARREL-MAIN_XL1203**.



Fig. 3-6

7. Remove the **6 FPCBs** as illustrated in Fig. B.
8. Remove the **3 screws**.

CAUTION

Explanation of each FPCB name and damage symptoms

- ① **Contact FPCB damage**
Error message saying "No Lens found." (F->symptoms)
- ② **iFn FPCB damage**
i-Fn switch doesn't work.
- ③ **AF Motor FPCB damage**
AF Motor doesn't work.
- ④ **MF PI FPCB damage**
MF and i-Fn doesn't work.
- ⑤ **Zoom Encoder FPCB damage**
Error message saying "Zoom in to that location is not found."
- ⑥ **IRIS FPCB damage**
IRIS doesn't work.

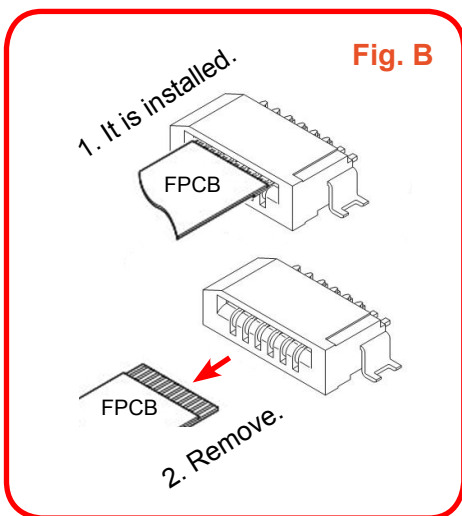


Fig. 3-7

9. Remove the **ASSY PCB MAIN-ASSY_XL1203_MAIN_PCB**.



Fig. 3-8

10. Remove the **3 screws**.



Fig. 3-9

11. Remove the **2 screws** and **2 SHAFT-ZOOMING ROLLERS**.

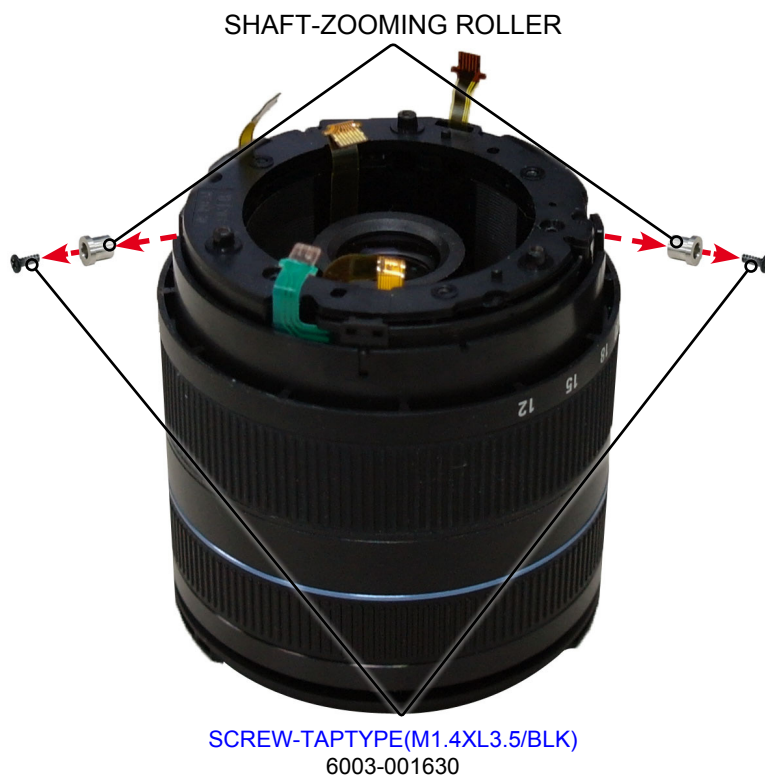


Fig. 3-10

12. Remove the **ASS'Y FOCUS RING**.



Fig. 3-11

13. Remove the **ASSY BARREL-CAM_XL1203** and **BARREL_FILTER_XL1203**.



Fig. 3-12

14. Remove the **3 screws** and **3 SHAFT-COLLAR_CAM_XL1203s**.

SCREW-TAPTYPE(M1.4XL3.5/BLK)
6003-001630

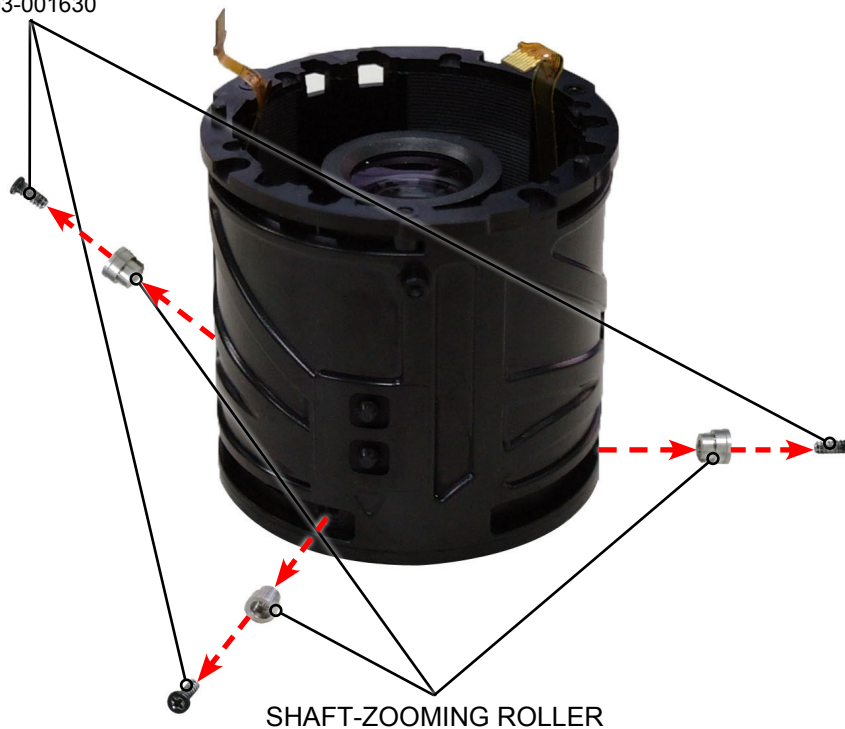


Fig. 3-13

15. Turn the part fully clockwise as illustrated in Fig. C and remove the **BARREL-CAM**.

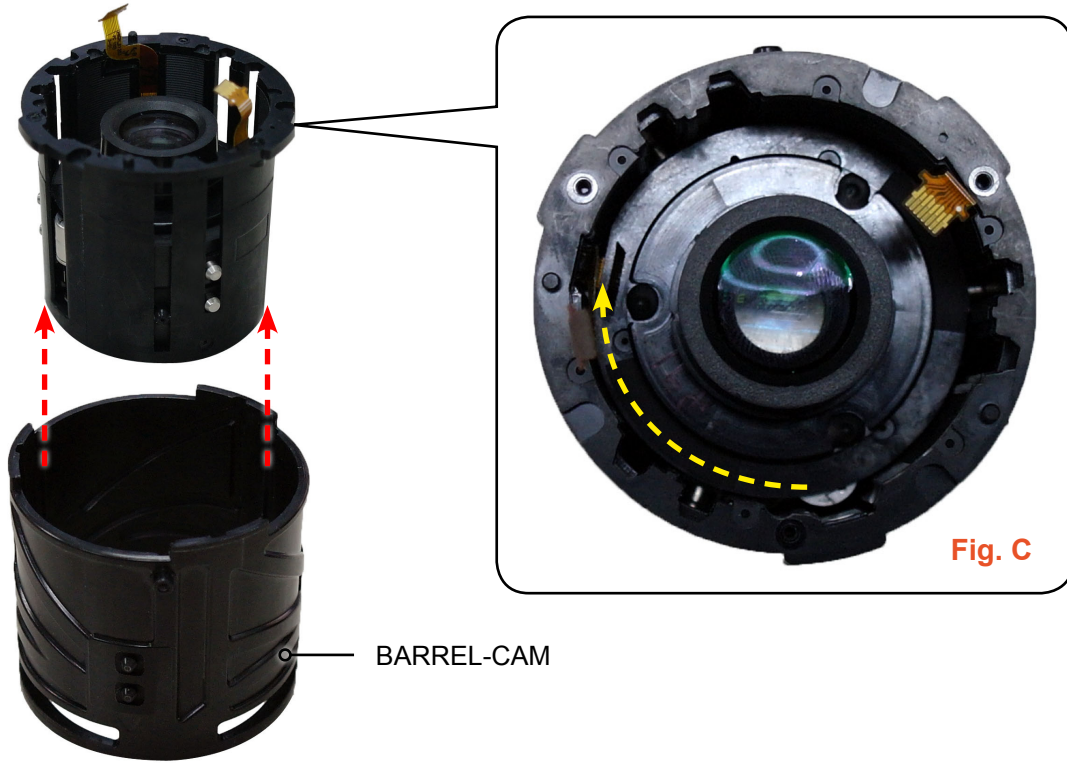


Fig. 3-14

16. Remove the **FPCB** that is held on with double-sided tape inside of **BARREL-GUIDE** as illustrated in Fig. D.

17. Remove the **ASSY BARREL-4TH_XL1203**.

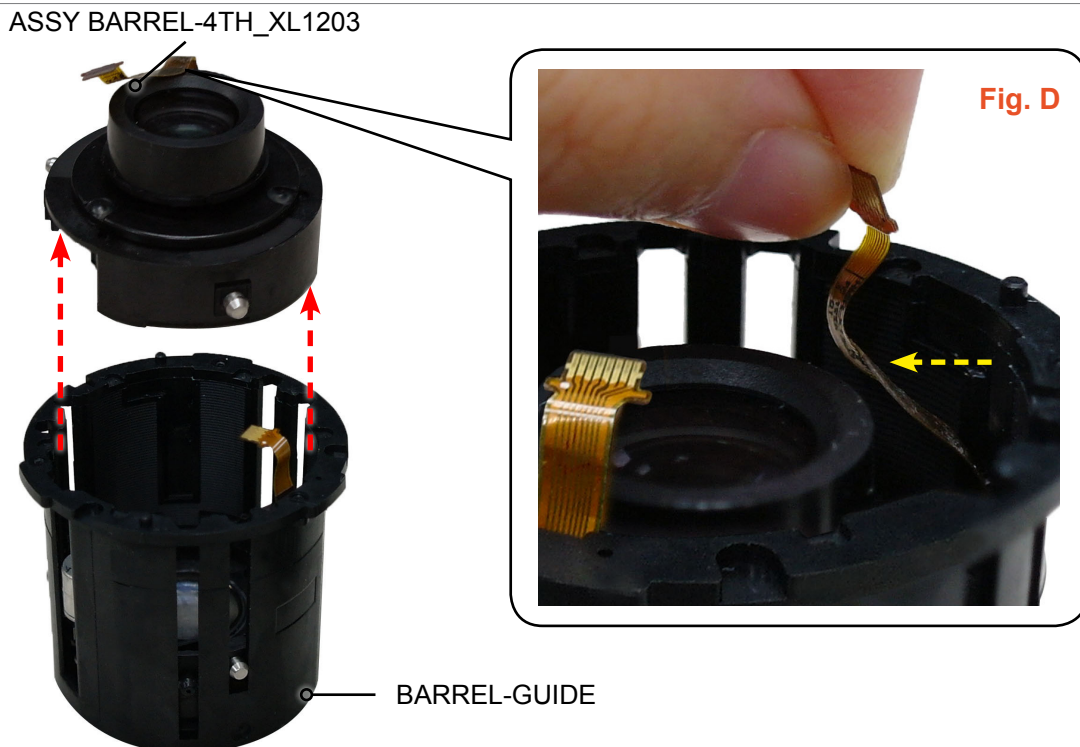


Fig. 3-15

18. Remove the **FPCB** that is held on with double-sided tape inside of **BARREL-GUIDE** as illustrated in **Fig. E**.
19. Remove the **ASSY BARREL-3RD MOVER**.

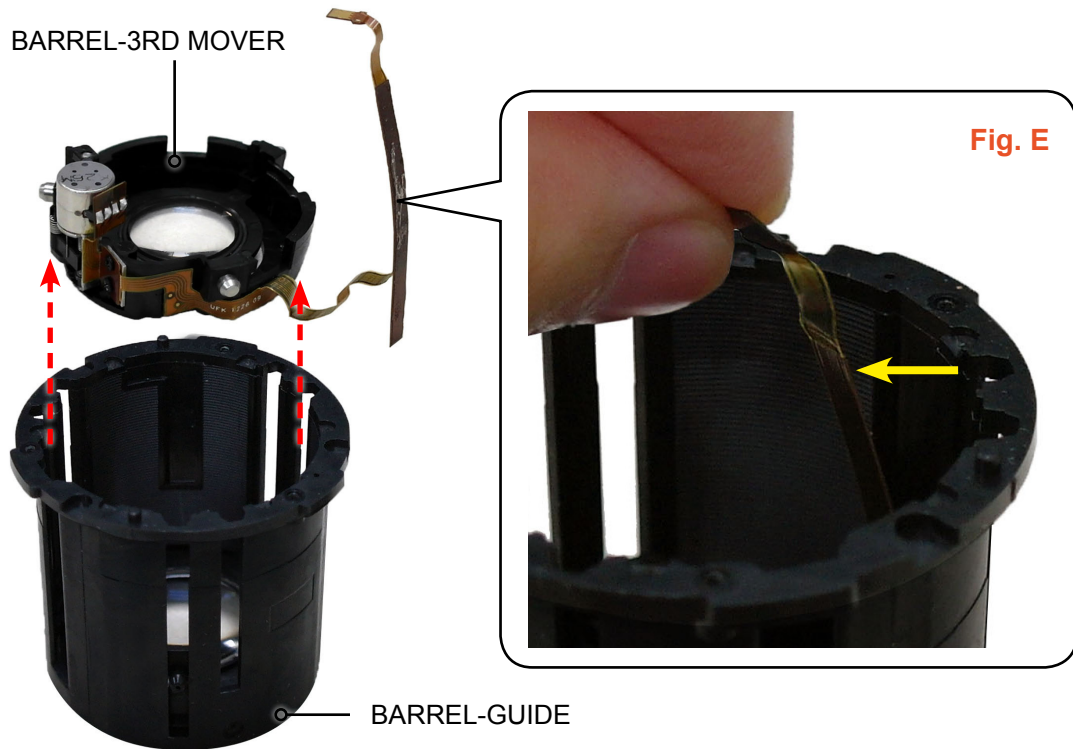


Fig. 3-16

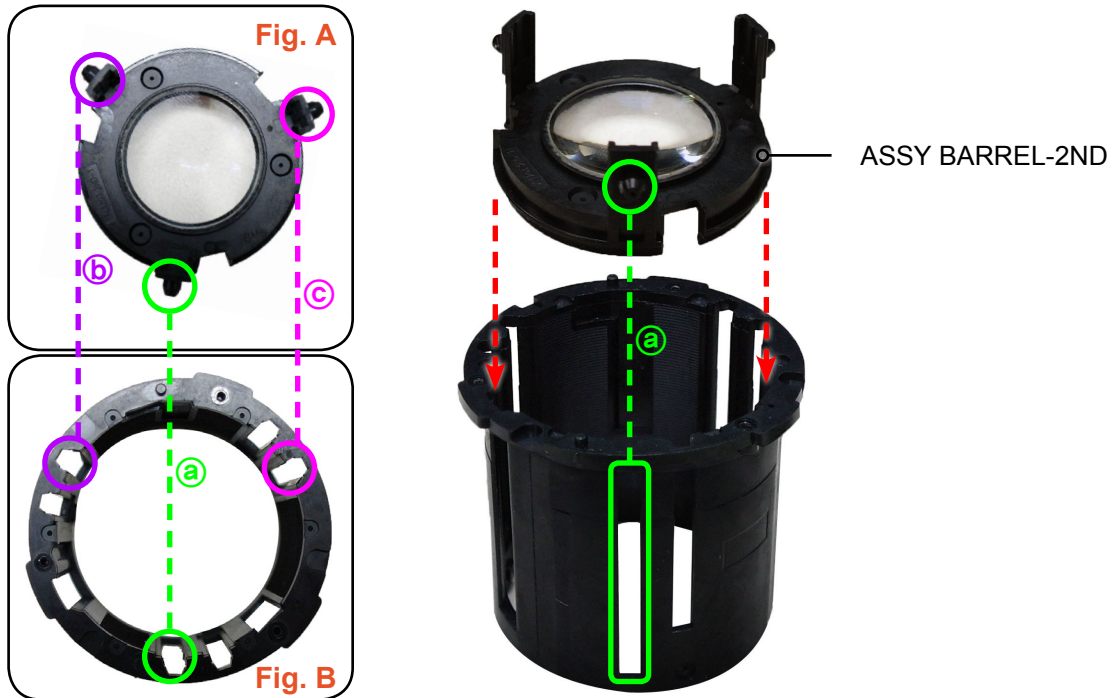
20. Remove the **ASSY BARREL-2ND**.



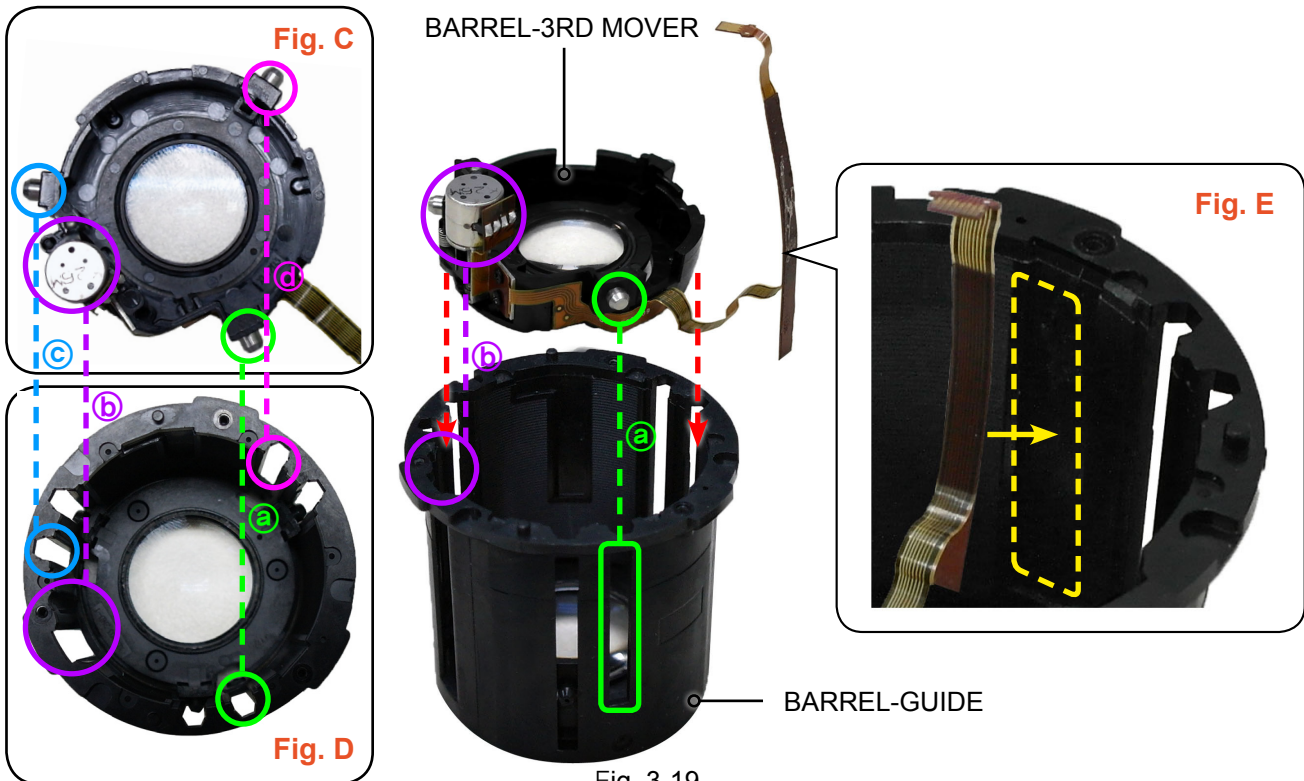
Fig. 3-17

3-2 Reassembly

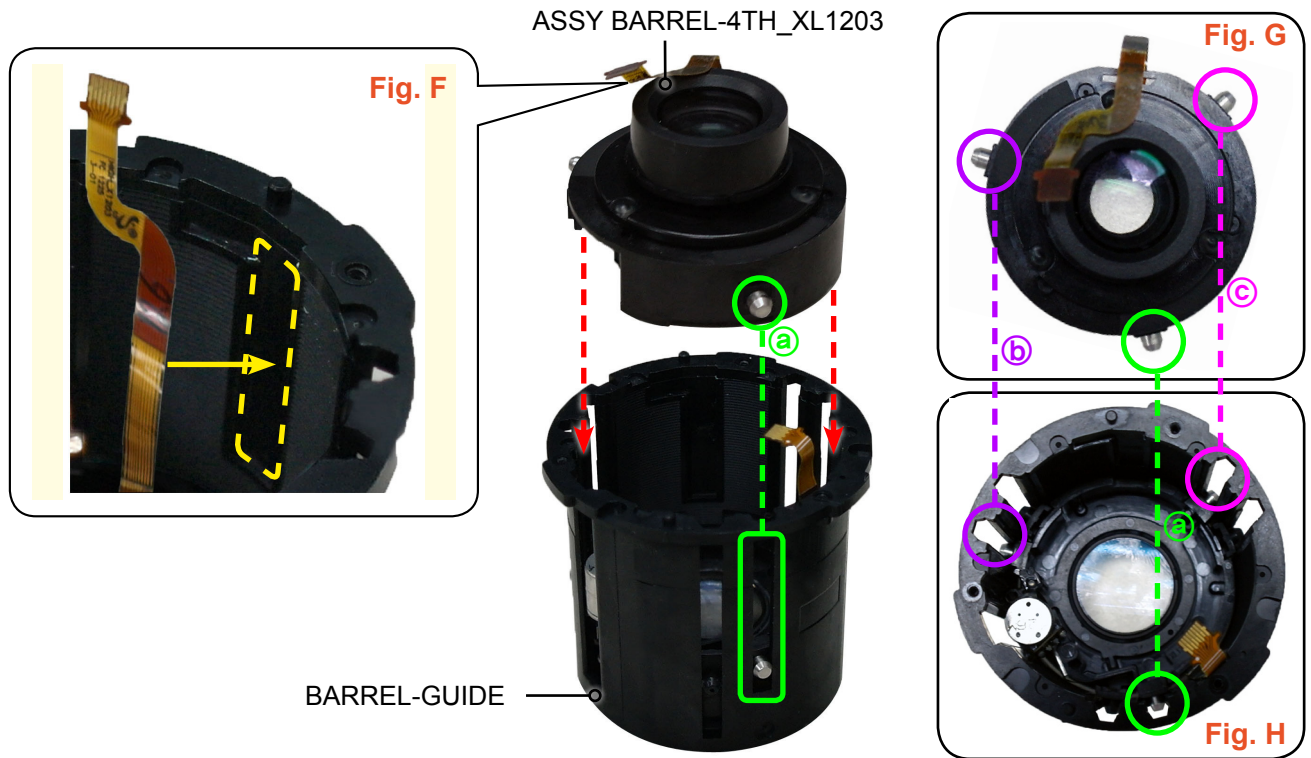
- Align the parts made by (a), (b) and (c) respectively as illustrated in Fig. A and B. Then install the **ASSY BARREL-2ND**.



- Align the parts made by (a), (b), (c) and (d) respectively as illustrated in Fig. C and D. Then install the **ASSY BARREL-3RD MOVER**.
- Attach the **FPCB** inside of **BARREL-GUIDE** as illustrated in Fig. E.



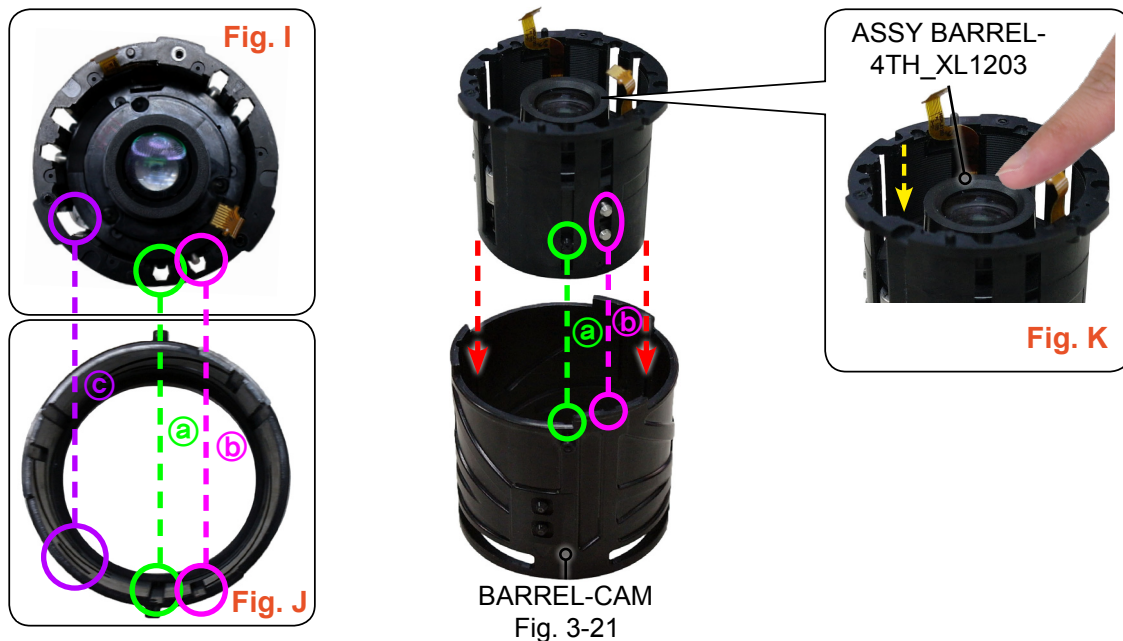
- Attach the **FPCB** inside of the **BARREL-GUIDE** as illustrated in **Fig. F**.
- Align the parts made by **(a)**, **(b)** and **(c)** respectively as illustrated in **Fig. G** and **H**.
Then install the **ASSY BARREL-4TH_XL1203**.



- Align the parts made by **(a)**, **(b)** and **(c)** respectively as illustrated in **Fig. I** and **J**.
- Install the **BARREL-CAM** while pressing and holding down the **ASSY BARREL-4TH_XL1203** with hand as illustrated in **Fig. K**.

CAUTION

Please make sure to press and hold down the ASSY BARREL-4TH_XL1203 when installing the BARREL-CAM because it may cause the deformation or defect of FPCB.



8. Lift up the **BARREL-GUIDE** and then pull down it as illustrated in **Fig. L**.
9. Pull up the **ASSY BARREL-4TH_XL1203** as much as possible as illustrated in **Fig. M**.
Pull down the **ASSY BARREL-2ND** as much as possible as illustrated in **Fig. N**.

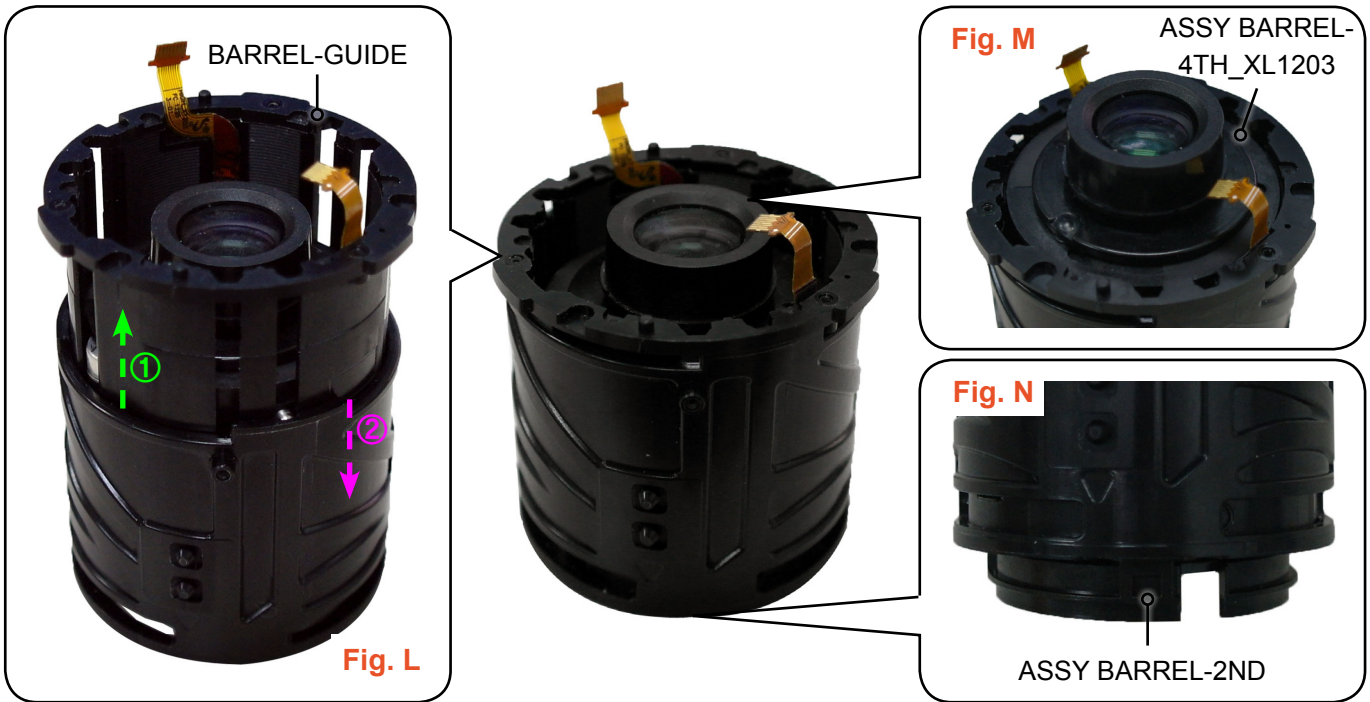


Fig. 3-22

10. Turn the **BARREL-CAM** fully counter-clockwise as illustrated in **Fig. O**.

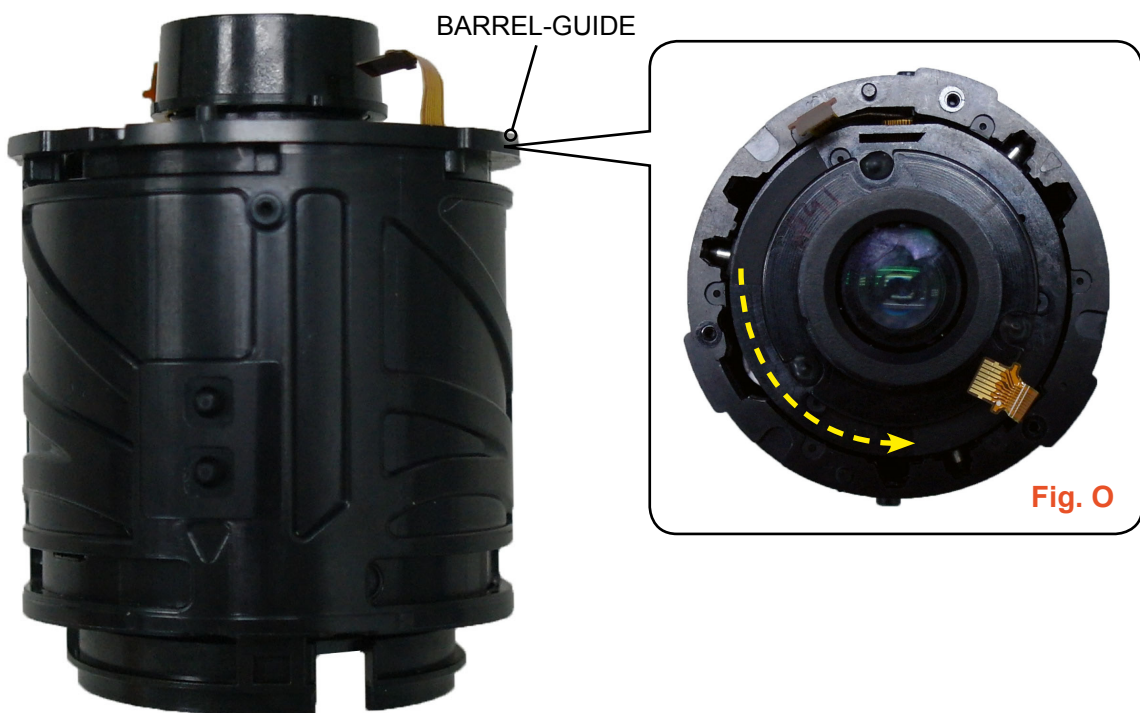
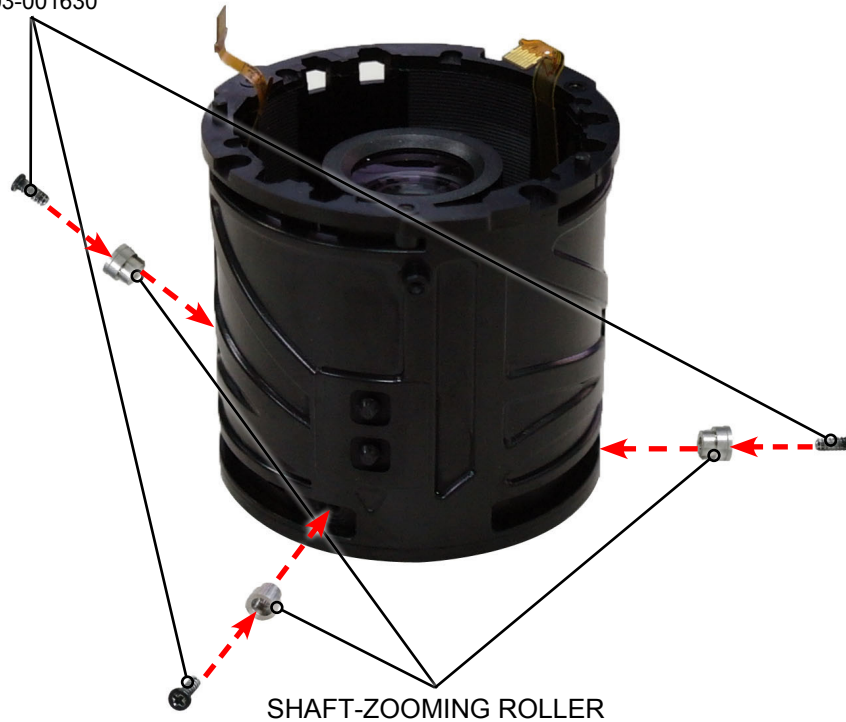


Fig. 3-23

11. Tighten the **3 screws** and install the **3 SHAFT-COLLAR_CAM_XL1203s**.

SCREW-TATYPE(M1.4XL3.5/BLK)
6003-001630



SHAFT-ZOOMING ROLLER

Fig. 3-24

12. Align the parts made by **a** and **b** respectively as illustrated in Fig. P and Q.
Install the **ASSY BARREL-CAM_XL1203** and **BARREL_FILTER_XL1203**.

CAUTION

Be sure to align the part made by Point before installing.

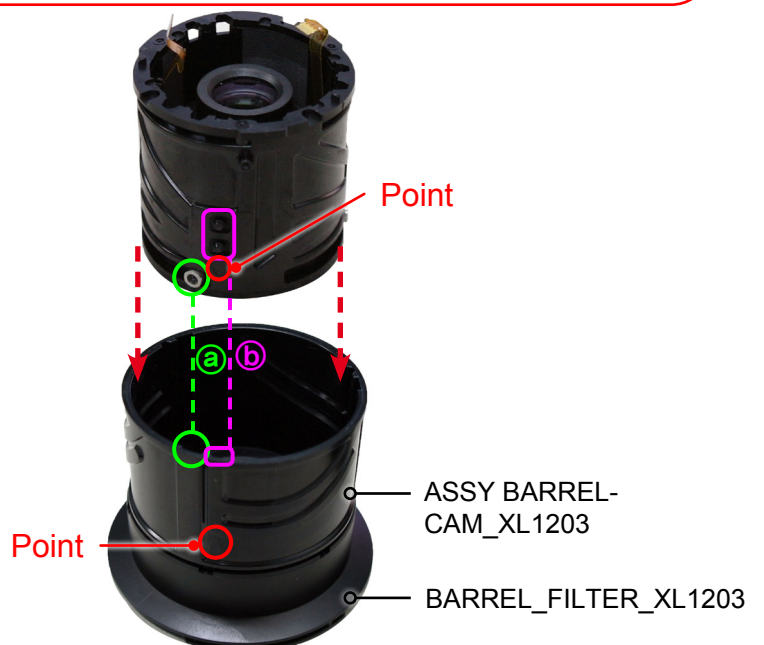
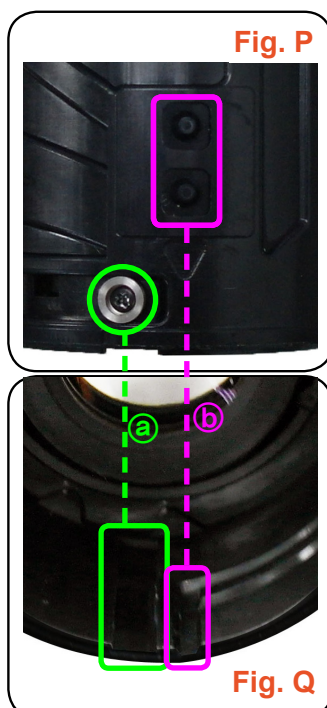


Fig. 3-25

13. Align the parts made by (a), (b), (c), (d), (e) and (f) as illustrated in Fig. R, S, T and U. Then install the **ASS'Y FOCUS RING**.

CAUTION

Be sure to align the part made by **Point** before installing.

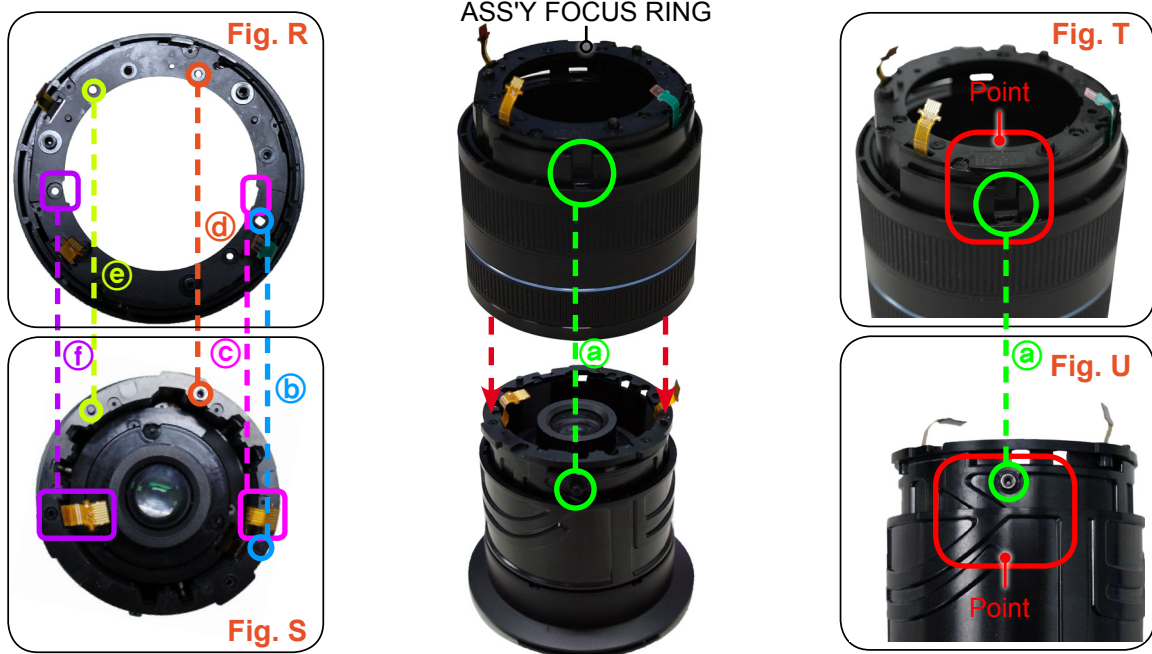
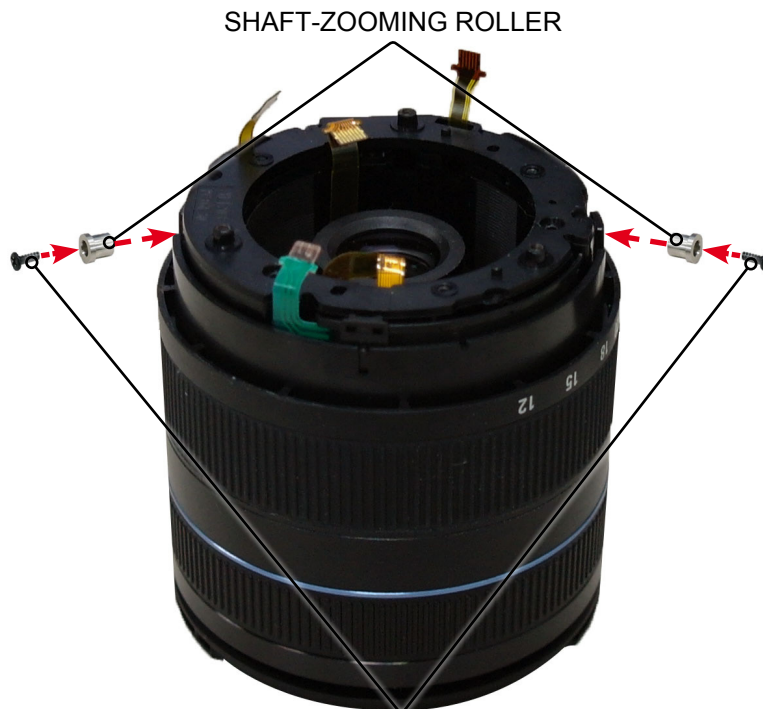


Fig. 3-26

14. Tighten the 2 screws and 2 **SHAFT-ZOOMING ROLLERS**.



SCREW-TATYPE(M1.4XL3.5/BLK)
6003-001630

Fig. 3-27

15. Tighten the **3 screws**.

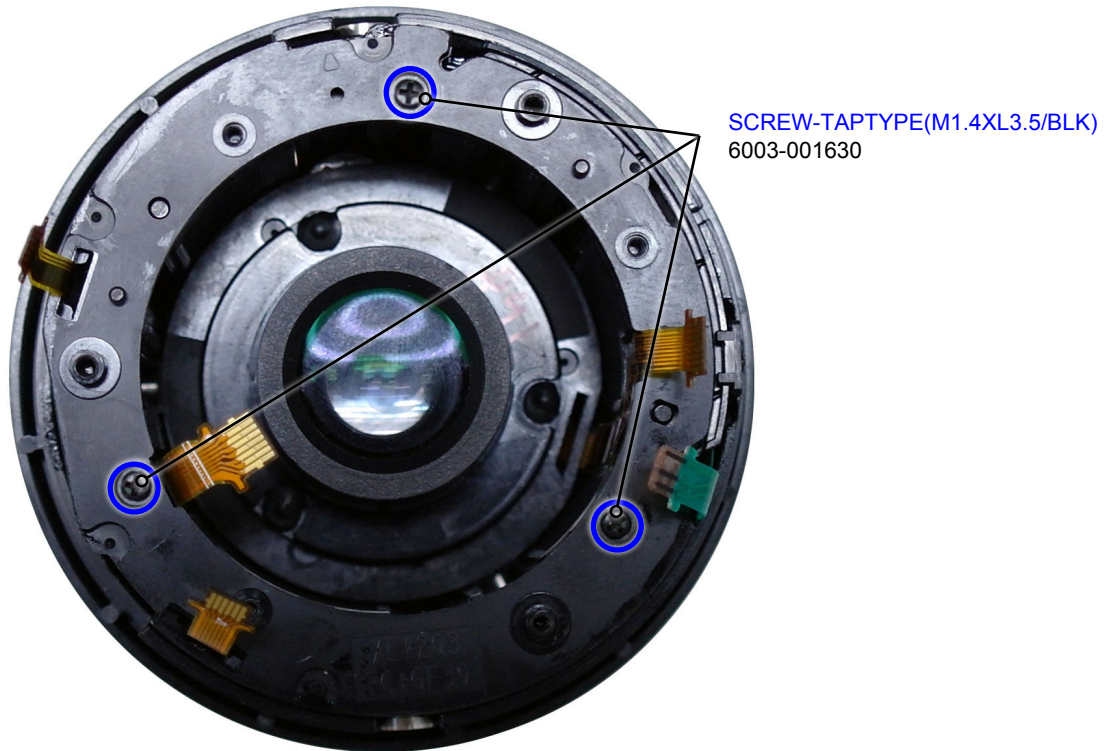


Fig. 3-28

16. Install the **ASSY PCB MAIN-ASSY_XL1203_MAIN_PCB**.



Fig. 3-29

17. Connect the **6 FPCBs** as illustrated in Fig. V.
18. Tighten the **3 screws**.

CAUTION

Explanation of each FPCB name and damage symptoms

- ① **Contact FPCB damage**
Error message saying "No Lens found." (F->symptoms)
- ② **iFn FPCB damage**
i-Fn switch doesn't work.
- ③ **AF Motor FPCB damage**
AF Motor doesn't work.
- ④ **MF PI FPCB damage**
MF and i-Fn doesn't work.
- ⑤ **Zoom Encoder FPCB damage**
Error message saying "Zoom in to that location is not found."
- ⑥ **IRIS FPCB damage**
IRIS doesn't work.

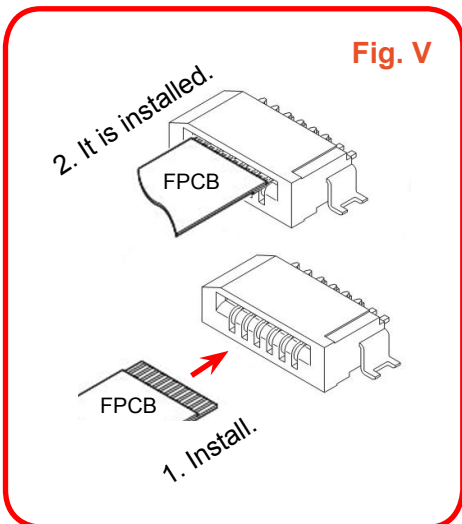


Fig. 3-30

19. Install the **ASSY BARREL-MAIN_XL1203**.



Fig. 3-31

20. Connect the **AF/MF Switch FPCB** as illustrated in Fig. W.

CAUTION

Refer to explanation of each FPCB name and damage symptoms as illustrated in Fig 3-30. Use care not to damage switch part when installing the AF/MF Switch FPCB.

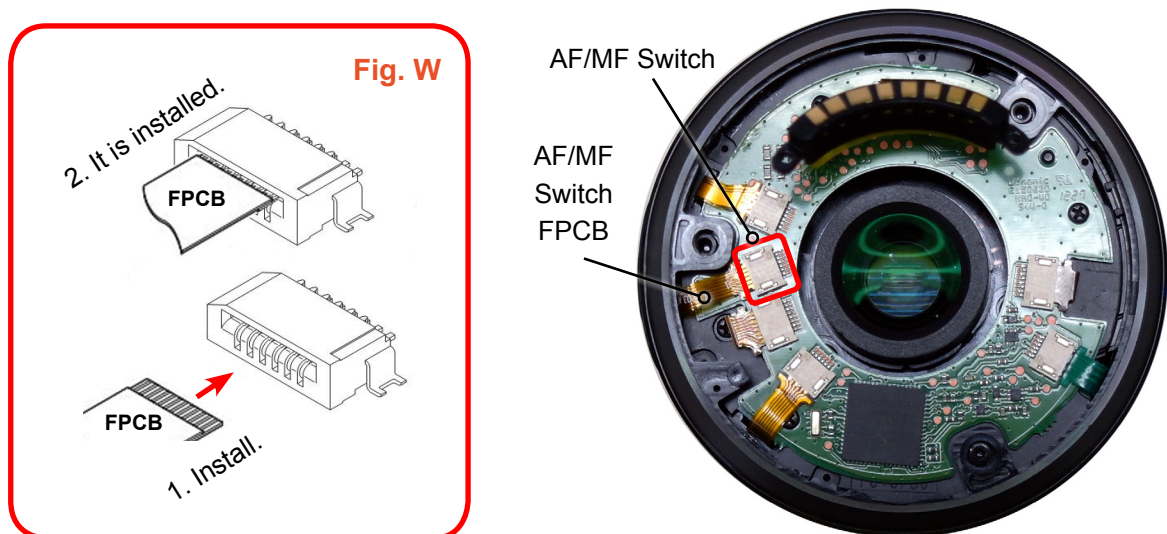


Fig. 3-32

21. Install the **MOUNT-LENS**.



Fig. 3-33

22. Tighten the **2 screws**.



Fig. 3-34

23. Install the **ASSY BARREL-MOUNT_COVER**.



Fig. 3-35

24. Tighten the **6 screws**.

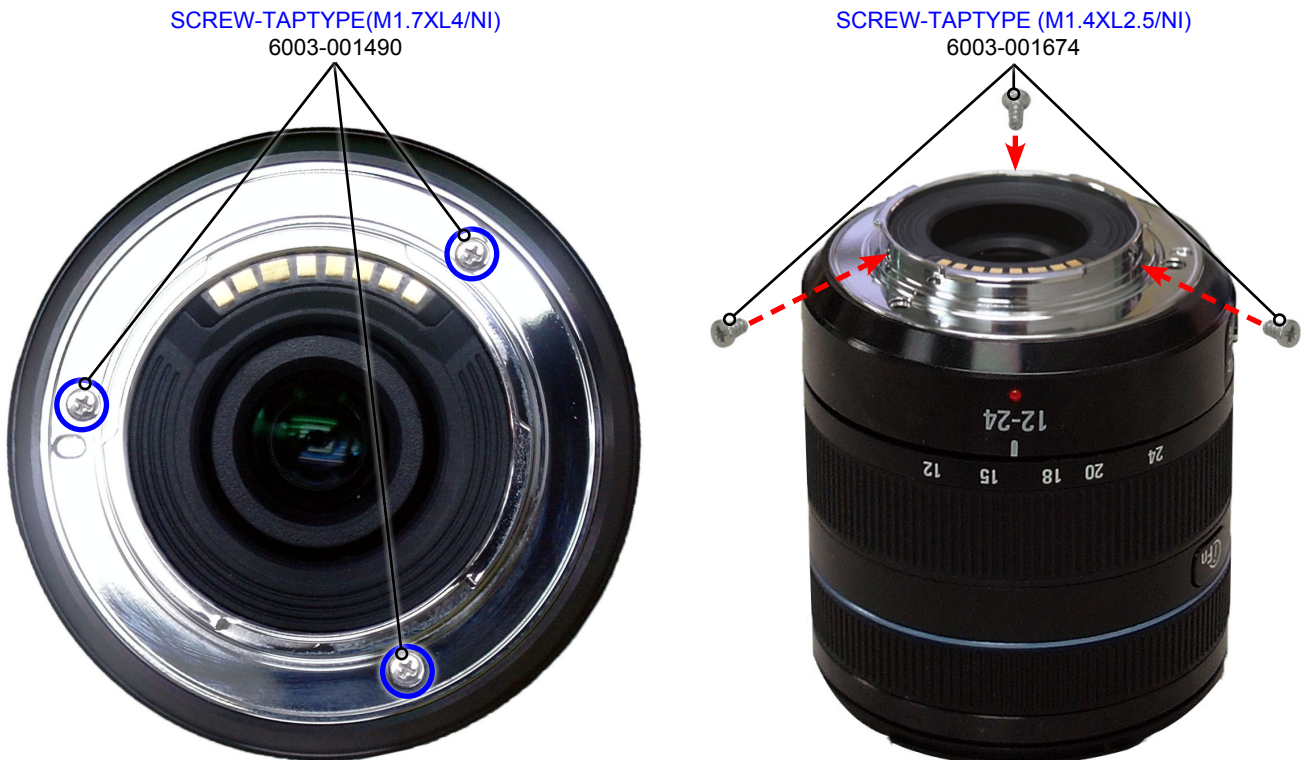
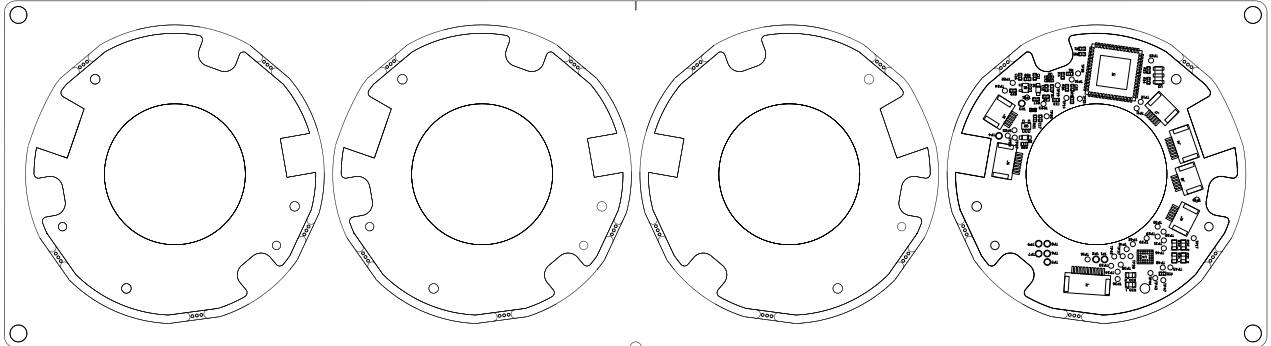


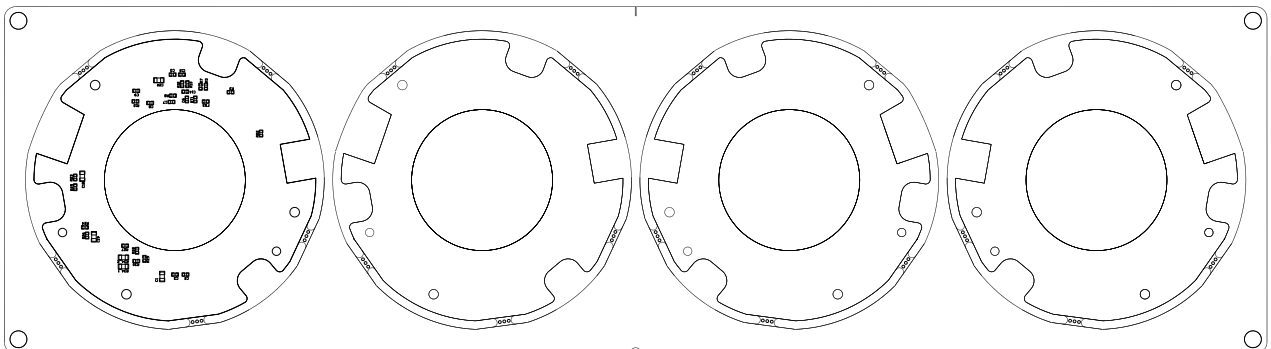
Fig. 3-36

4. PCB Diagram

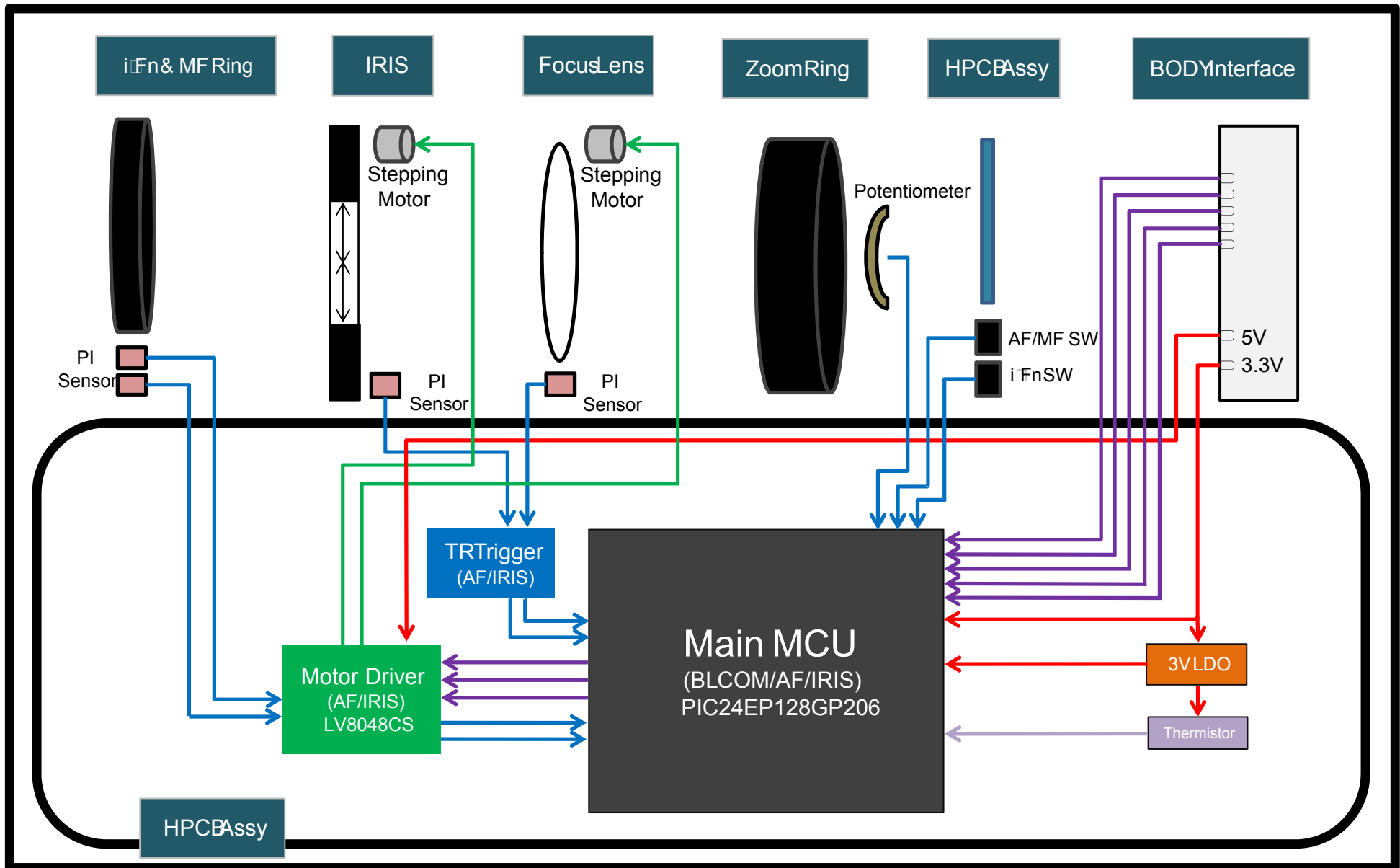
4-1 Main PCB (Top)



4-2 Main PCB (Bottom)



5. Block Diagram



6. Firmware update

6-1 Before updating the firmware

1. Make sure you use fully charged batteries. It is recommended that you use an AC adaptor for camera that have an AC adaptor.
If fully charged batteries are not used, or the power is cut during a firmware update, the lens may be seriously damaged, resulting in lens malfunction.
2. Before updating the lens firmware, make sure that you format the memory card on your PC or camera and then download the necessary firmware file. Since the memory card may not be suitable for lens firmware update, depending on the model, check before you proceed with updating the lens firmware.
3. Download the lens firmware file into the root directory of the memory card. Also check that the lens firmware file downloaded has the correct file name for the camera's lens.
4. To update lens firmware there should be sufficient free space on the memory card for the size of the lens firmware file. If the lens firmware update is not completed because of insufficient memory space, delete some of the files saved on the memory to secure more free space and then try again.
5. Do not operate the camera, remove the batteries, or cut the power while updating lens firmware. Operate the camera only after the lens firmware update is complete.
6. Once the lens firmware is updated, it is not possible to restore the earlier version of the lens firmware. When the lens firmware is updated, all the camera settings are set to their default values. Since all the files stored in the internal memory will be deleted, ensure that files are copied to other storage devices before updating the lens firmware.

6-2 How to update the firmware

If the batteries are completely discharged during the lens firmware update, camera or lens malfunction may occur. Make sure to use fully charged batteries for safety. Ensure that you format the memory card before using it, and then save the lens firmware file on the formatted memory card.

1. Download the lens firmware file into the root directory of the memory card.
 - * When you update the lens firmware, the lens which you update must be attached on the camera.
 - If you can not attach the lens to the camera, you can not update it.
 - * The file name of lens firmware is "lens.bin"
 - If there is a difference between attached lens and lens firmware file, "File Error" message will be displayed.
2. Insert the memory card into the camera and then turn on the camera.
3. 1) Press the menu button.
 2) Move to "Setup Menu 3" by pressing the 4-Way direction button.
 3) Select the "Firmware Update" by pressing the 4-Way direction button.
 4) Press the "OK" button.

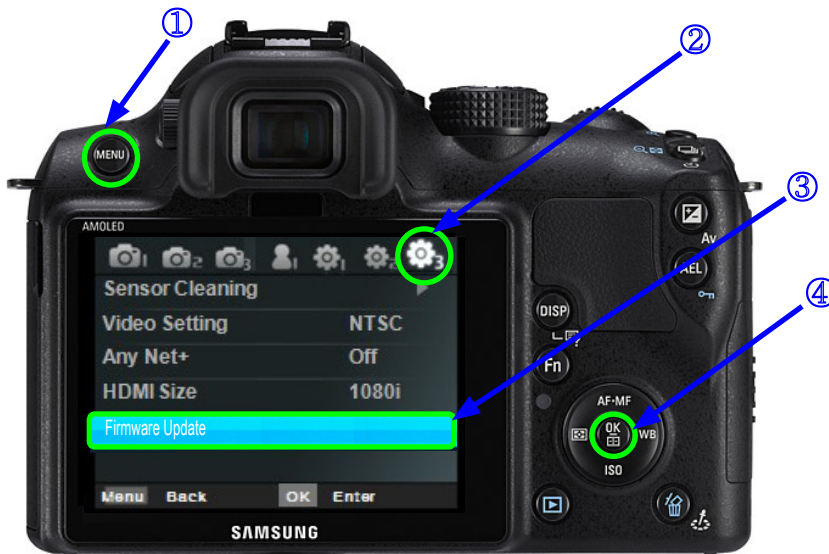


Fig. 6-1

4. 1) Select the "Lens Firmware" by pressing the 4-Way direction button.
 2) Press the "OK" button.



Fig. 6-2

- 5. 1) Select the "Yes" by pressing the 4-Way direction button.
- 2) Press the "OK"



Fig. 6-3

- 6. The progress bar of the Firmware update will be displayed on the LCD and the update will proceed. It takes about 2 to 3 minutes to complete.

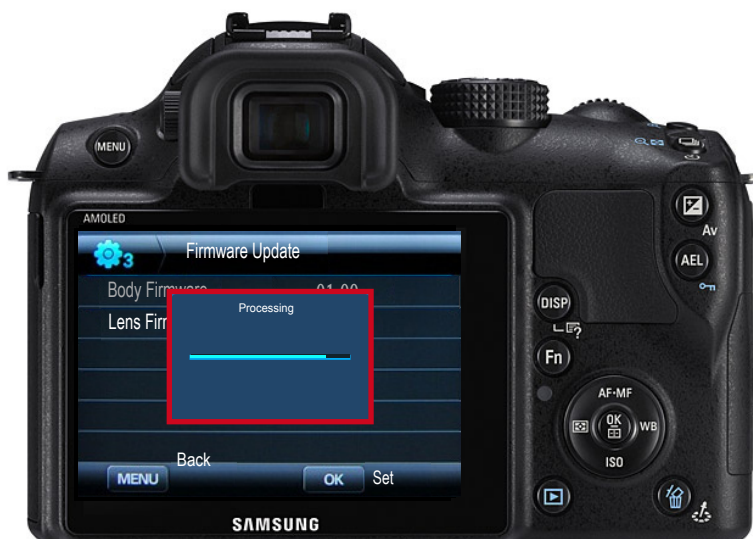


Fig. 6-4

- 7. After completing the firmware update, "Update Completed" message will be displayed.

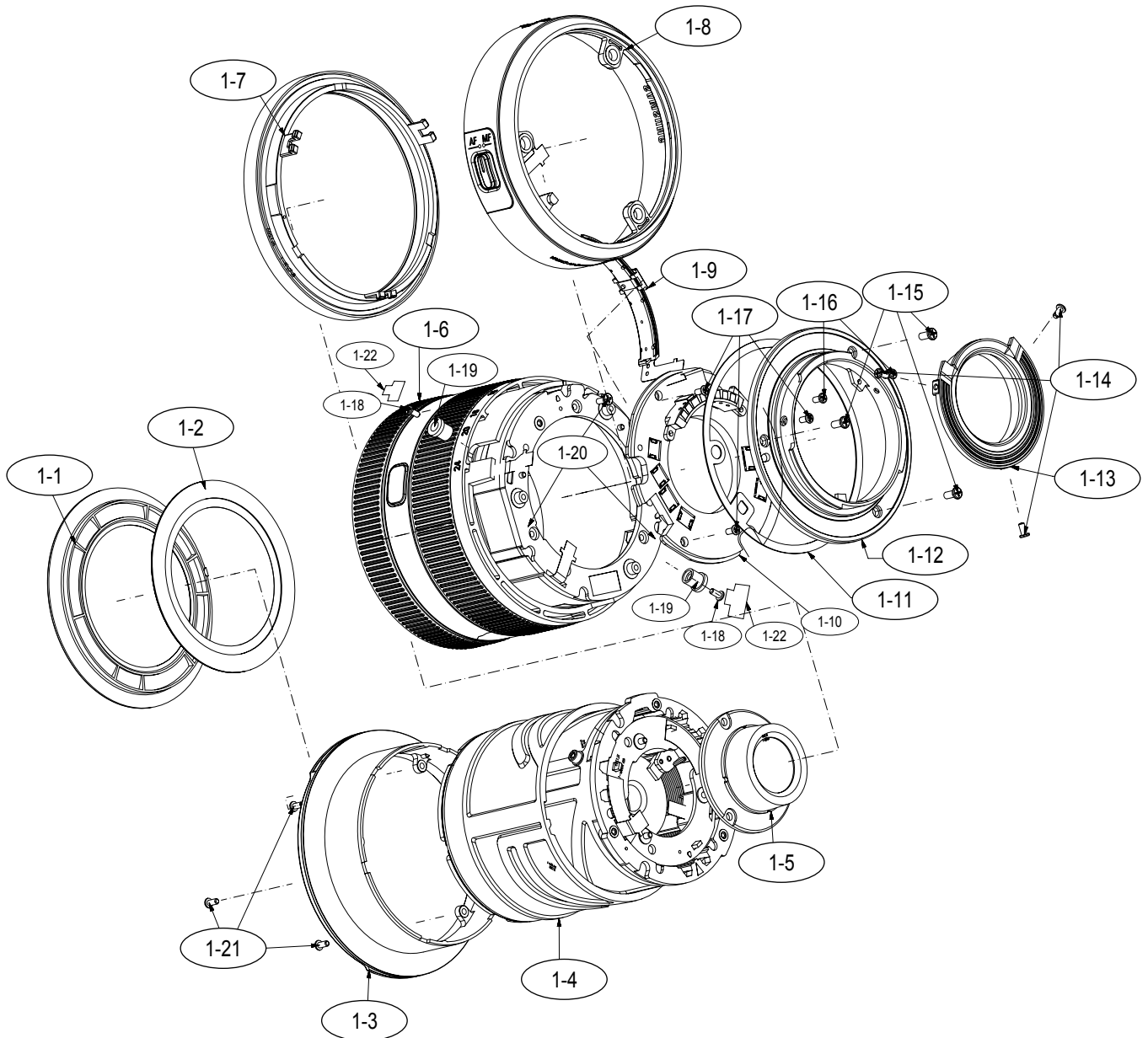


Fig. 6-5

7. Exploded view and parts list

7-1 ASS'Y TOTAL

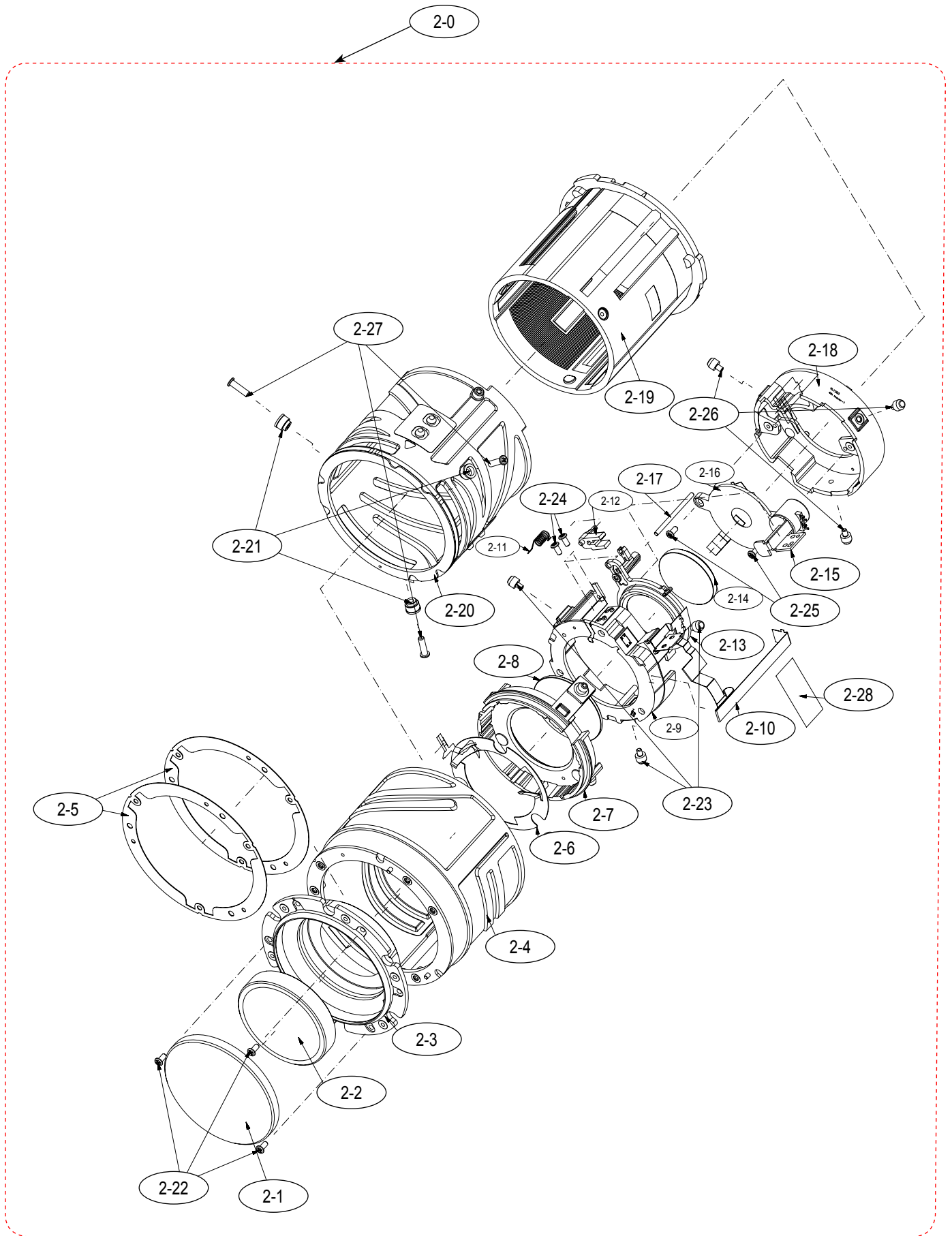
Parts Service Information	Availability
SA	Service is available.
SNA	Service is not available.



Exploded View and Parts List

Loc. No.	Parts No.	Description	QTY	Available	Remark
1-1	AD97-23082A	ASSY BARREL-FRONT_COVER	1	SA	
1-2	AD63-07188A	SHIELD_1ST_MOVER_XL1203	1	SNA	
1-3	AD67-02499A	BARREL_FILTER_XL1203	1	SA	
1-4	AD97-22998A	ASSY BARREL-CAM_XL1203	1	SA	
1-5	AD97-22997A	ASSY BARREL-4TH_XL1203	1	SA	
1-6	AD97-22983A	ASSY BARREL-FOCUS RING_XL1203	1	SA	
1-7	AD97-22984A	ASSY BARREL-OUTER RING_XL1203	1	SA	
1-8	AD97-22982A	ASSY BARREL-MAIN_XL1203	1	SA	
1-9	3408-00117	SWITCH-SLIDE	1	SA	
1-10	AD92-01950A	ASSY PCB MAIN-ASSY_XL1203_MAIN_PCB	1	SA	
1-11	AD63-07150A	SHEET-WASHER_MOUNT 0.05	2	SA	
	AD63-07151A	SHEET-WASHER_MOUNT 0.1	2	SA	
	AD63-07152A	SHEET-WASHER_MOUNT 0.3	2	SA	
1-12	AD61-04237B	MOUNT-LENS	1	SA	
1-13	AD97-23081A	ASSY BARREL-MOUNT_COVER	1	SA	
1-14	6003-001674	SCREW-TAPTYPE(M1.4XL2.5/NI)	3	SA	
1-15	6003-001490	SCREW-TAPTYPE(M1.7XL4/NI)	3	SA	
1-16	6001-002181	SCREW-MACHINE(M1.4XL2.5/BLK)	2	SA	
1-17	6003-001630	SCREW-TAPTYPE(M1.4XL3.5/BLK)	3	SA	
1-18	6003-001630	SCREW-TAPTYPE(M1.4XL3.5/BLK)	2	SA	
1-19	AD66-00732A	SHAFT-ZOOMING ROLLER	2	SA	
1-20	6003-001630	SCREW-TAPTYPE(M1.4XL3.5/BLK)	3	SNA	
1-21	6003-001659	SCREW-TAPTYPE(M1.4XL4/BLK)	3	SNA	
1-22	AD63-07139A	SHEET-ZOOM ROLLER_MASK	2	SNA	

7-2 ASS'Y BARREL CAM

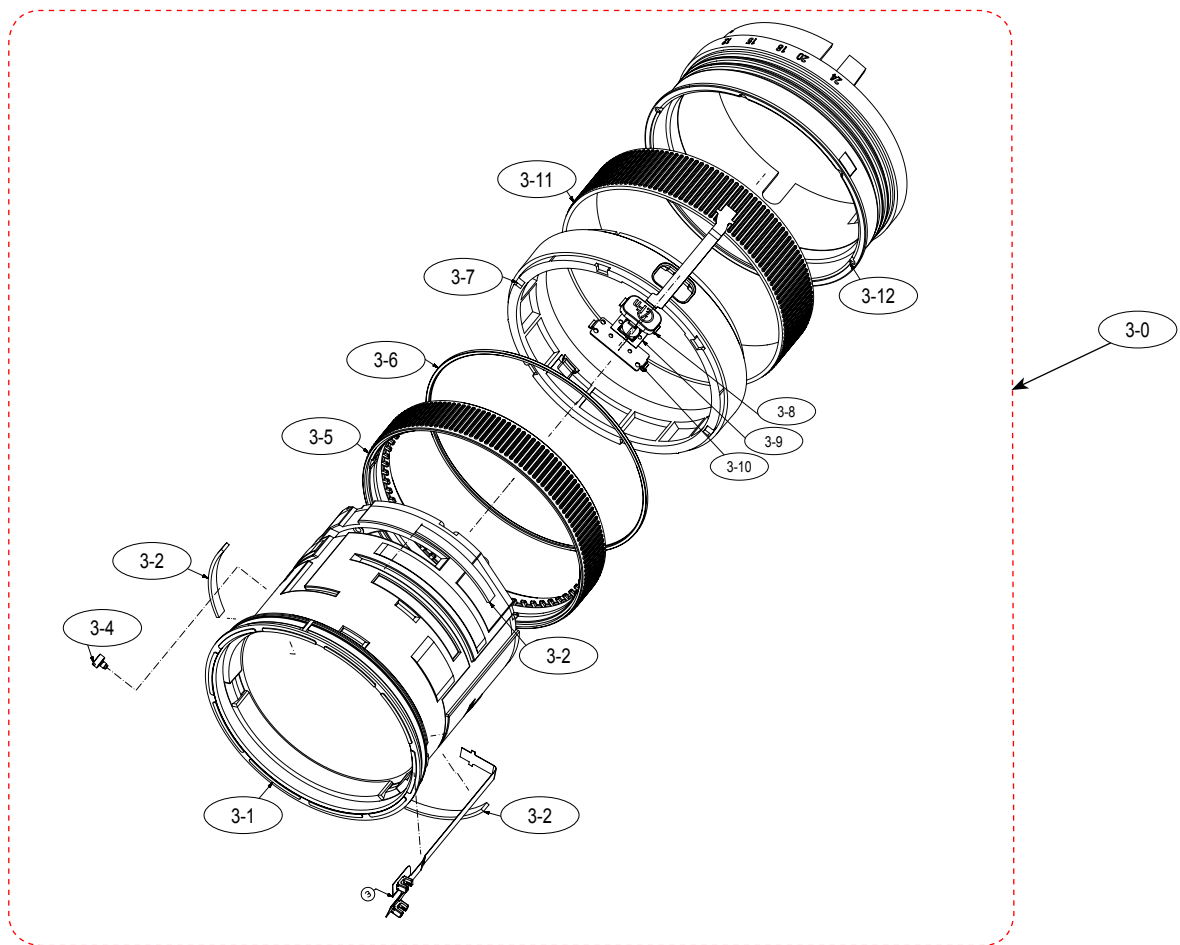


Exploded View and Parts List

Loc. No.	Description	QTY	Available	Remark
2-0	ASSY BARREL CAM	1	SA	

Loc. No.	Parts No.	Description	QTY	Available	Remark
2-1	AD67-02491A	LENS SP LENS-G1	1	SNA	
2-2	AD97-22263A	ASSY LENS ASP-G2	1	SNA	
2-3	AD67-02497A	BARREL-1ST	1	SNA	
2-4	AD67-02498A	BARREL-1ST MOTOR	1	SNA	
2-5	AD63-06979A	SHEET-WAHER_1ST_ADJUST-05_XL1203	3	SNA	
	AD63-06980A	SHEET-WAHER_1ST_ADJUST-10_XL1203		SNA	
2-6	AD61-05783A	PLATE-WAVE SPRING	1	SNA	
2-7	AD67-02500A	BARREL-2ND	1	SNA	
2-8	AD67-02484A	LENS SP LENS-G3	1	SNA	
2-9	AD67-02502A	BARREL-3RD MOVER	1	SNA	
2-10	AD94-00452A	ASSY SMD INSERT-XL1203_AF_MOTOR_FPCB_SMD	1	SNA	
2-11	AD61-05737A	SPRING ETC-AF_CLIP_XL1203	1	SNA	
2-12	AD61-05700A	CLIP-AF	1	SNA	
2-13	AD67-02501A	BARREL-3RD MOVER	1	SNA	
2-14	AD97-22289A	ASSY LENS-G4G5	1	SNA	
2-15	AD97-22802A	ASSY MOTOR-XL1203_AF_MOTOR	1	SNA	
2-16	AD97-22464A	ASSY IRIS	1	SNA	
2-17	AD66-01029A	SHAFT-AF_XL1203	1	SNA	
2-18	AD67-02504A	BARREL-4TH MOVER	1	SNA	
2-19	AD67-02507A	BARREL-GUIDE	1	SNA	
2-20	AD67-02506A	BARREL-CAM	1	SNA	
2-21	AD66-01032A	SHAFT-COLLAR_CAM_XL1203	3	SNA	
2-22	6003-001659	SCREW-TAPTYPE(M1.4XL4/BLK)	3	SNA	
2-23	AD66-01031A	SHAFT-MOVE_PIN_XL1203	3	SNA	
2-24	6003-001630	SCREW-TAPTYPE(M1.4XL3.5/BLK)	2	SNA	
2-25	6003-001630	SCREW-TAPTYPE(M1.4XL3.5/BLK)	2	SNA	
2-26	AD66-01031A	SHAFT-MOVE_PIN_XL1203	3	SNA	
2-27	6003-001659	SCREW-TAPTYPE(M1.4XL4/BLK)	3	SNA	
2-28	AD63-07190A	SHEET-MOTOR FPCB	1	SNA	

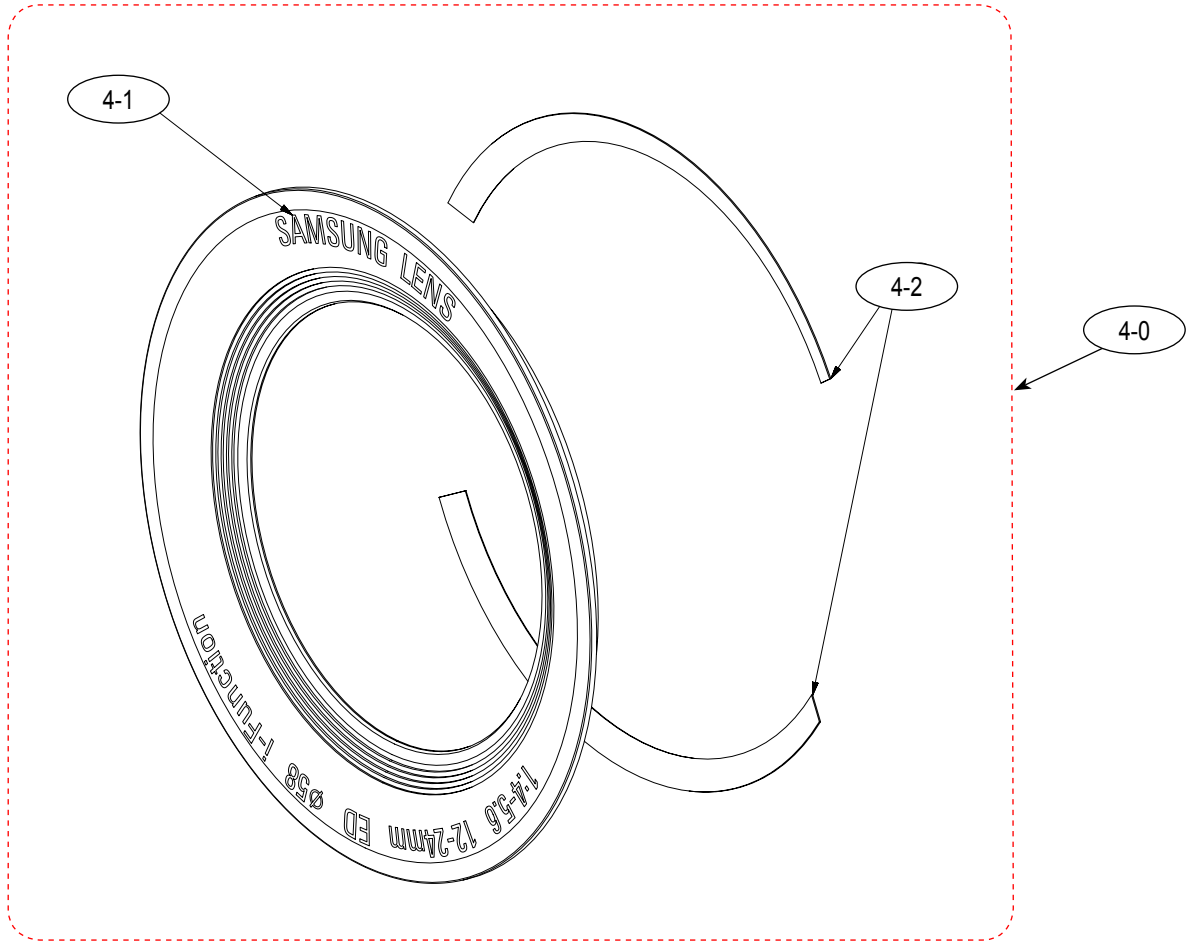
7-3 ASSY FOCUS RING



Loc. No.	Description	QTY	Available	Remark
3-0	ASSY FOCUS RING	1	SA	

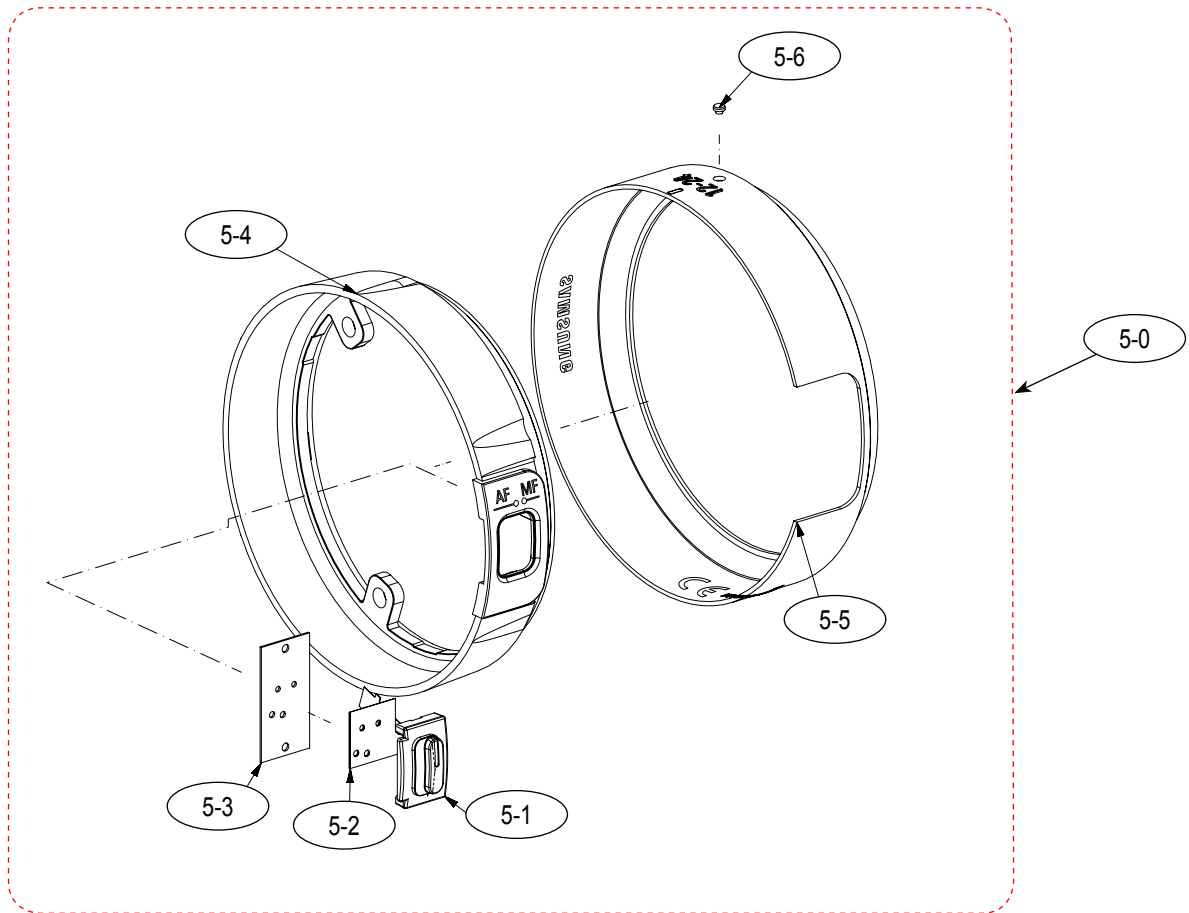
Loc. No.	Parts No.	Description	QTY	Available	Remark
3-1	AD67-02510A	BARREL-FIX	1	SNA	
3-2	AD63-06976A	SHIELD-ZOOM RING_XL1203	3	SNA	
3-3	AD94-00455A	ASSY SMD INSERT-XL1203_MF_PI_FPCB_SMD	1	SNA	
3-4	AD66-01030A	SHAFT-STOPPER_XL1203	1	SNA	
3-5	AD67-02512A	BARREL-FUCUS GRIP	1	SNA	
3-6	AD64-03720A	DECO RING-BLUE_XL1203	1	SNA	
3-7	AD67-02511A	BARREL-MID	1	SNA	
3-8	AD64-03336A	BUTTON-I FUCTION	1	SNA	
3-9	AD94-00454A	ASSY SMD INSERT-XL1203_IFN_FPCB_SMD	1	SNA	
3-10	AD61-05238A	PLATE-BUTTON	1	SNA	
3-11	AD63-06981A	GRIP-RUBBER_ZOOM_XL1203	1	SNA	
3-12	AD67-02513A	BARREL-ZOOM RING	1	SNA	

7-4 ASS'Y BARREL FRONT COVER



Loc. No.	Description	QTY	Available	Remark
4-0	ASSY BARREL FRONT COVER	1	SA	

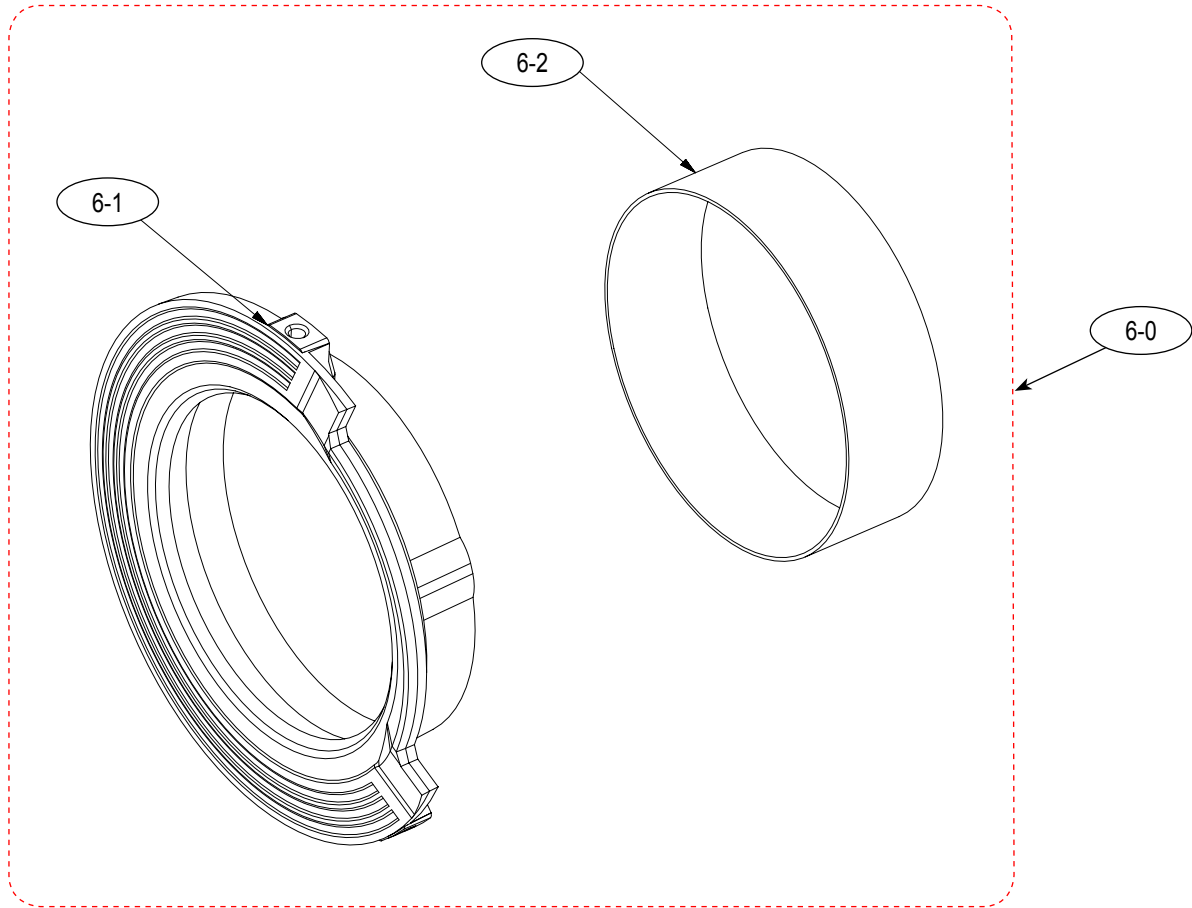
Loc. No.	Parts No.	Description	QTY	Available	Remark
4-1	AD63-06929A	COVER-FRONT	1	SNA	
4-2	AD63-07079A	T/SHEET-COVER_FRONT	2	SNA	

7-5 ASSY BARREL MAIN

Loc. No.	Description	QTY	Available	Remark
5-0	ASSY BARREL MAIN	1	SA	

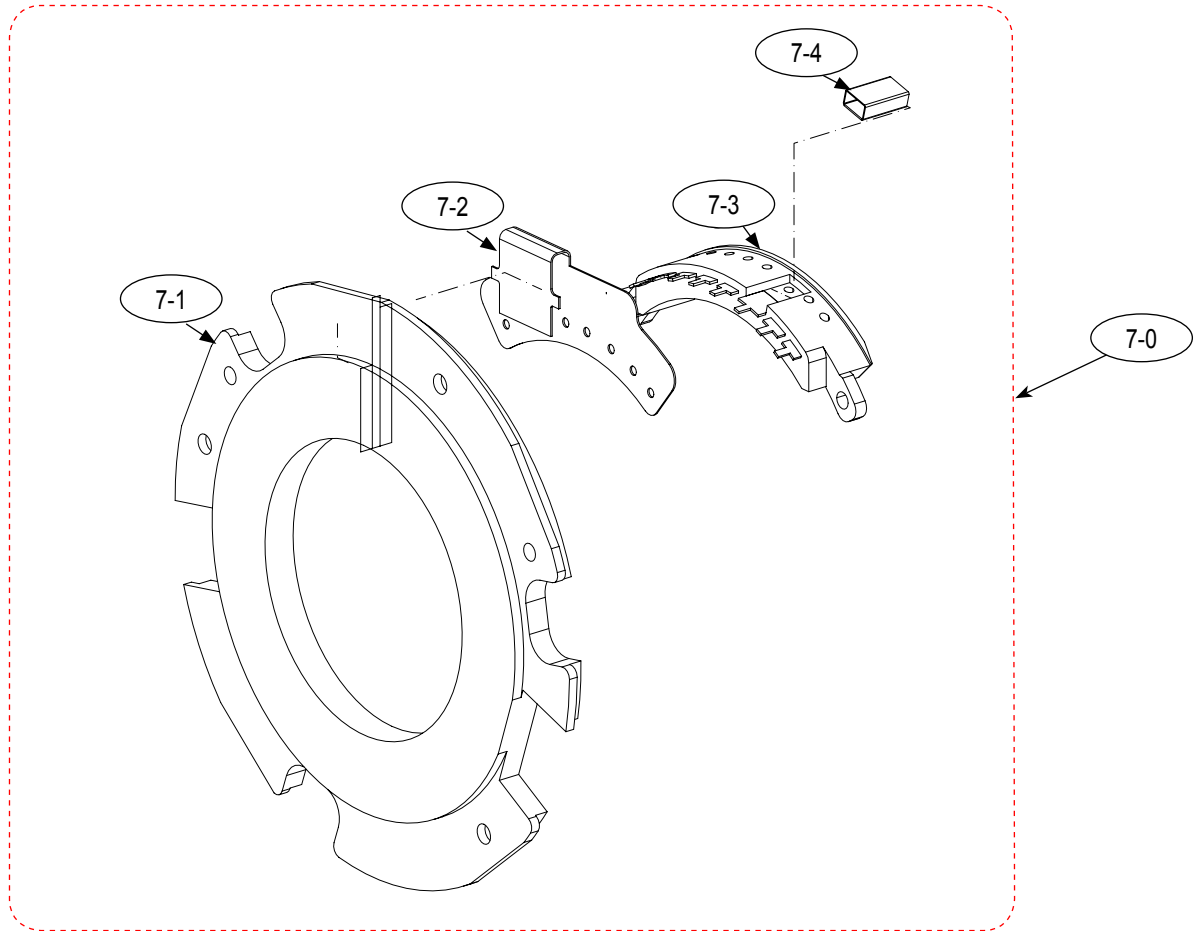
Loc. No.	Parts No.	Description	QTY	Available	Remark
5-1	AD64-03702A	BUTTON SWITCH-AF-MF	1	SNA	
5-2	AD94-00453A	ASSY SMD INSERT-XL1203_AF_MF_SWITCH_FPCB	1	SNA	
5-3	AD61-05735A	PLATE-SWITCH_XL1203	1	SNA	
5-4	AD67-02509A	BARREL-MAIN	1	SNA	
5-5	AD64-03718A	DECO RING-MAIN_XL1203	1	SNA	
5-6	AD66-00680A	SHAFT-SET POINT	1	SNA	

7-6 ASS'Y BARREL-MOUNT_COVER



Loc. No.	Description	QTY	Available	Remark
6-0	ASS'Y BARREL-MOUNT_COVER	1	SA	

Loc. No.	Parts No.	Description	QTY	Available	Remark
6-1	AD63-06928A	COVER-MOUNT	1	SNA	
6-2	AD63-07138A	SHEET-COVER MOUNT_MASK	1	SNA	

7-7 ASS'Y PCB MAIN

Loc. No.	Description	QTY	Available	Remark
7-0	ASSY PCB MAIN	1	SA	

Loc. No.	Parts No.	Description	QTY	Available	Remark
7-1	AD94-00429A	ASSY SMD INSERT-XL1203_MAIN_HPCB_SMD_ASS	1	SNA	
7-2	AD41-01708A	FPC-XL1101_CONTACT_FPCB	1	SNA	
7-3	AD61-04213A	PLATE-CONTACT_ASSY	1	SNA	
7-4	AD63-04940A	CUSHION SHIELD FOAM-EMI GASKET	1	SNA	



Area	Web Site	QR code
Europe, MENA, CIS, Africa	http://gspn1.samsungcsportal.com	
E.Asia, W.Asia, China, Japan	http://gspn2.samsungcsportal.com	
N.America, S.America	http://gspn3.samsungcsportal.com	

This service manual is a property of Samsung Electronics Co.,Ltd.
Any unauthorized or attempted unauthorized use of this service manual
is strictly prohibited and may be punishable under applicable international
and/or domestic law.

© 2012 SAMSUNG Electronics Co.,Ltd
All rights reserved.
Printed in Korea September, 2012

Code No: EC-NX Lens XL-1203