



DIGITAL CAMERA LENS

NX Lens-XL1101
SAMSUNG 60mm F2.8
Macro ED OIS SSA

SERVICE

Manual

DIGITAL CAMERA LENS

CONTENTS



1. Repair information
2. Product specifications
3. Disassembly and reassembly
4. PCB diagrams
5. Block diagram
6. Firmware update
7. Exploded view and parts list



Contents

1. Repair information

1-1 Customer satisfaction statement	1-1
1-2 Warranty and repair service information	1-1
1-3 Precaution for disassembly and reassembly	1-4

2. Product specifications

2-1 Specifications	2-1
2-2 Layouts	2-1
2-3 Attaching and removing the lens	2-2

3. Disassembly and reassembly

3-1 Disassembly	3-1
3-2 Assembly	3-22

4. PCB diagrams

4-1 Main PCB (Top)	4-1
4-2 Main PCB(Bottom)	4-2

5. Block diagram

6. Firmware update

6-1 Before upgrading the firmware	6-1
6-2 How to upgrade the firmware	6-2



Contents

7. Exploded view and parts list

7-1 TOTAL BARREL ASSEMBLY	7-1
7-2 BARREL MODULE SUB ASSEMBLY	7-3
7-3 BARREL FIX ASSEMBLY	7-4
7-4 BARREL COVER ASSEMBLY	7-5
7-5 LENS MAIN PCB ASSEMBLY	7-6
7-6 PACKING ITEMS	7-7

1. Repair information

1-1 Customer satisfaction statement



We hold ourselves to the highest standards of customer satisfaction and service.

- Combining perfect technical solutions with a customer-oriented approach is our top priority.
- We treat our customers we serve with kindness, loyalty, respect and dignity.
- We are committed to earn customers' trust continuously through excellence in repair solutions.
- We keep our promises and commitments to our customers.
- Committed to quick and easy resolution of all support issues, we deliver industry-leading response times.

[Guide]

We listen carefully to our customers' requirements and always find an optimum solution for their needs.

We are committed to your satisfaction and have procedures in place to provide you with a fair, timely and effective means to resolve problems. It combines industry leading preventive assistance with responsive support that helps us address problems quickly and effectively.

We will continuously maintain and improve our services to satisfy the needs of our customers.

1-2 Warranty and repair service information

(1) General terms and conditions

It is guaranteed to be free of charge from defects in material and workmanship under normal use for a period of one year from date of purchase.

Digital Camera and lens come with a one year limited warranty from the date of purchase.

*** The duration of the warranty depends on the laws in the country in which it was purchased.**

The following information will be required to process warranty requests:

- a. We imply warranties to one year from the original date of purchase. In the event that the purchaser is unable to provide a warranty card or proof of purchase, the warranty period will be determined by the date of manufacture. The warranty period shall be decreased to three months from the original product manufactured date.
- b. The coverage under this warranty begins on the date of your purchase of this warranty. In the event that a warranty card or proof of purchase is not available, a purchase receipt, preferably the purchase invoice, to confirm the date of purchase is required for warranty service.
- c. In the event that a valid date of purchase is not available, the warranty period will be determined by the date of manufacture. The warranty period shall be decreased to three months from the original product manufactured date.

(2) Limited warranty

It reserves the right to retain any parts or components replaced at its discretion in the event of a defect noticed in the product. The period with respect to retaining components may vary respectively depending on its components. We are not liable to repair or replace its faulty product after the Warranty Period has expired.

*** We warrant its retaining camera and lenses for five years and three years for the accessories.**

- a. If a warranty claim is filed after the product has been discontinued, we reserves the right to honour the components warranty. Warranty period may vary depending on the type of components.
- b. In the event that no identical warranty information is available for service repair, company has the right to provide warranty. The warranty does not affect the consumers' rights against the company related to its information.

For the length of the period indicated on the chart below, it starts with the date of original purchase

(3) Warranty period for components

Our liability under this warranty shall be limited to the following:

- a. In the event of a same malfunction problem within two months after repair service by Samsung authorized technician, we will repair or replace free of charge the component of the product which is found to be defective.
- b. In the event of the component that you have paid the replacement cost is returned under normal use within one year at our premises, such components will be replaced free of charge component of the product which is found to be defective.

<Table 1-1 Warranty Periods for Parts>

Part Name	Warranty Period
Battery recharger	Six months
AC Adaptor	
Battery	
Remote Control	
CD Software	Three months
Earphone	
Pouch for camera	Not applicable
Cable	

(4) Repair claims

1) Repair free of charge

Essentially, the following causes of damage are covered:

- a. Failing to function properly under normal use during the limited warranty period
- b. Repair Services free of charge is granted for the performance of a specific contract.

2) Repair charges

This warranty does not cover damage caused by:

- a. Defect occurring after the expiration of the Warranty Period
- b. Damage due to negligence, immersion in water, impact, loss and tampering
- c. Repair or alteration performed by any party other than Samsung authorized technicians
- d. Misuse or other improper use of the power button
- e. Exhausted parts such as batteries, lamps and filters, etc.
- f. Defect that occurs due to sand, dirt liquid, etc. entering the inside of the product casing
- g. Consumable parts which have ceased working through normal use such as as earphone, battery discharger and various accessories
- h. Products purchased second hand or any damage that occurs due to a second hand or repair performed by anyone other than Samsung or a Samsung authorized service station.
- i. Fire, earthquake, flood or other natural disasters

The warranty cover period for components is listed below as per table 1-2.

<Table 1-2 Warranty Period for components>

Types of consumer damages			Compensation	
Failing to perform or failing to function properly under normal use	Required for essential repair within 10 days after the purchase		Replace the product or refund	-
	Required for essential repair within one month after the purchase		Replace the product or repair at free of charge	Repair charges
	Applicable to repair	Problem occurred twice due to same malfunction	Free of charge	
		Problem occurred three times due to same malfunction	Replace the product or refund	Repair charges
		Problem occurred four times due to some other malfunction		
Not applicable to repair	Within the period with respect to retaining components		Replace the product at the cost of the depreciated value or refund its price added 10% of depreciation	
Failing to perform or failing to function properly as a result of willful intent and negligence of customer	Applicable repair			Repair charges
	Not applicable to repair (Except for defects or malfunction as a result of fire or flood or other natural disasters)		Replacement charge	Repair charge and replace the product at the cost of the depreciated value

1-3 Precaution for disassembly and reassembly



Caution

1. Use the anti-static handling procedures included with the anti-static mat to ensure that there is no electrostatic discharge and component damage.
2. Static electricity is the biggest danger to the PCB parts you are about to disassemble or assemble. It's important to use your anti-static wrist strap to prevent damage to these components.
3. Dismantling a discrete electronic component such as main condenser is dangerous. It contains high voltage capacitors, which can cause a severe electric shock if you touch them. This holds a charge even when the unit is not plugged in and is capable of delivering a fatal shock.
4. Using excessive force during disassembly and assembly can damage locking parts. Use care when handling "Locking parts" to avoid damage to FPCB or wire. Apply pressure only at the points designated in the maintenance instructions.
5. Due to increasing environmental concerns, a number of restrictions have been placed on the material content of electronic components and electronic assemblies. It requires utilizing Lead-Free (Pb-free) Soldering.
6. The following precautions must be observed when handling such components below.


<Table 1-3>

Component	Precautions
FPCB	FPCB is brittle material. It can be easily damaged thus it should be handled with care. It is recommended to use wooden or plastic tweezers for manual placement.
CCD (CMOS) IR CUT Filter LCD, LENS	Be careful not to stained your fingerprint. It is recommended to use wooden or plastic tweezers for manual placement. Stain is often caused by the Alcohol used in these components. Find a clean, well-ventilated place to do your work.
PCB	Use an anti-static mat as well as an anti-static wrist strap to avoid ESD damage to PCB.
CONNECTOR	To use wooden or plastic tweezers is recommended for manual placement. Metal tip tweezer might make marks or damage.
BARREL	Always follow proper direction while assembling the components of the barrel.

2. Product specifications

2-1 Specifications

Specifications

Lens Name	SAMSUNG 60mm F2.8 Macro ED OIS SSA
Image	
Focal Length	60 mm (equivalent to 92.4 mm in 35 mm format)
Elements in Group	12 elements in 9 groups (1 aspheric lens, 1 low dispersive lens included)
Angle of View	26.4°
Aperture	F2.8 (minimum: F32), (Number of Blades: 7, Circular Aperture Diaphragm)
Mount Type	Samsung NX mount
Optical Image Stabilizer	Included
Minimum Focus Distance	0.187 m - infinity
Maximum Magnification	Approx. 1X
i-Scene	Supported (Portrait, Children, Backlight, Close Up, Text)
i-Function Ring	Yes
i-Function Button	Yes
Lens Hood	Included
Filer Size	52 mm
Max. Diameter X Length	73.5 X 84 mm
Weight	Approx. 389 g (without hood)
Operating Temperature	0~40 °C
Operating Humidity	5~85 %

2-2 Layouts

Layouts

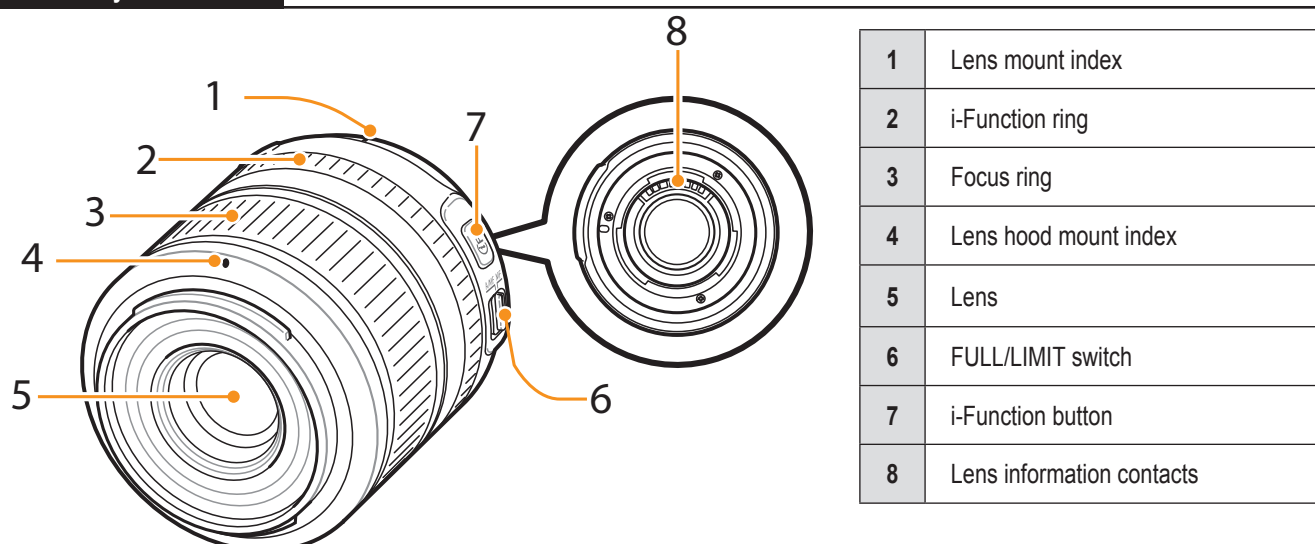


Fig 2-1

2-3 Attaching and removing the lens



- Before mounting the lens remove the lens cap, lens mount cover, and body cap.

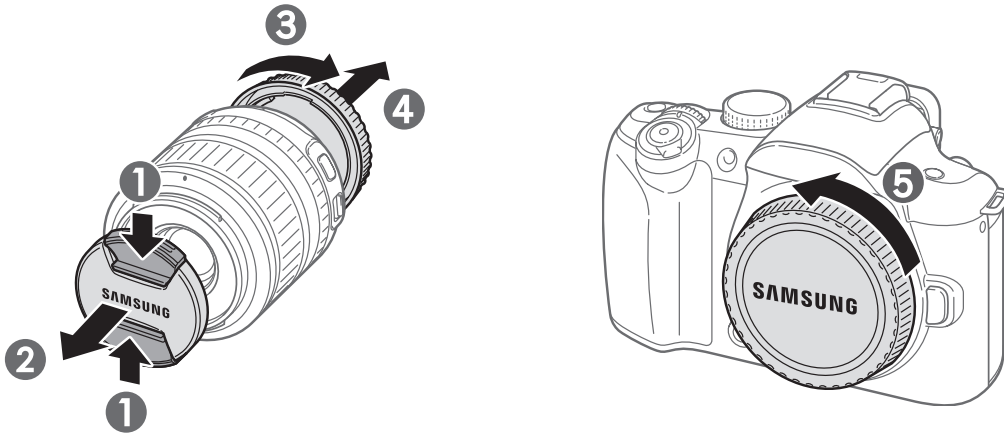


Fig 2-2

Attaching the lens

- 2 Align the red mark on the lens with the red mark on the camera body. Then, rotate the lens clockwise until it locks into space.

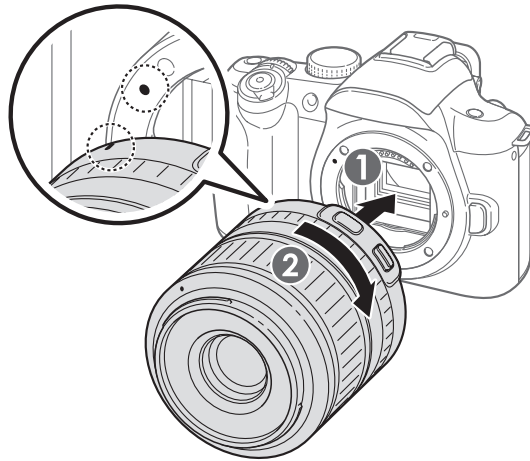


Fig 2-3

Removing the lens

- 2 While pressing the lens release button, rotate the lens counter-clockwise to detach it from the camera body.

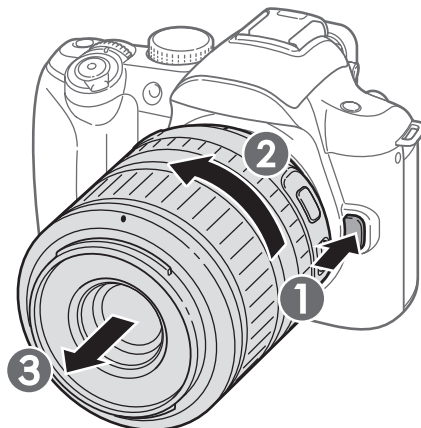


Fig 2-4

3. Disassembly and reassembly

3-1 Disassembly

Removing the LENS MOUNT

1. Remove the three screws (6003-001674).
2. Remove the three screws (6003-001755).



Fig. 3-1

3. After removing the COVER MOUNT, remove the two screws(6001-002145)

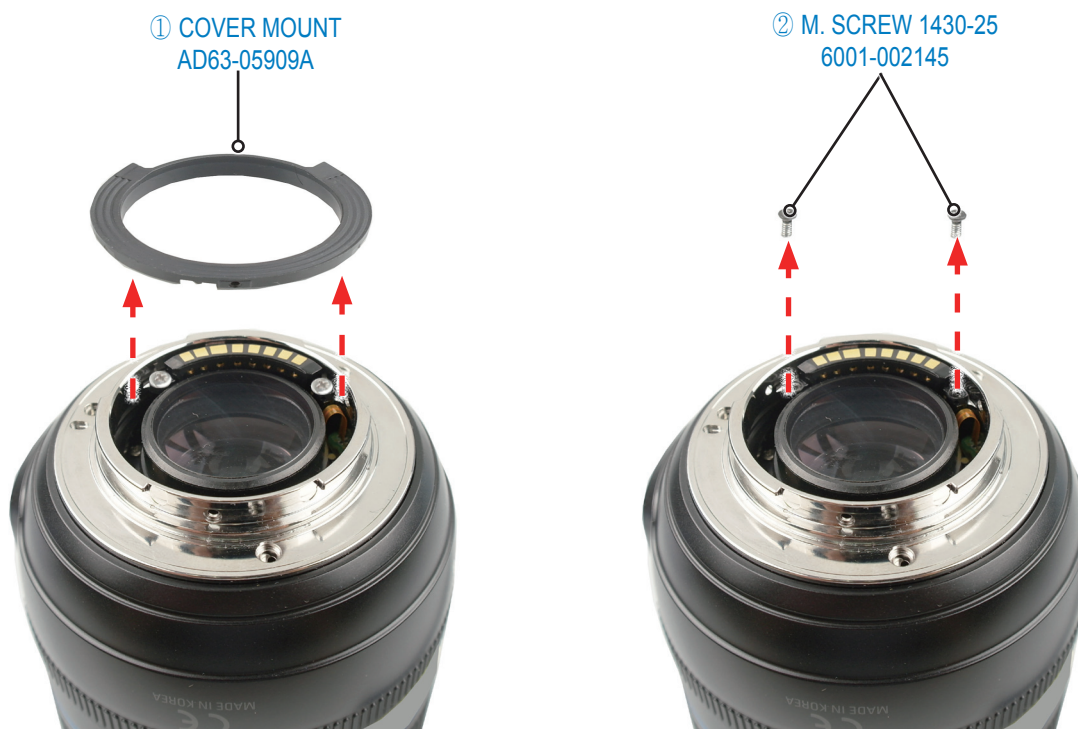


Fig. 3-2



Reference : The number of the WASHER may vary in the number of punt according to the type of Lens.

4 .After removing the LENS MOUNT, remove the WASHER BF ADJ 03.



Fig. 3-3

Removing the ASSY BARREL COVER



Caution: Use extra care when removing the FPCB from the connector.

1. Refer to image A and remove the FPCB in the direction of the arrow as illustrated.
Remove the three screws(6001-001353).

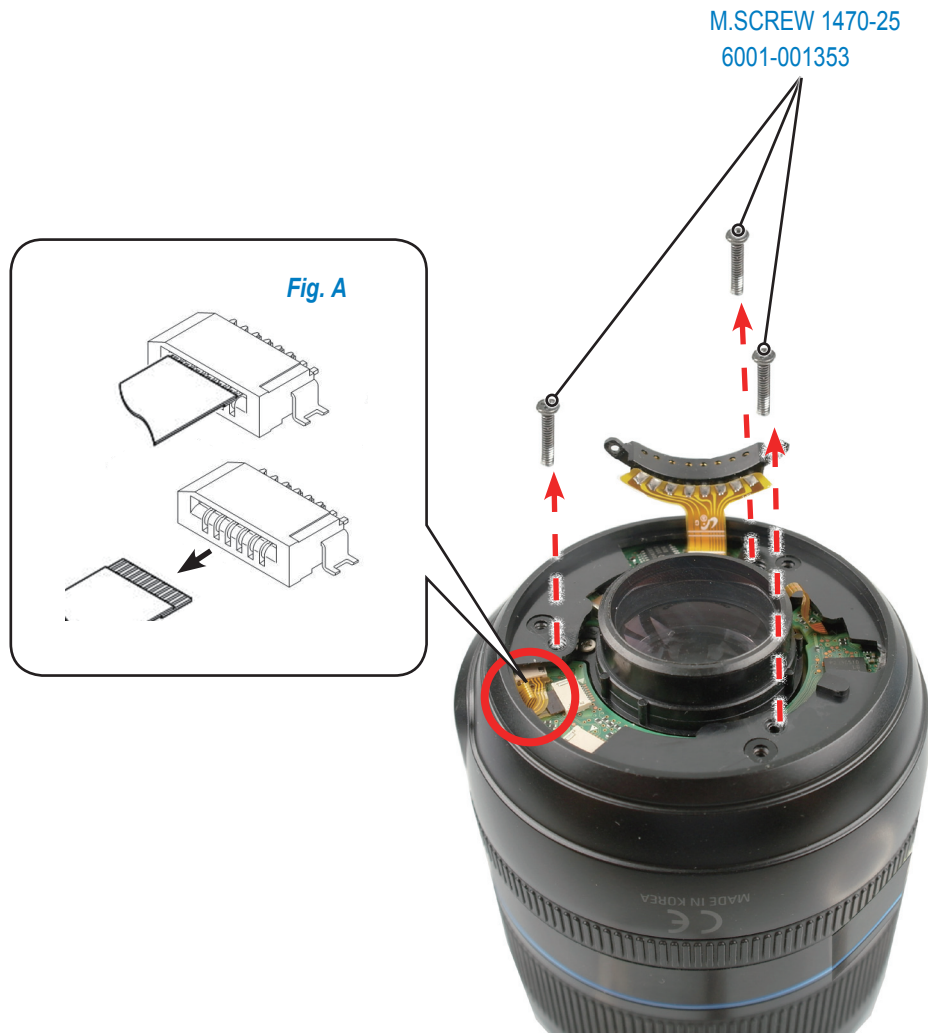


Fig. 3-4

2. Remove the ASSY BARREL COVER.



Fig 3-5

Removing the MAIN HPCB ASSY



Reference : 1. Names of Each FPCB

- ① SSA FPCB
- ② IRIS FPCB
- ③ MF PI + IF PI FPCB
- ④ AF PI FPCB (HOME PI)
- ⑤ OIS FPCB
- ⑥ GMR SENSOR FPCB

2. Symptom and Explanation

- ① SSA FPCB damage
 - Failure of AF and SSA
- ② IRIS FPCBB damage
 - Failure of FNo. adjustment
- ③ MF PI + IF PI FPCB damage
 - Unable to enlarge the screen when MF is on
 - i-Fn dialing malfunction or failure of i-Fn
- ④ AF PI FPCB damage
 - Failure of AF FAIL and AF
 - Occur the vibration or SSA malfunction
- ⑤ OIS FPCB damage
 - Failure of OIS or OIS malfunction
- ⑥ GMR SENSOR FPCB damage
 - Failure of AF

1. Refer to image A and remove the six FPCBs from the connector.

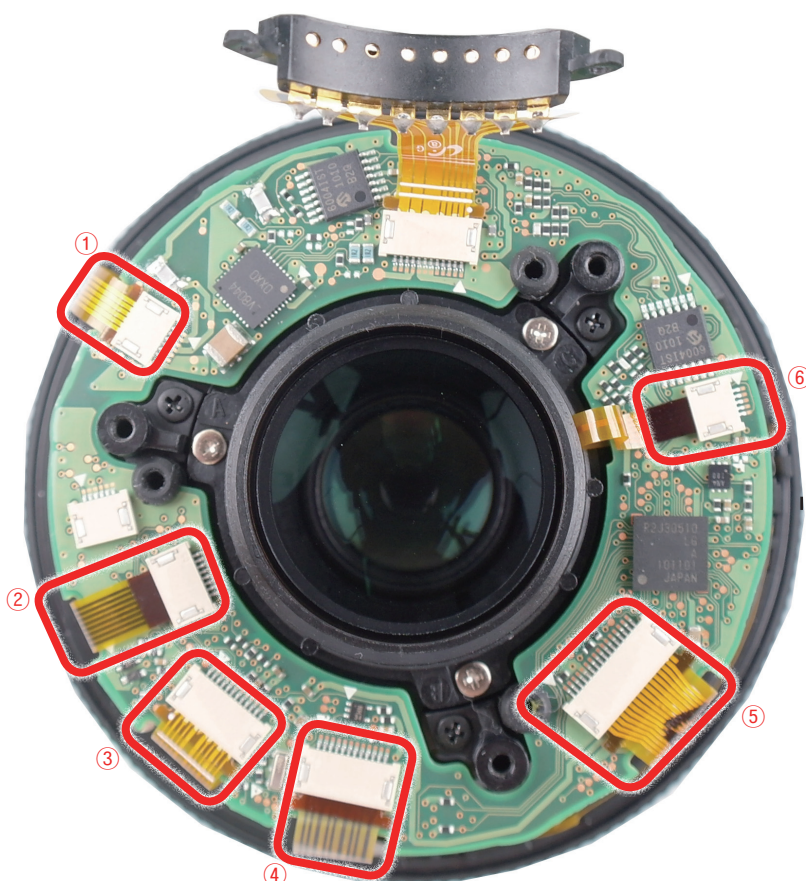


Fig 3-6

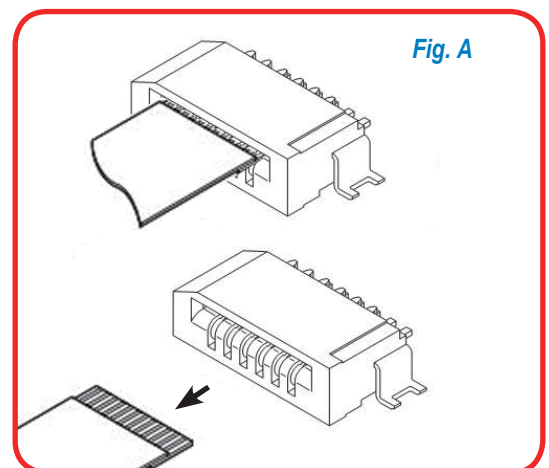


Fig. A

2. Remove the MAIN HPCB ASSY.

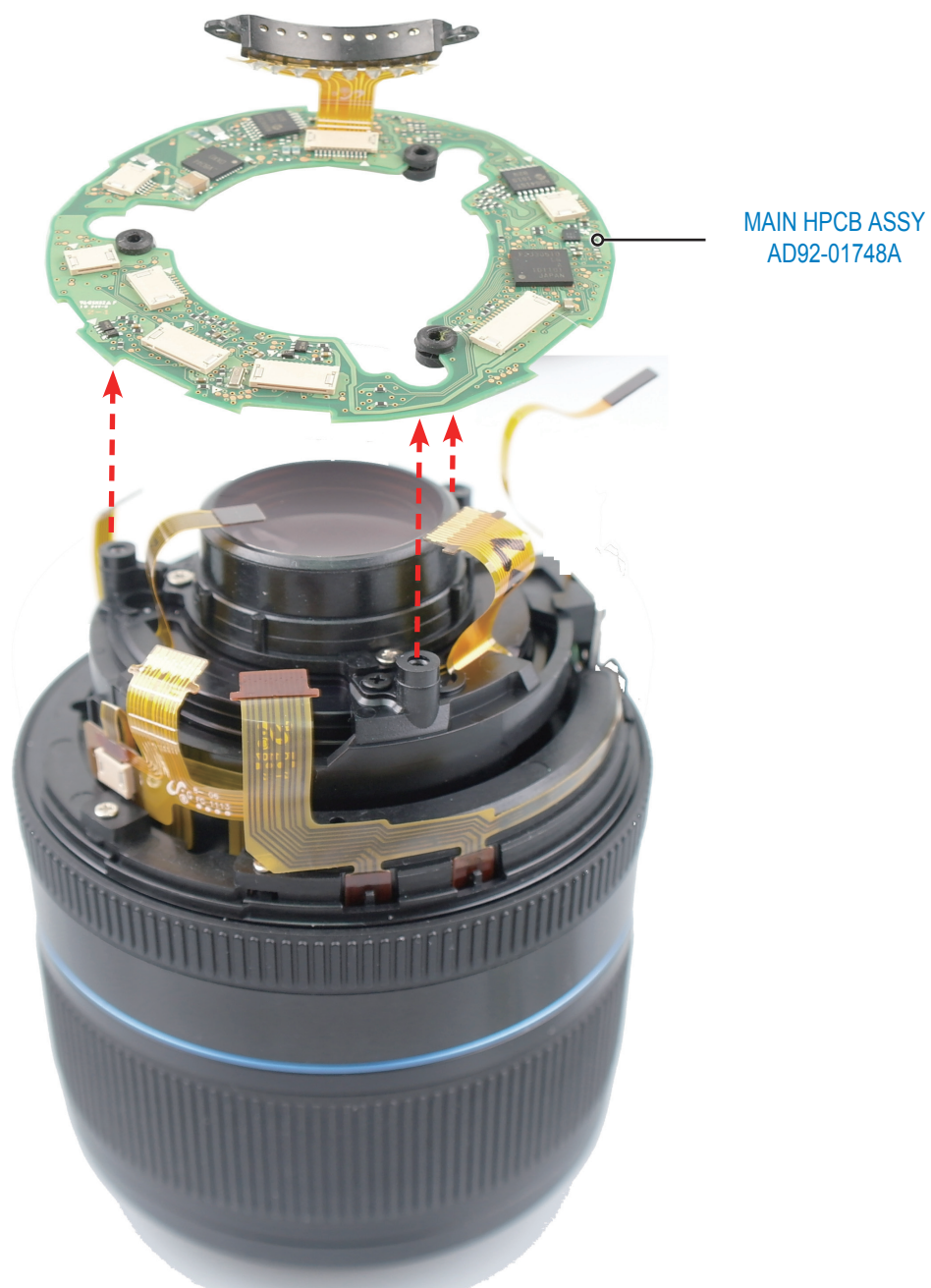


Fig 3 -7

Removing the BARREL AF PI HOLDER 2 / AF PI FPCBB

1. Remove the three screws (6003-001717).



Fig 3-8

Removing the GMR SENSOR

1. Remove the two screws (6003-001703).

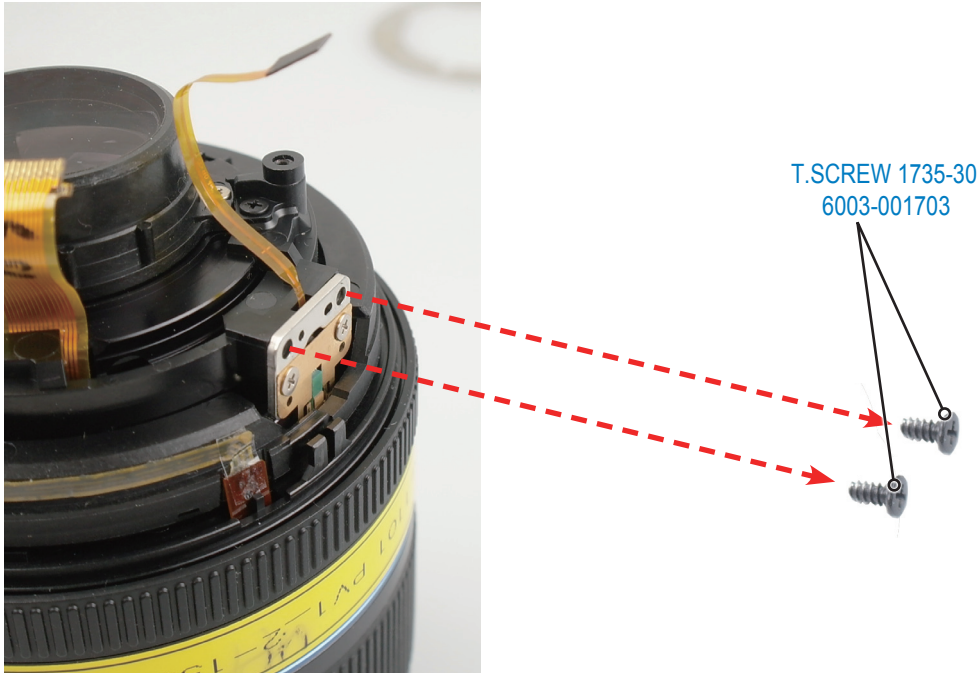


Fig 3-9

2. After removing the two screws (6001-002234), remove the GMR SENSOR and PLATE GMR.
(Followed by the sequence number as illustrated below.)

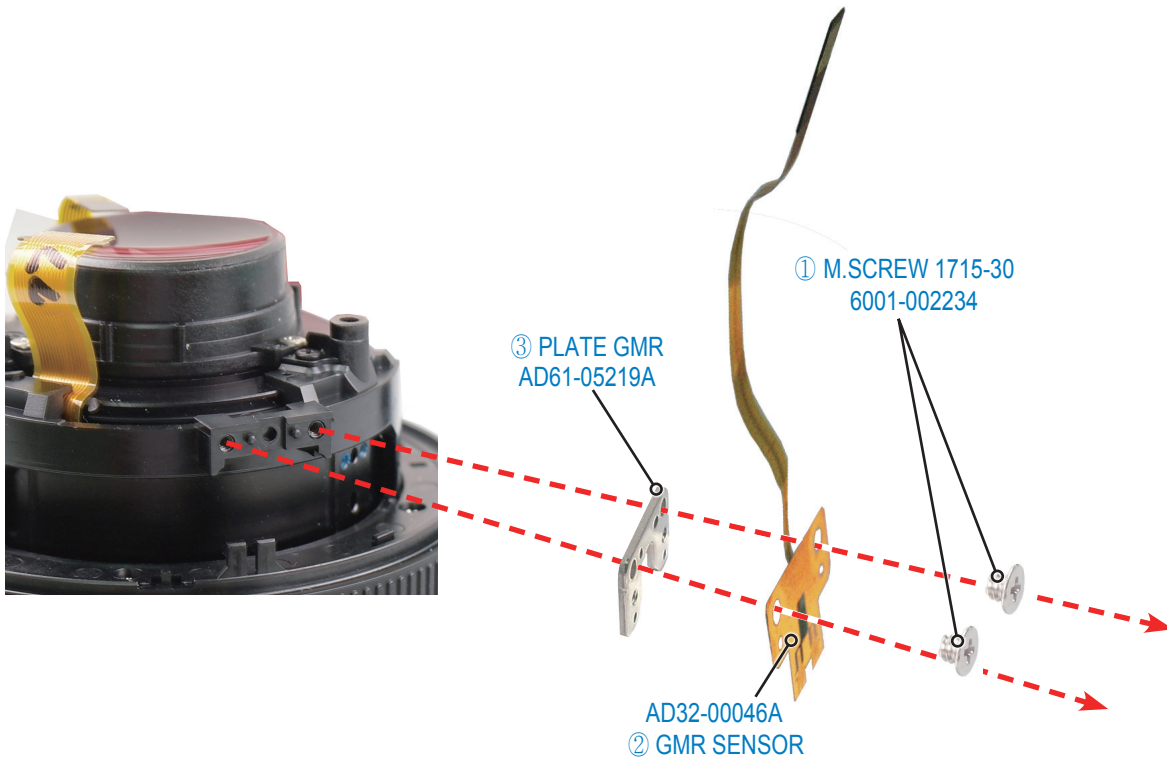


Fig 3-10

3. Remove the BARREL_AF_PI HOLDER_2.
Replace the AF PI FPCB if it is damaged.

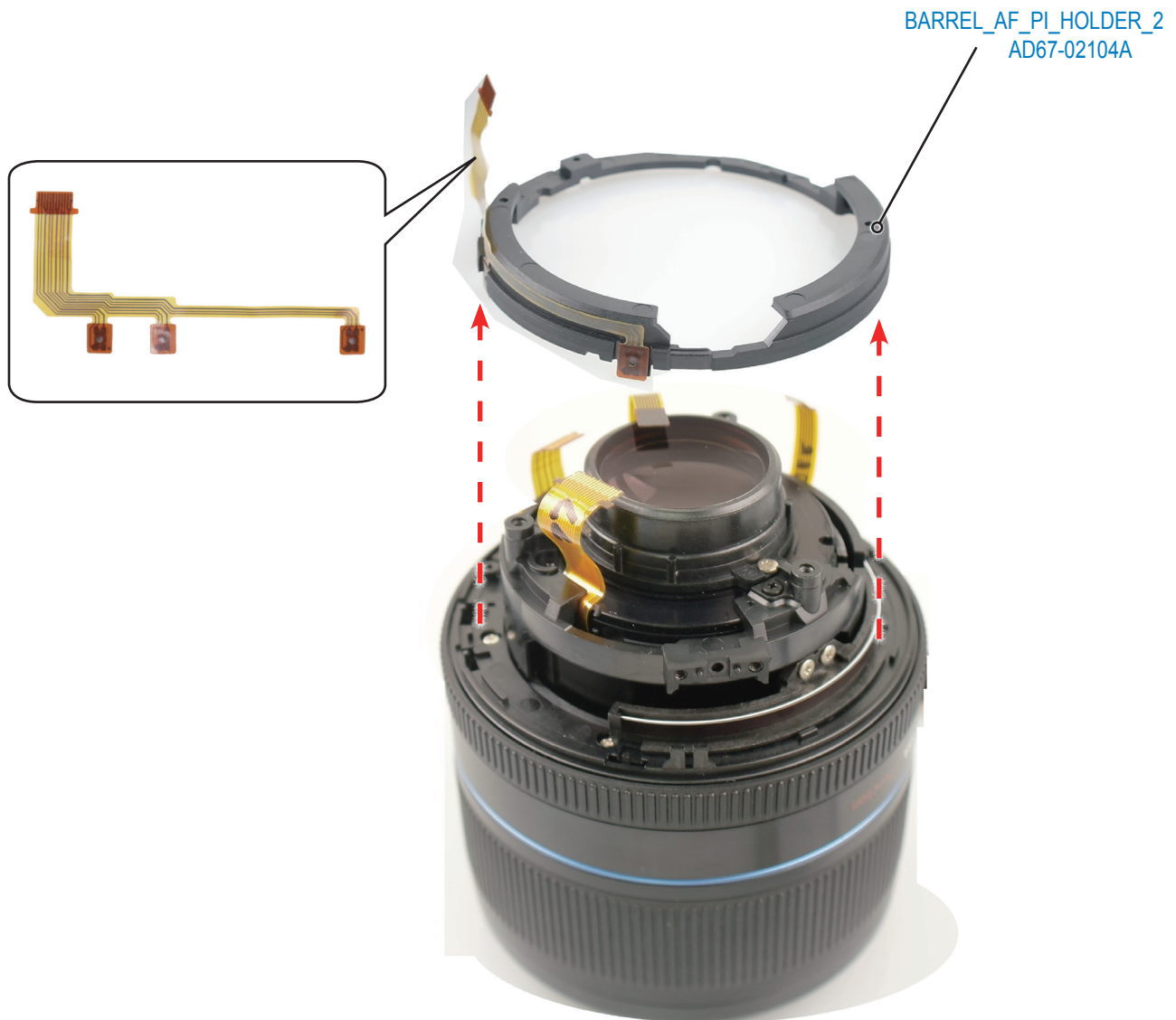


Fig 3-11

Removing the ASSY BARREL BASE MR



Caution : Use extra care with MR TAPE when removing ASSY BARREL BASE MR and try not to scratch the side of the MR TAPE.

1. Remove the two screws (6001-001575), then remove the ASSY BARREL BASE MR.



Fig 3-12

Removing the ASSY BARREL FIX

1. Remove the FPCB as illustrated in image A and remove the adhesive tape.

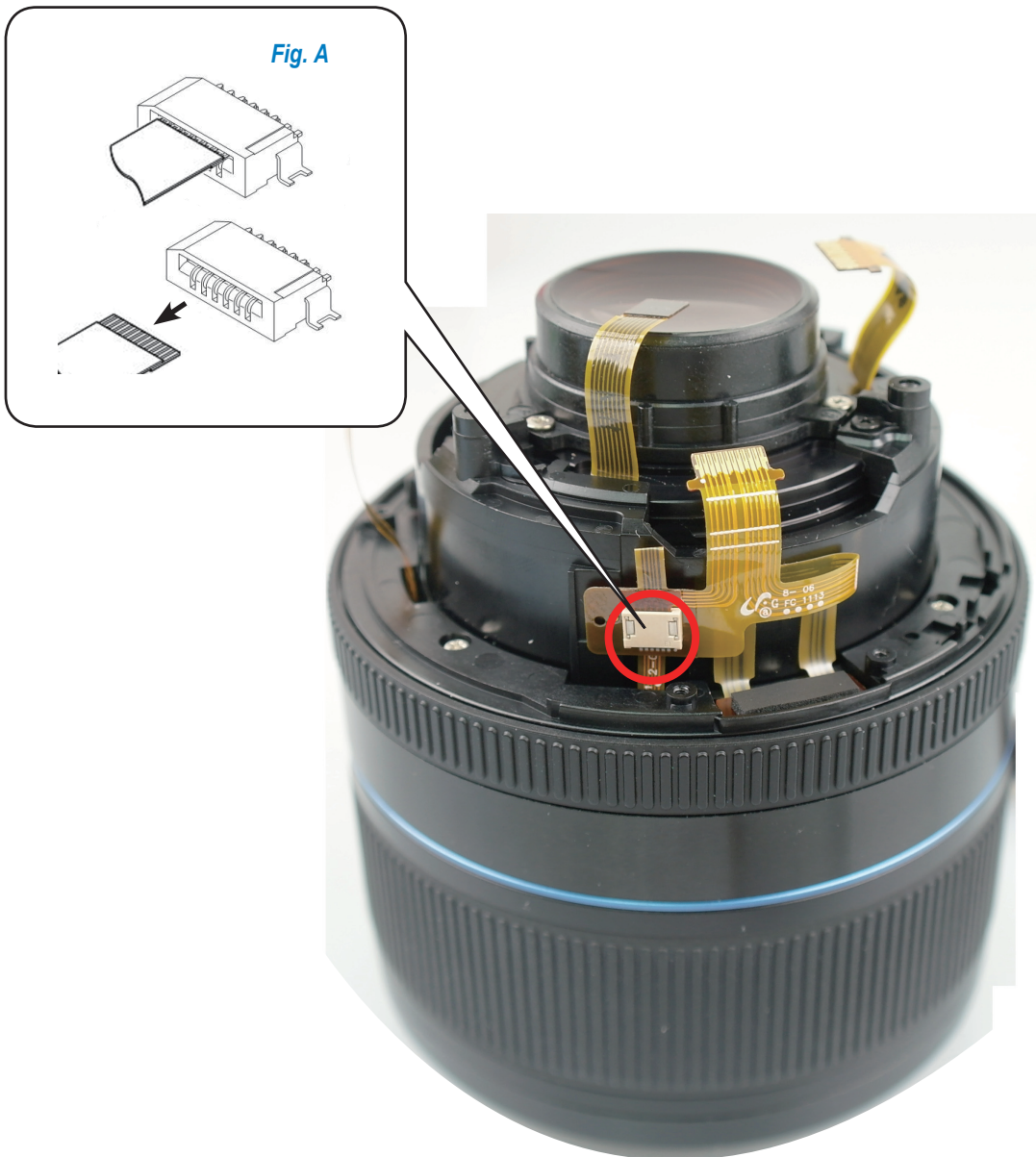


Fig 3-13

2. Remove the GRIP FOCUS RUBBER.



Fig 3-14

3. Remove the FPCB.

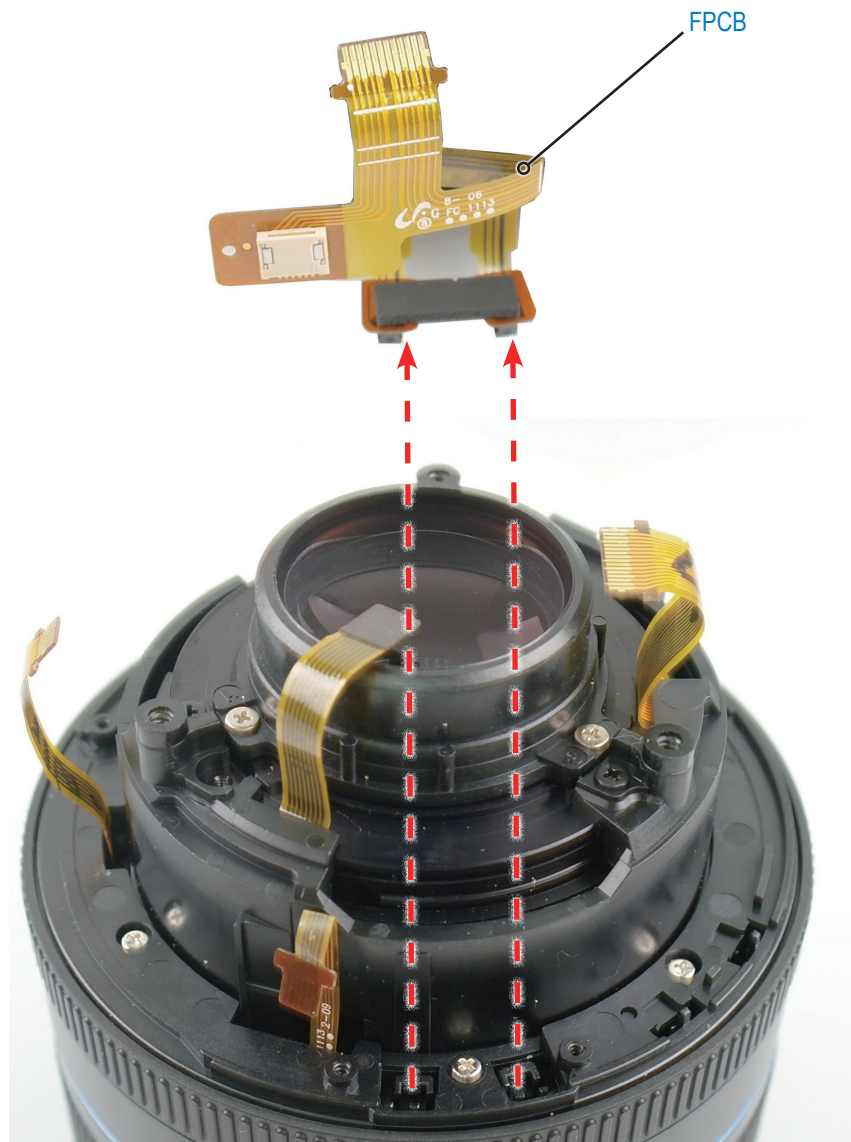


Fig 3-15

4. After removing the three screws (6001-001508), remove the ASSY BARREL FIX.

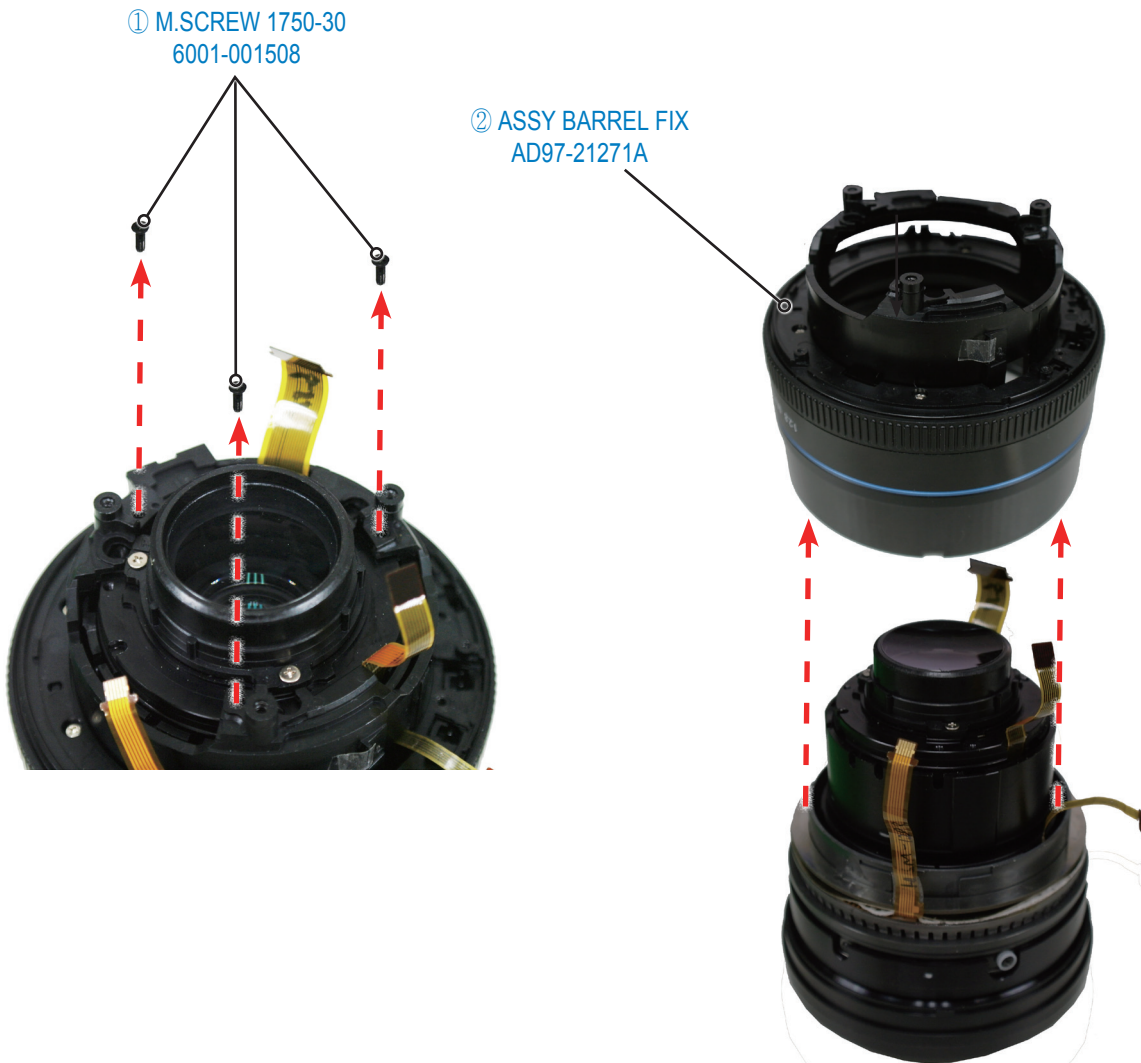


Fig 3-16

Removing the ASSY BARREL COVER FRONT



Caution: ① Use extra care with the 1st group lens when removing the ASSY BARREL COVER FRONT and try not to scratch the lens.
② Replace with the new COVER 1ST FRONT and ASSY BARREL COVER FRONT because they are unable to reuse due to the scratch damage.

1. ASSY BARREL COVER FRONT is secured with double-sided adhesive tape. Pry up the ASSY BARREL COVER FRONT by inserting a flat-head screwdriver into the groove between the ASSY BARREL COVER FRONT and the COVER 1ST FRONT.
2. Remove the COVER 1ST FRONT.



Fig 3-17

3. Remove the three screws (6001-001575).



Fig 3-18

4. Remove the ASSY BARREL FILTER, then remove the PLATE FOCUS GRIP.



Fig 3-19

**Removing the
ASSY BARREL FOCUS GRIP**

1. Remove the screw (6003-001670).



Fig 3-20

2. Lift up the MF PI FPCB and remove the ASSY BARREL FOCUS GRIP.

ASSY BARREL FOCUS GRIP
AD97-21274A

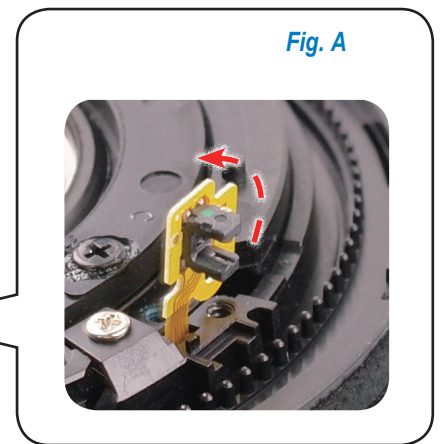


Fig 3-21

Removing the ASSY BARREL-MODULE SUB

1. Remove the three screws (6001-002145).



Fig 3-22



Caution: Use care with MF PI FPCB when removing the ASSY BARREL SSA FTM.

1. From the front view of ASSY BARREL ADJ SUB, turn the ASSY BARREL SSA FTM counterclockwise until it shows the image A through the hole as indicated below. Align the ASSY BARREL SSA FTM with the COLLAR_CAM with white color (the longest one of the three). Remove the ASSY BARREL SSA FTM and the ASSY BARREL ADJ SUB..



Fig 3-23

3-2 Assembly

Assembling the ASSY BARREL-MODULE SUB

Caution: : Use care with MF PI FPCB when assembling the ASSY BARREL SSA FTM.

1. From the front view of ASSY BARREL ADJ SUB, turn the ASSY BARREL SSA FTM counterclockwise until it shows the image A through the hole as indicated below. Align the ASSY BARREL SSA FTM with the COLLAR_CAM with white color (the longest one of the three). Assemble the ASSY BARREL SSA FTM and the ASSY BARREL ADJ SUB.



Fig 3-24

2. Apply the LOCTITE on the three screws end (6001-002145) and tighten them.



Fig 3-25

Assembling the ASSY BARREL FOCUS GRIP



Reference : Before installation, make sure to align the groove of the ASSY BARREL FOCUS GRIP with the two RIB positions of the ASSY BARREL SSA FTM as illustrated below.

1. Close the MF PI FPCB in the direction of the arrow, then install the ASSY BARREL FOCUS GRIP.



Fig 3-26

2. Bend the FPCB and be careful to properly align the part where is the below side of the FPCB with the groove of the ASSY BARREL SSA FTM. Push the part by the red square into the groove, making sure it is properly seated. Tighten the screw (6003-001670).



Fig 3-27

Assembling the ASSY BARREL COVER FRONT



Caution: Make sure to install only one of the PLATE FOCUS GRIP.
When inserting the several PLATE FOCUS GRIP, it will be unable to tighten the screw.

1. Insert the PLATE FOCUS GRIP that prevents the noise.
Before installing the ASSY BARREL FILTER, refer to image A and B.
Align the ASSY BARREL FILTER and the ASSY BARREL SSA FTM to ensure the correct alignment is achieved by the red circle below. Once the correct alignment is accomplished, install the ASSY BARREL FILTER in the direction of the arrow.



Fig 3-28

2. Tighten the three screws (6001-001575).



Fig 3-29

Assembling the ASSY BARREL FIX

1. Refer to image A and align the groove of the BARREL GRIP2 with the groove of the ASSY BARREL MODULE SUB and install them. Insert the two FPCBs labeled (e) and (f) through the holes labeled (c) and (d) respectively. Insert the other two FPCBs through the center hole.

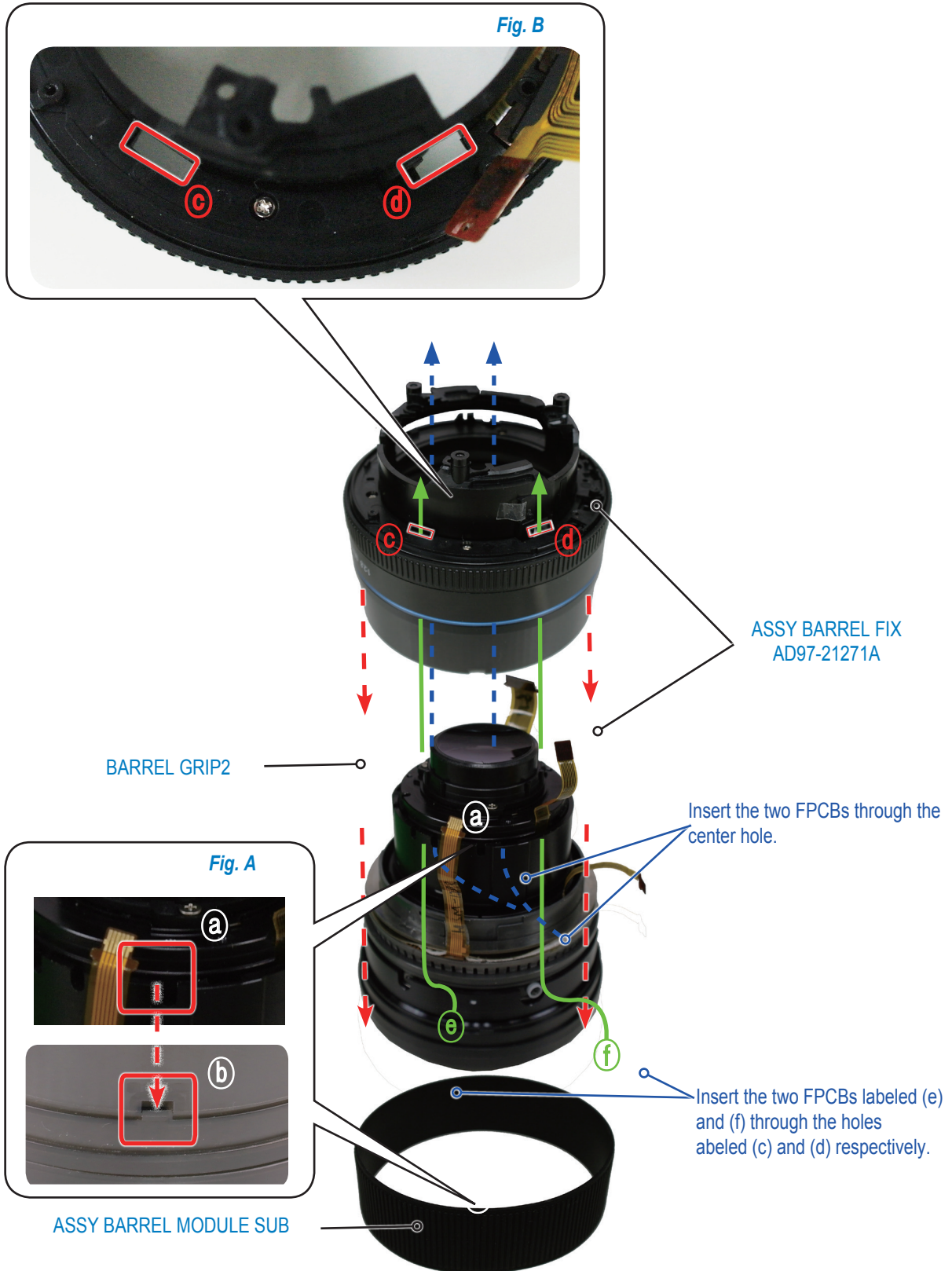


Fig 3-30

2. Apply the LOCTITE on the end of the three screws (6001-001508) and tighten them.



Fig 3-31

3. Attach the MF PI FPCB to the ASSY BARREL FIX.
 Fold the IF PI FPCB towards the outside and attach it to the ASSY BARREL FIX.
 Connect the MF PI FPCB as illustrated in image A.

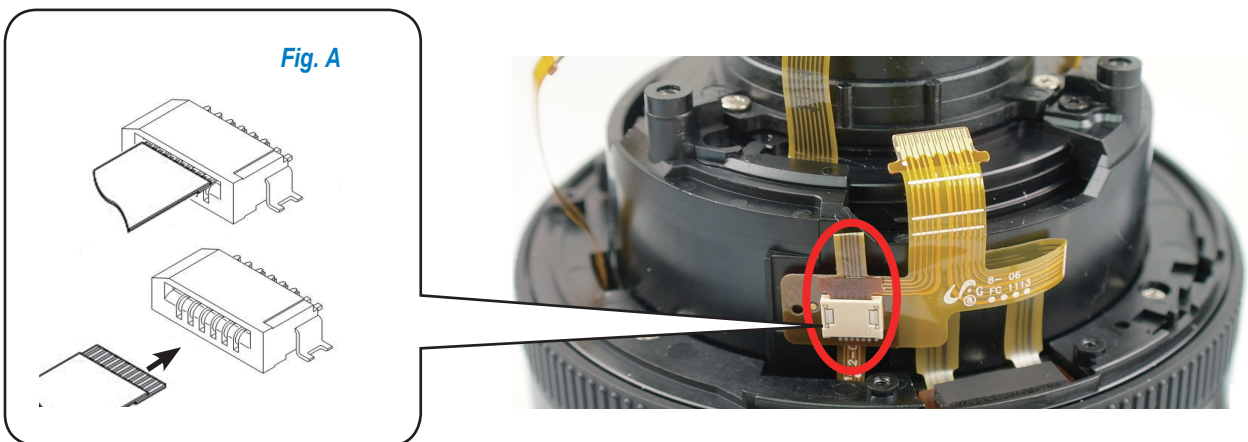


Fig 3-32

Assembling the ASSY BARREL BASE MR




Caution: Refer to image B. Avoid scratching the magnetic strip and avoid the ingress of dust, dirt, etc. Replace magnetic strip by new if it is damaged.

1. Turn the unit counterclockwise from position (a) to position (b) and install the ASSY BARREL BASE MR. Tighten the two screws (6001-001575).



Fig 3-33

Assembling the BARREL_AF_PI_HOLDER_2

 **Caution:** Check the AF PI FPCB and replace if it is damaged.

1. From the front view of the mount, turn the FOCUS RING counterclockwise.
Align the BARREL_AF_PI_HOLDER_2 with three positions of AF PI as illustrated in image A. Align the BARREL_AF_PI_HOLDER_2 with the position of the mount to ensure the correct alignment is achieved as illustrated in image B. Then push the BARREL_AF_PI_HOLDER_2 until it clicks into the position.

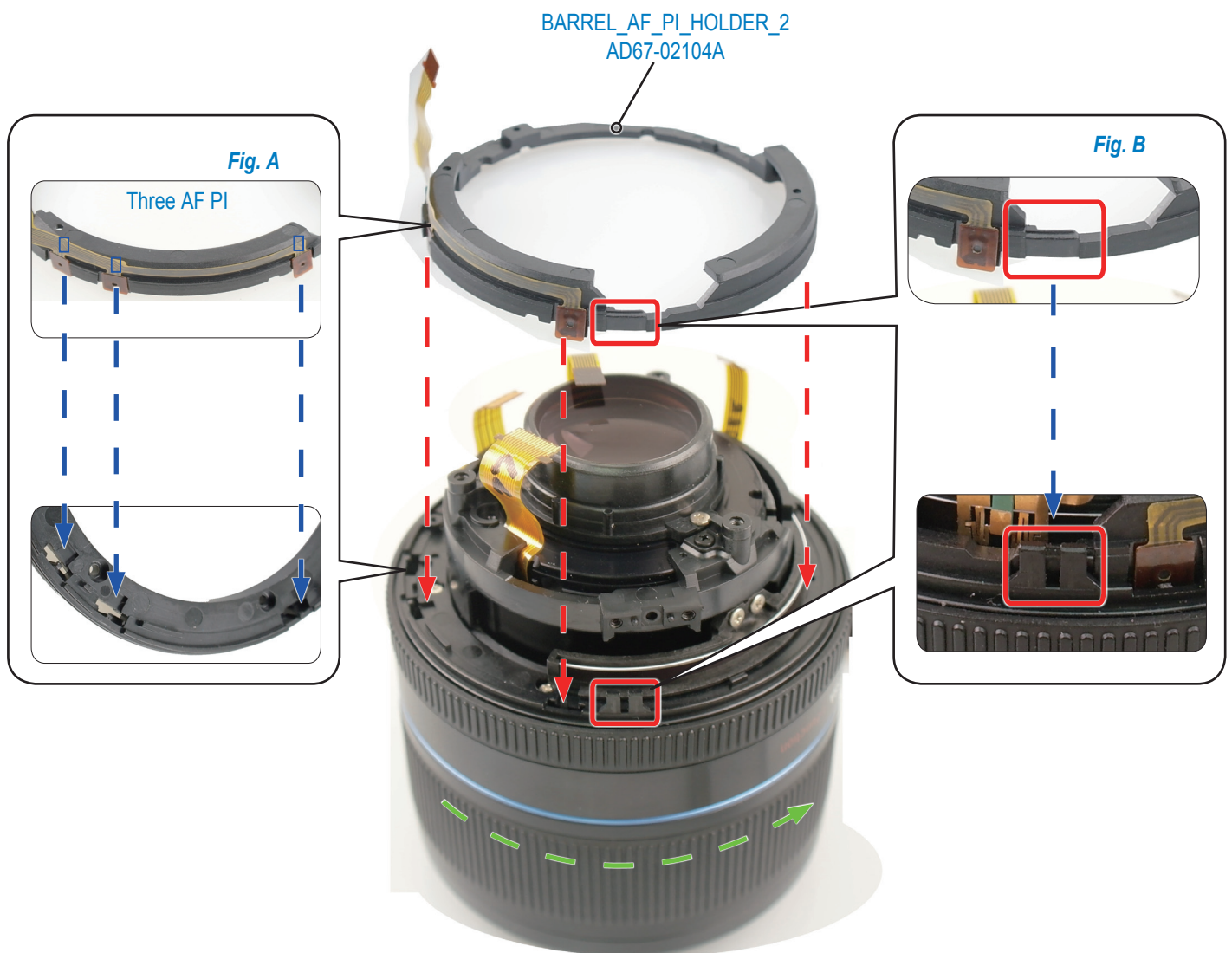



Fig 3-34

Assembling the GMR SENSOR

 **Caution:** Refer to image A. If a GMR SENSOR is bent or crooked, replace it with new. Attach a GMR SENSOR on the no burr side of PLATE GMR.

1. Insert the FPCB into the down side of the PLATE GMR and GMR SENSOR.
After tightening the two screws (6001-002234), then tighten the two screws (6003-001703).
(Followed by the sequence number as illustrated below.)

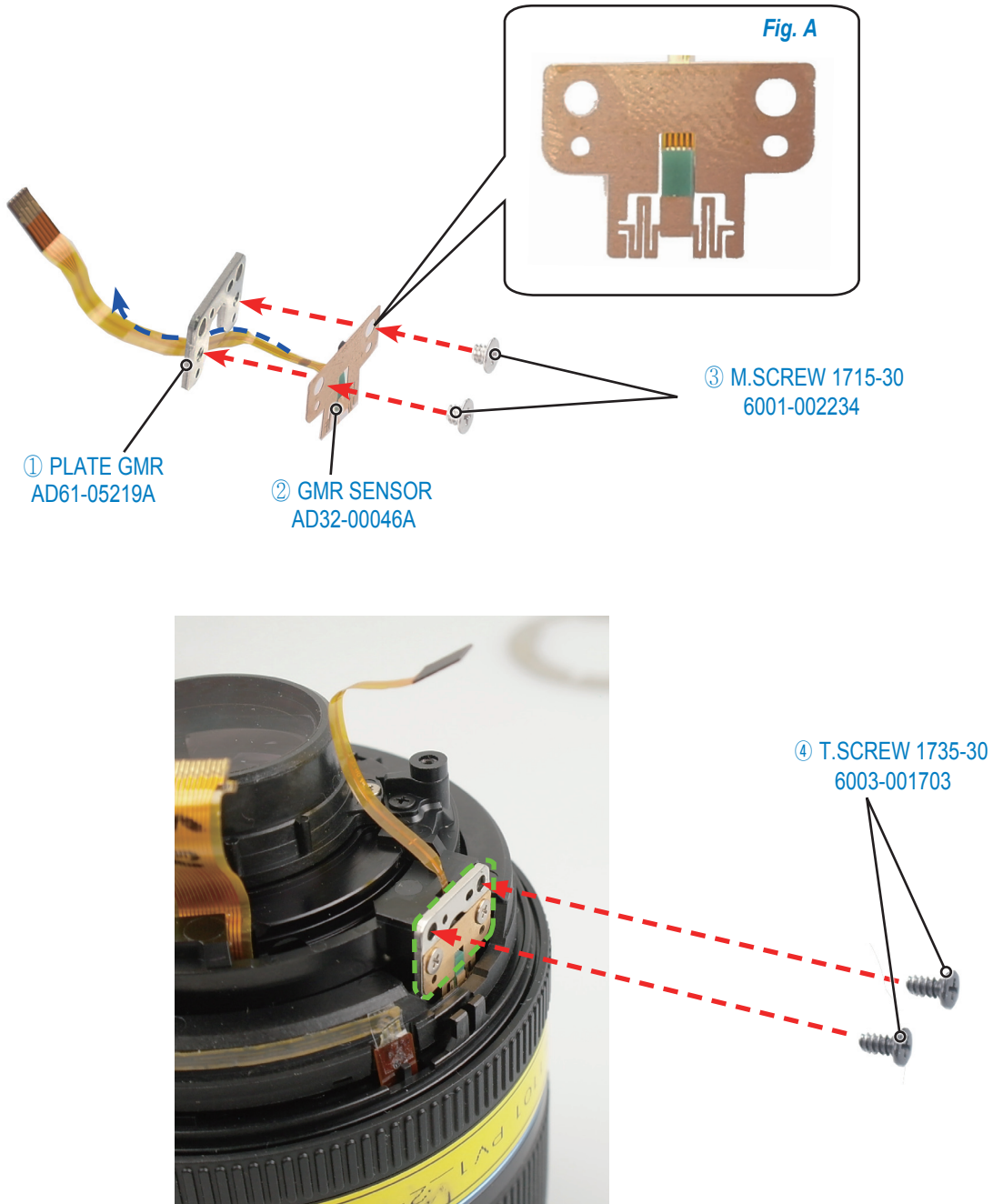


Fig 3-35

2. Tighten the three screws (6003-001717).



Fig 3-36

Assembling the MAIN HPCB ASSY

1. Install the MAIN HPCB ASSY in the direction of the arrow, making sure the CUSHION HPCB on the top of the MAIN HPCB ASSY is towards to the mount side as illustrated below.

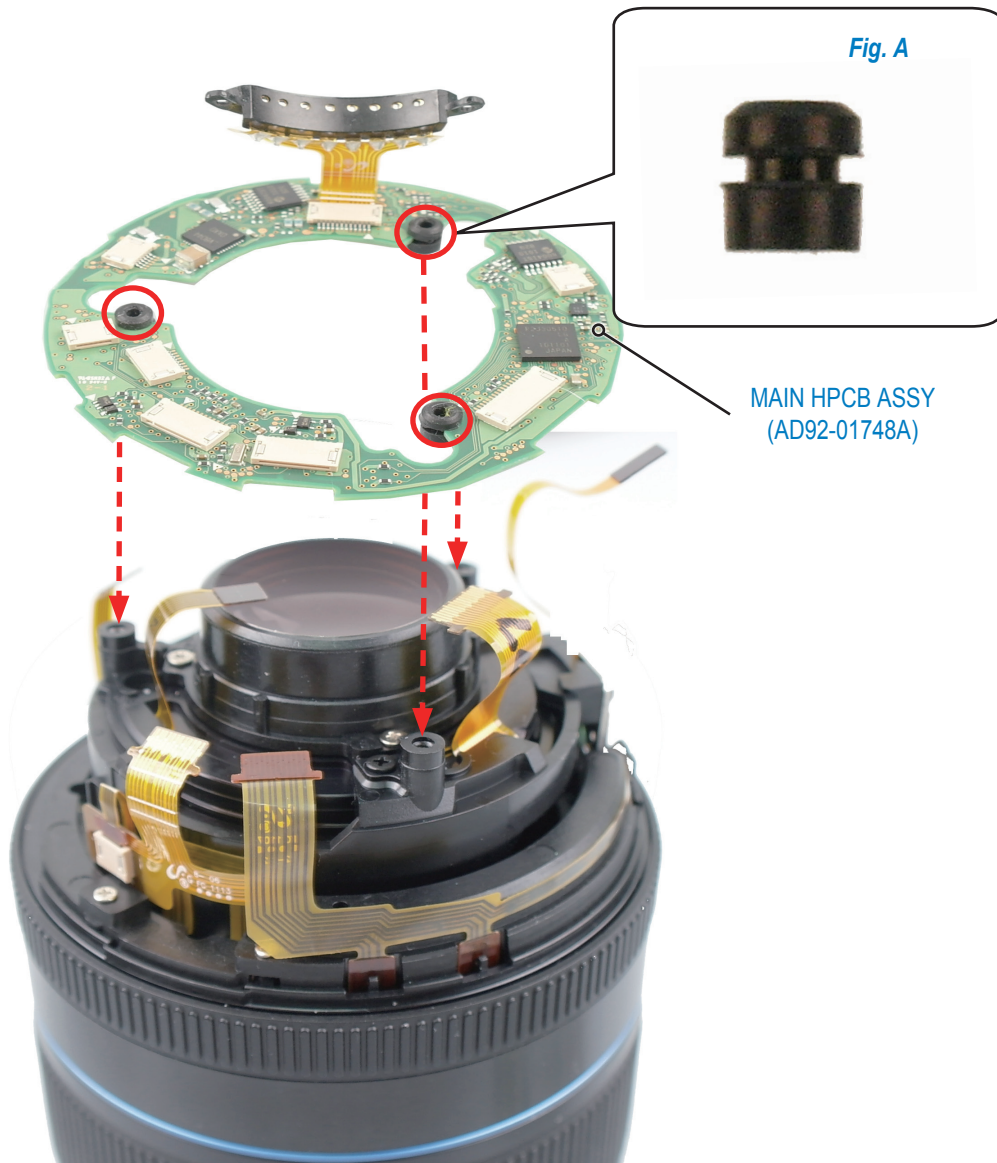


Fig 3 -37


Reference : 1. Names of Each FPCB

- ① SSA FPCB
- ② IRIS FPCB
- ③ MF PI + IF PI FPCB
- ④ AF PI FPCB (HOME PI)
- ⑤ OIS FPCB
- ⑥ GMR SENSOR FPCB

2. Symptom and Explanation

- ① SSA FPCB damage
 - Failure of AF and SSA
- ② IRIS FPCB damage
 - Failure of FNo. adjustment
- ③ MF PI + IF PI FPCB damage
 - Unable to enlarge the screen when MF is on
 - i-Fn dialing malfunction or failure of i-Fn
- ④ AF PI FPCB damage
 - Failure of AF FAIL and AF
 - Occur the vibration or SSA malfunction
- ⑤ OIS FPCB damage
 - Failure of OIS or OIS malfunction
- ⑥ GMR SENSOR FPCB damage
 - Failure of AF

2. Gently connect the six FPCBs as illustrated in image A.

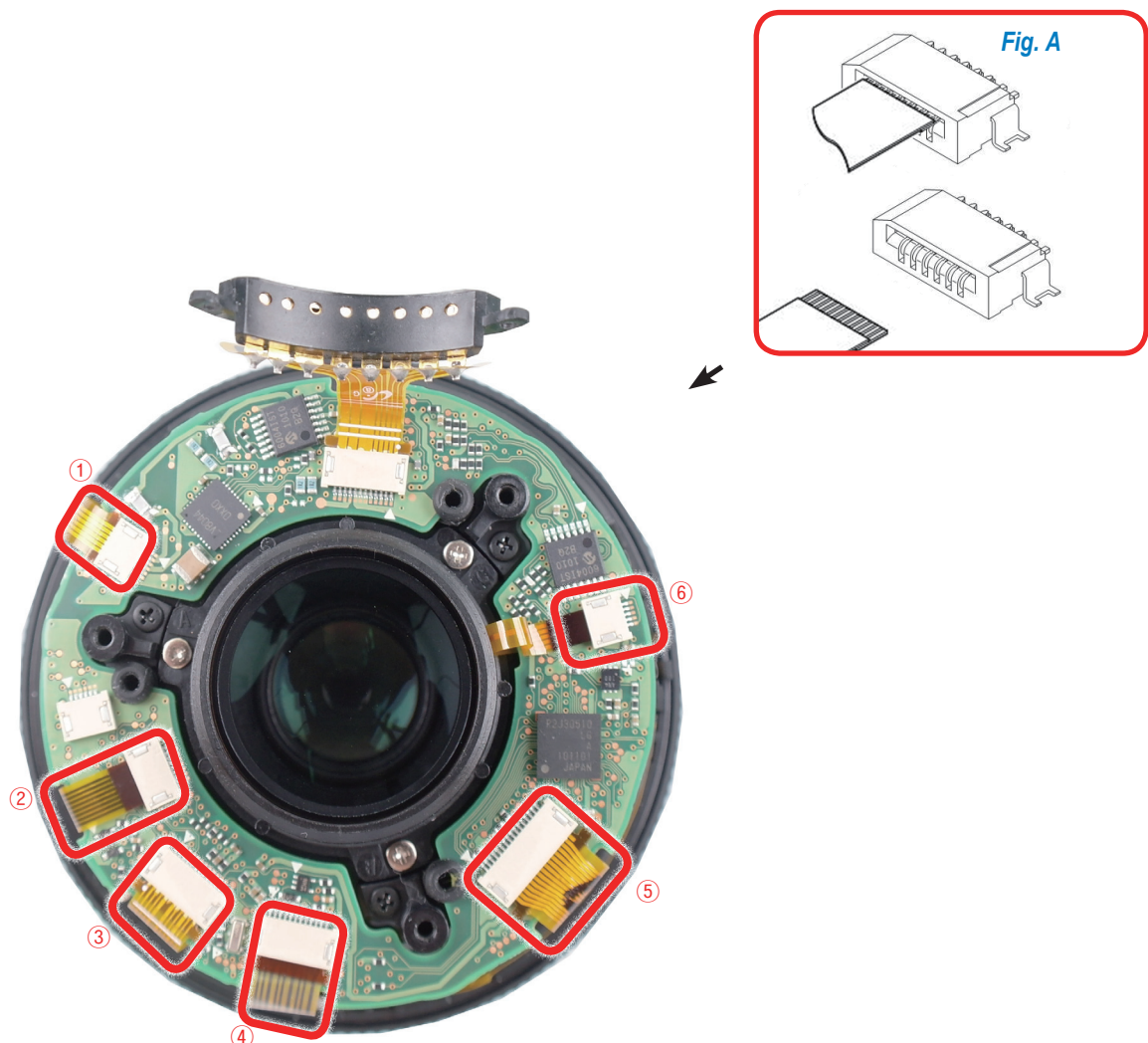


Fig 3-38

Assembling the ASSY BARREL COVER

1. Install the ASSY BARREL COVER.



Fig 3-39



Reference : Reference: Tighten the screws just enough to secure the ASSY BARREL COVER.

- Apply the LOCTITE on the three screws end (6001-001353). Insert the three screws and get all screws first, then tighten them just enough to secure the ASSY BARREL COVER.
Gently connect the FPCB as illustrated in image A.

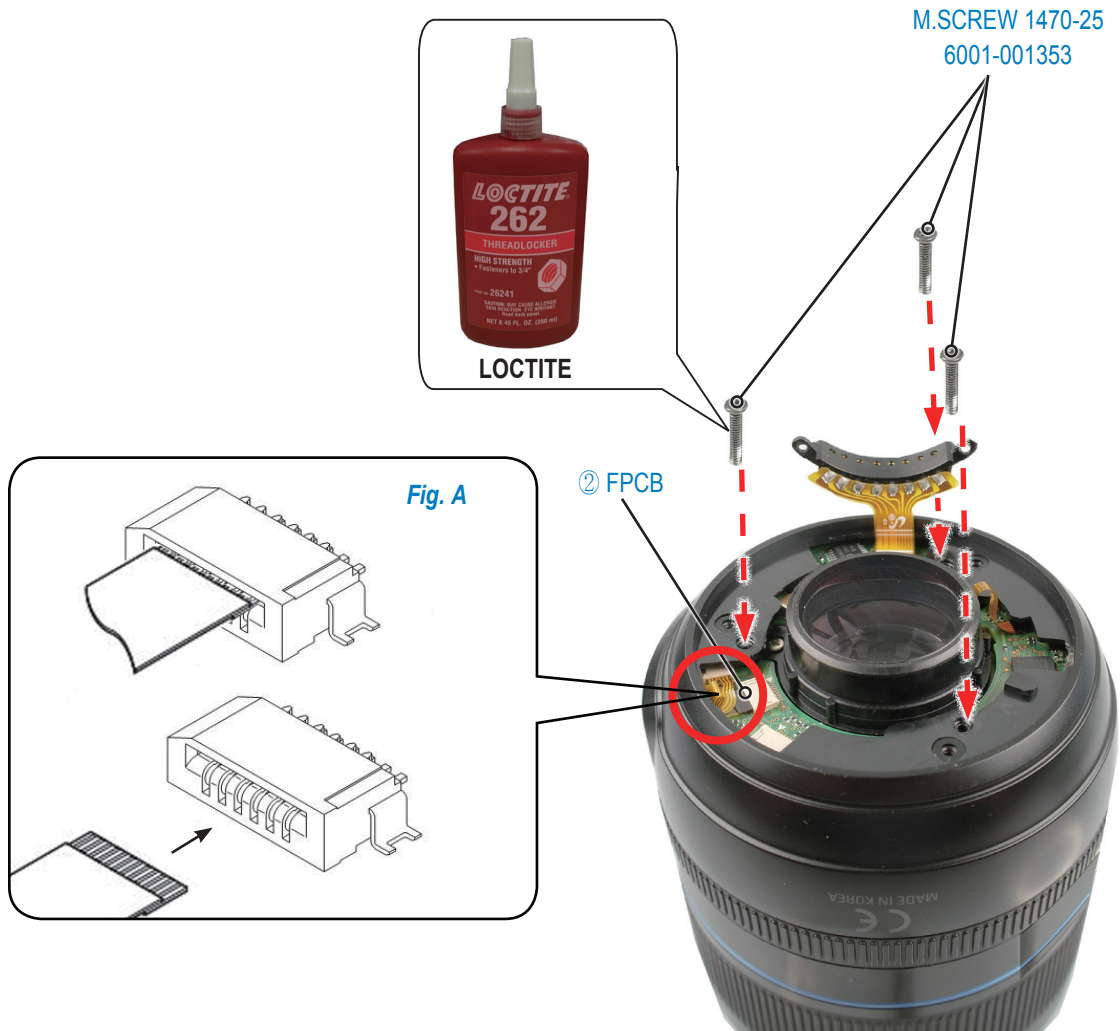


Fig 3-40

Assembling the LENS MOUNT



Reference : The number of the WASHER may vary in the number of punt according to the type of Lens.

1. Align the two of the WASHER BF ADJ 03 with the mount as illustrated in image A and install them. Install the LENS MOUNT.



Fig 3-41

2. After tightening the three screws (6003-001755), tighten the two screws (6001-002145).

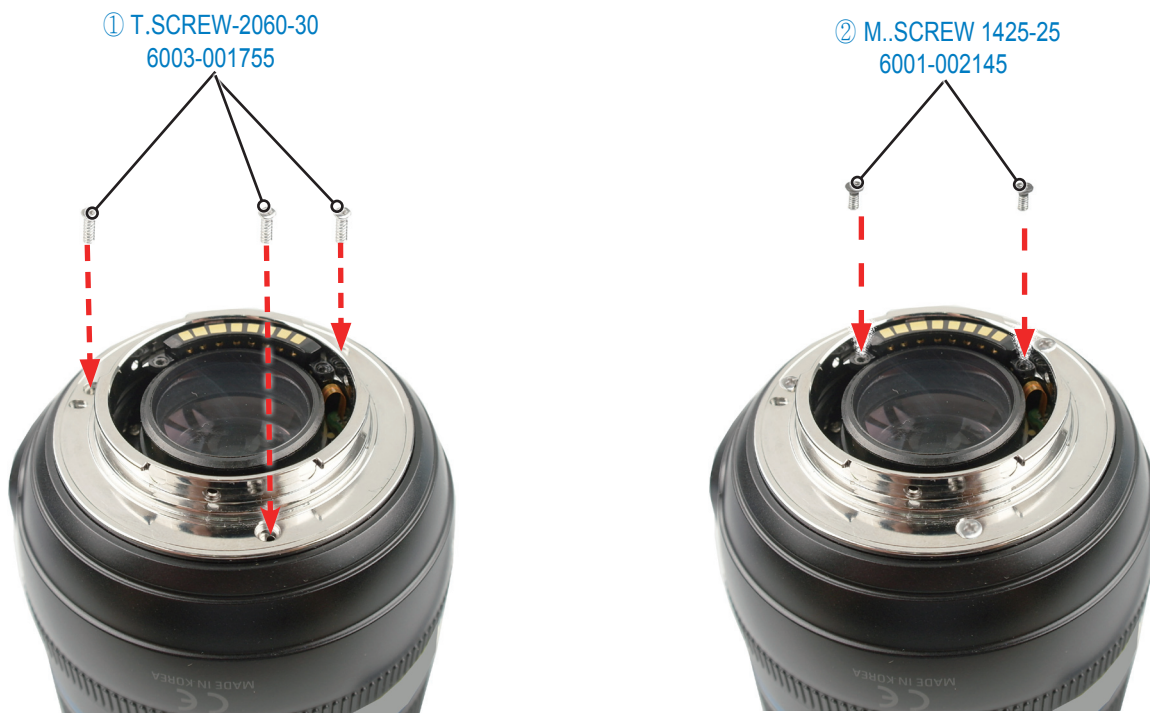


Fig 3-42

3. Install the COVER MOUNT, then tighten the three screws (6003-001674).

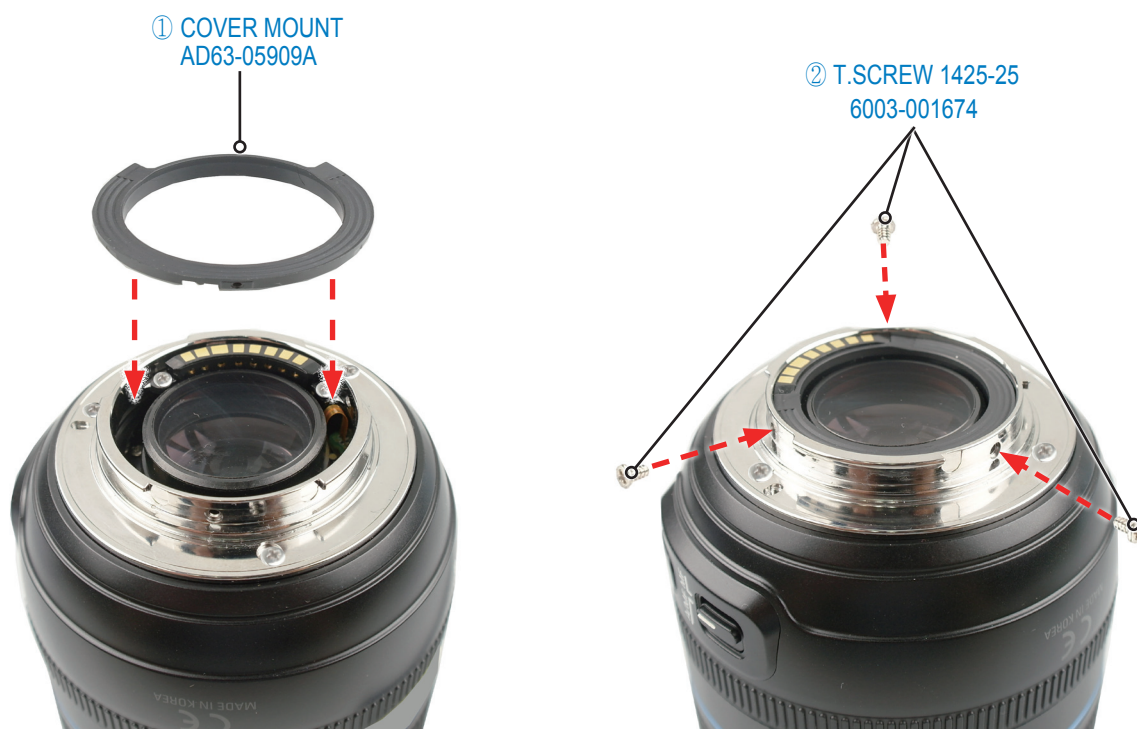


Fig 3-43

Assembling the GRIP FOCUS RUBBER

1. Install the GRIP FOCUS RUBBER.



Fig 3-44

Assembling the ASSY BARREL COVER FRONT



Caution: Replace with the new COVER 1ST FRONT and ASSY BARREL COVER FRONT because they are unable to reuse due to the scratch damage.

1. Be careful to properly align the position as illustrated in image A with the position as illustrated in image B. Install the COVER 1ST FRONT and the ASSY BARREL COVER FRONT in the direction of the arrow.

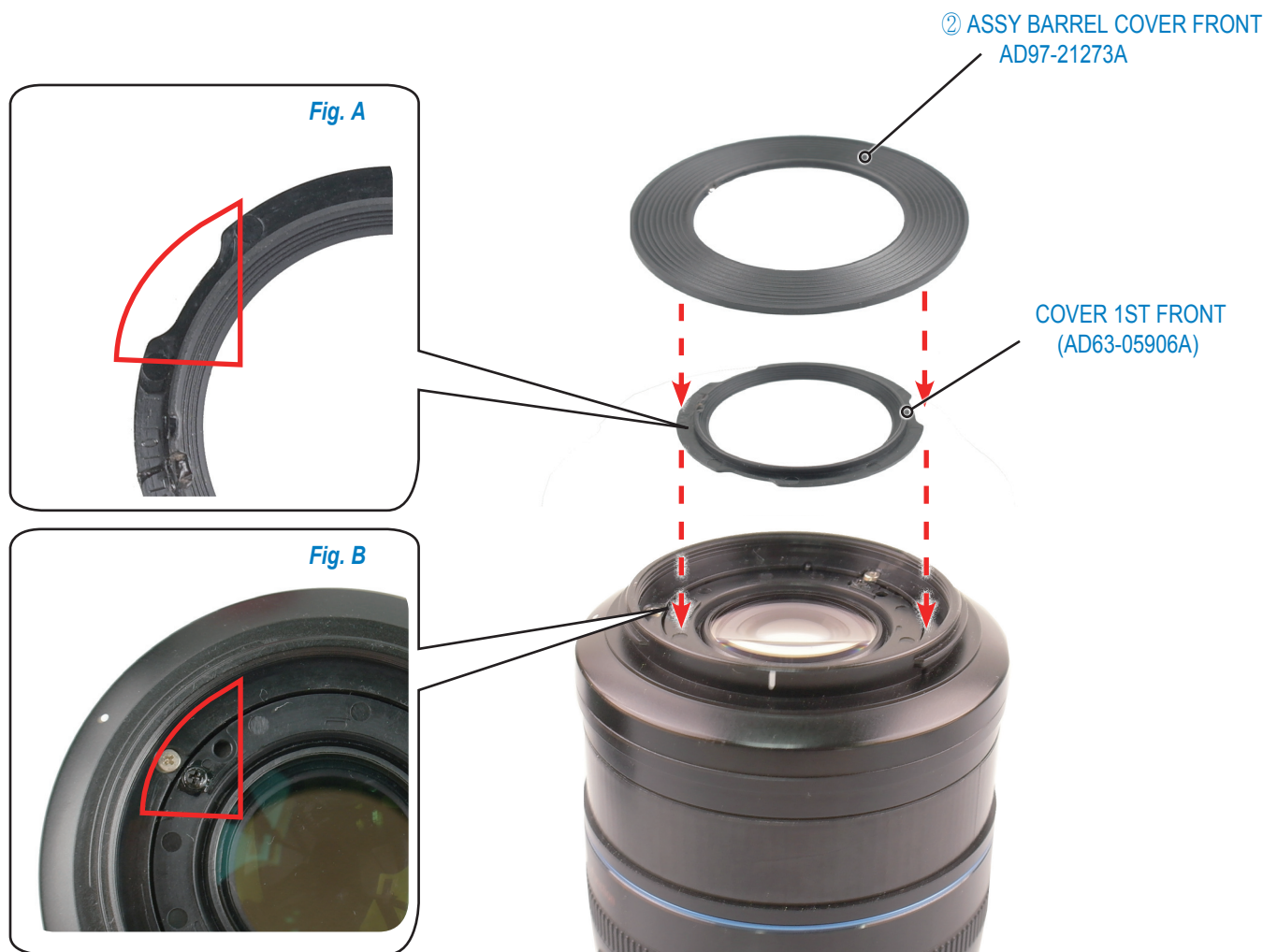
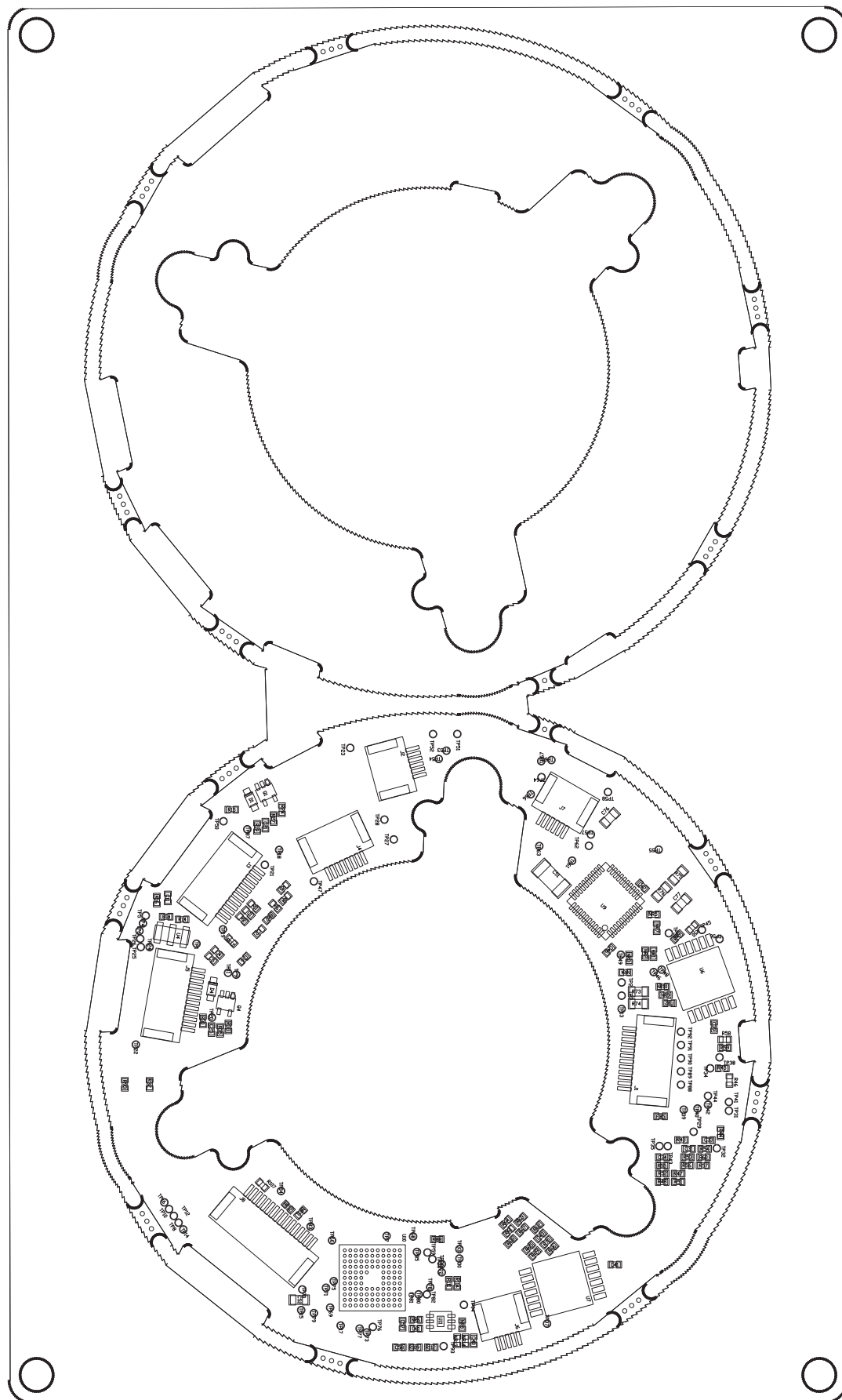


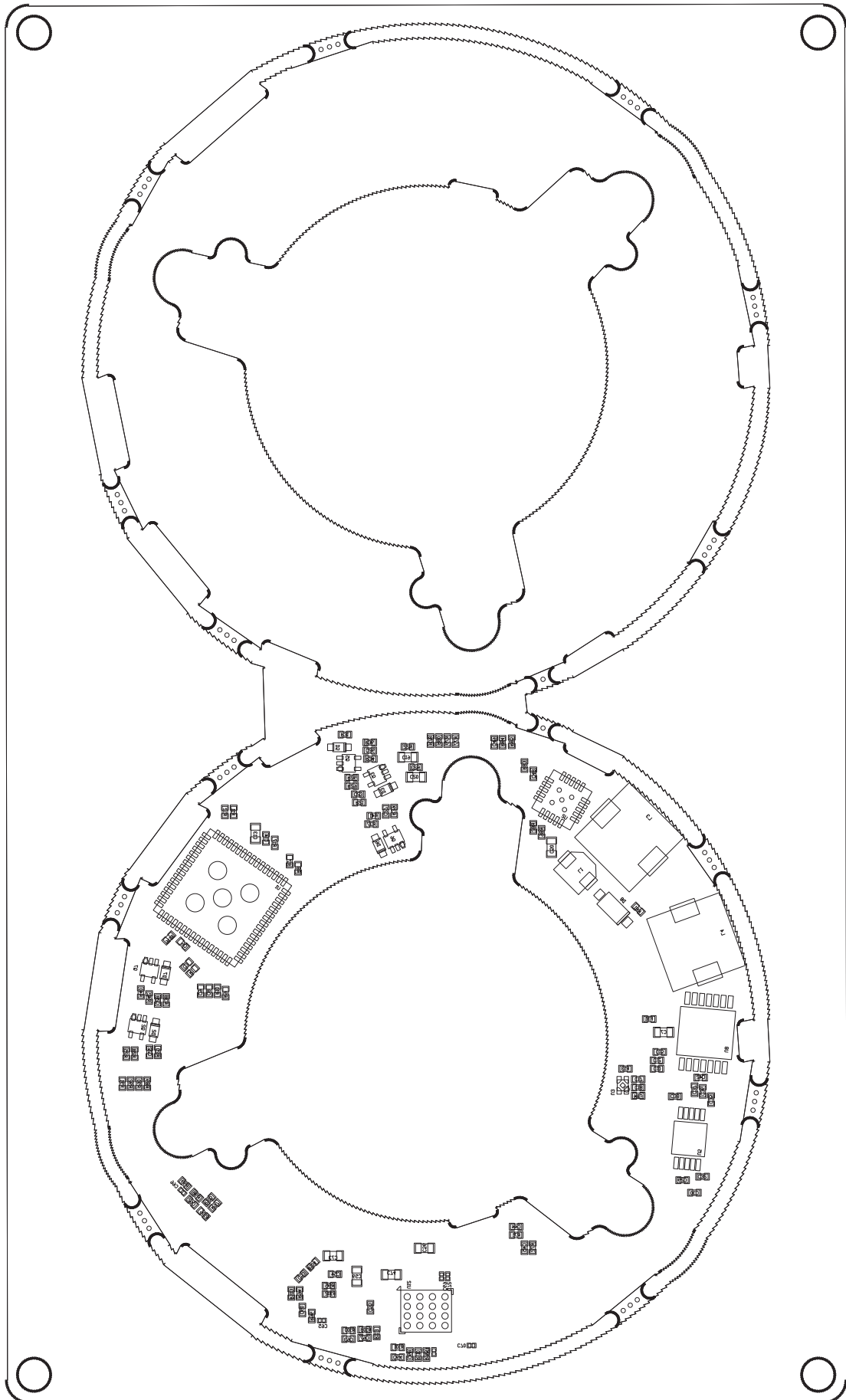
Fig 3-45

4. PCB diagrams

4-1 Main PCB (Top)

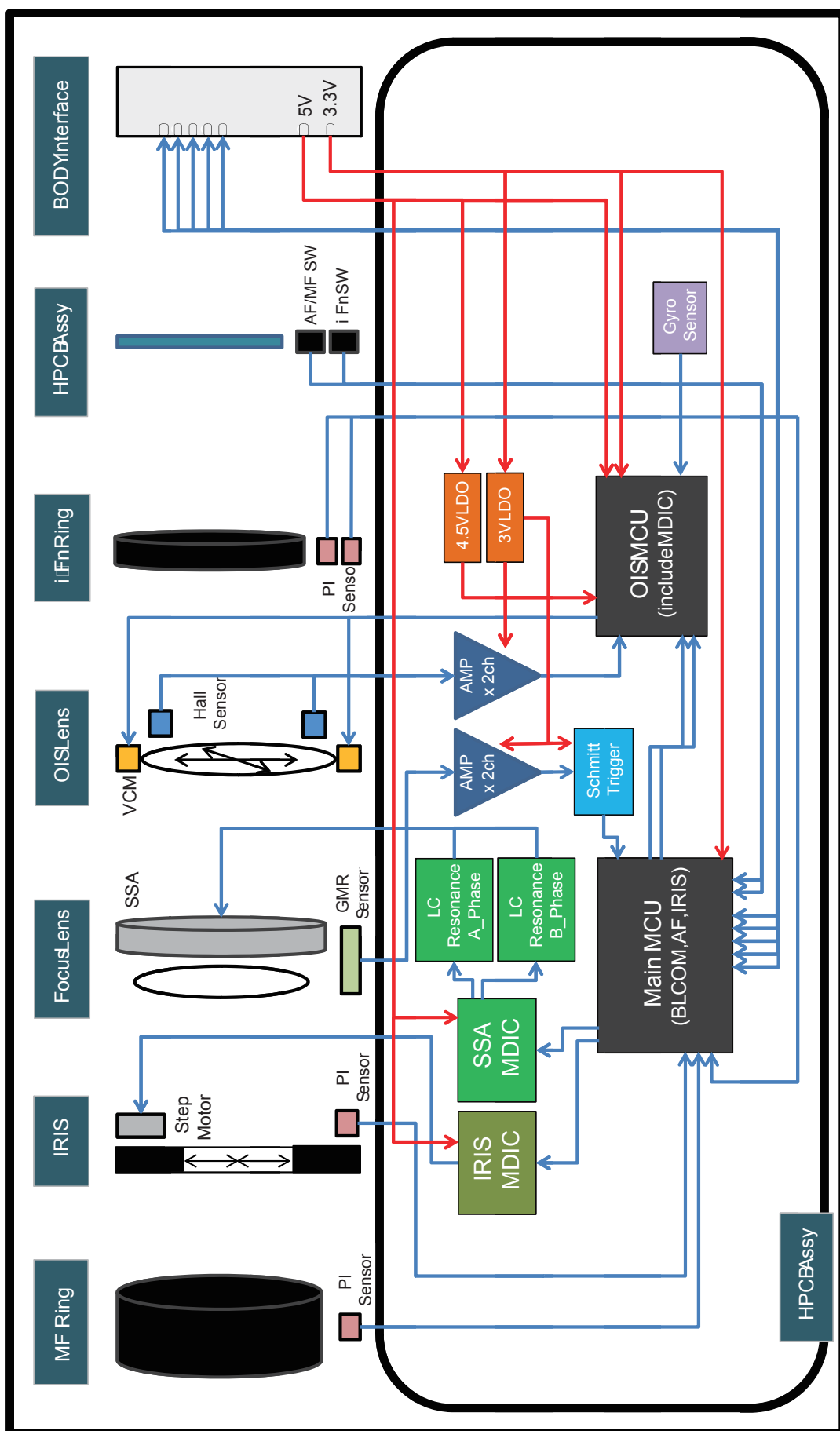


4-2 Main PCB(Bottom)



5. Block diagram

SAMSUNG 60 mm F2.8 Macro OIS SSA Block Diagram



6. Firmware update

6-1 Before upgrading the firmware

1. Make sure you use fully charged batteries. It is recommended that you use an AC adaptor for cameras that have an AC adaptor.
If fully charged batteries are not used, or the power is cut during a firmware upgrade, the lens may be seriously damaged, resulting in lens malfunction.
2. Before upgrading the lens firmware, make sure that you format the memory card on your PC or camera and then download the necessary firmware file. Since the memory card may not be suitable for lens firmware upgrade, depending on the model, check before you proceed with upgrading the lens firmware.
3. Download the lens firmware file into the root directory of the memory card. Also check that the lens firmware file downloaded has the correct file name for the camera's lens.
4. To upgrade lens firmware there should be sufficient free space on the memory card for the size of the lens firmware file.
If the lens firmware upgrade is not completed because of insufficient memory space, delete some of the files saved on the memory to secure more free space and then try again.
5. Do not operate the camera, remove the batteries, or cut the power while upgrading lens firmware. Operate the camera only after the lens firmware upgrade is complete.
6. Once the lens firmware is upgraded, it is not possible to restore the earlier version of the lens firmware. When the lens firmware is upgraded, all the camera settings are set to their default values. Since all the files stored in the internal memory will be deleted, ensure that files are copied to other storage devices before upgrading the lens firmware.

6-2 How to upgrade the firmware

If the batteries are completely discharged during the lens firmware upgrade, camera or lens malfunction may occur. Make sure to use fully charged batteries for safety. Ensure that you format the memory card before using it, and then save the lens firmware file on the formatted memory card.

1. Download the lens firmware file into the root directory of the memory card.
 - * When you upgrade the lens firmware, the lens which you upgrade must be attached on the camera.
 - If you can not attach the lens to the camera, you can not upgrade it.
 - * The file name of lens firmware is "lens.bin"
 - If there is a difference between attached lens and lens firmware file, you can find the "File Error" message.
2. Insert the memory card on which the lens firmware file is to be saved and then turn on the camera.
3. Press the menu button.
4. Move to "Setup Menu 3" (Press the left button of 4-way key.)
5. Select the "Firmware Update"
(After pressing the left button of 4-way key, press the OK button for 1 time.)

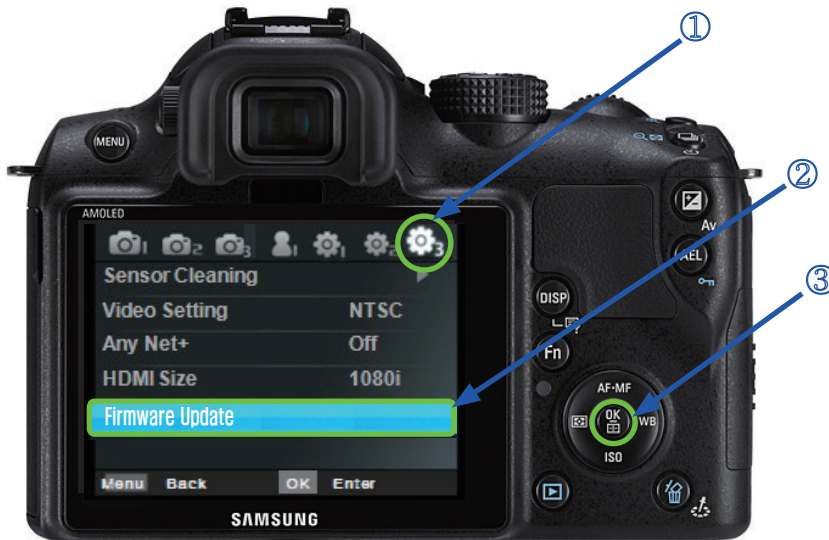


Fig. 6-1

6. Select the "Lens Firmware" . (Press the OK button for 1 time)

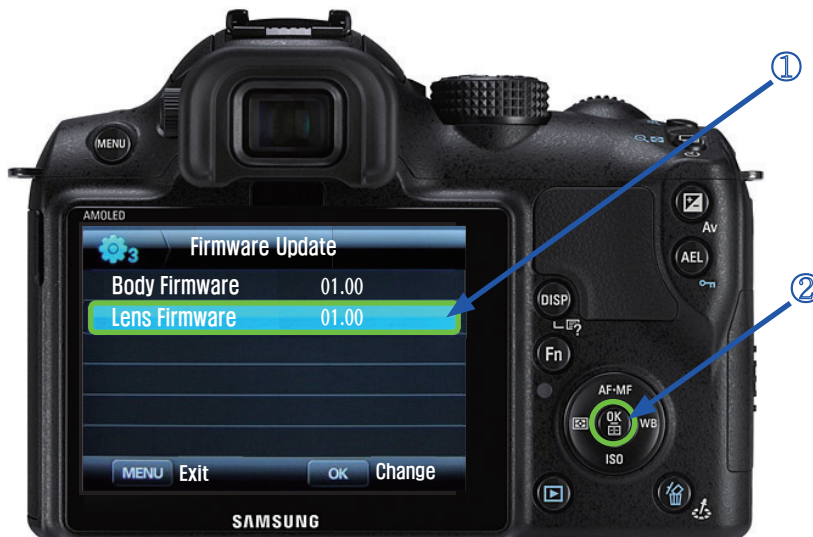


Fig. 6-2

7. Select **“Yes”** . (After pressing the down button of 4-way key, press the **OK** button for 1 time.)

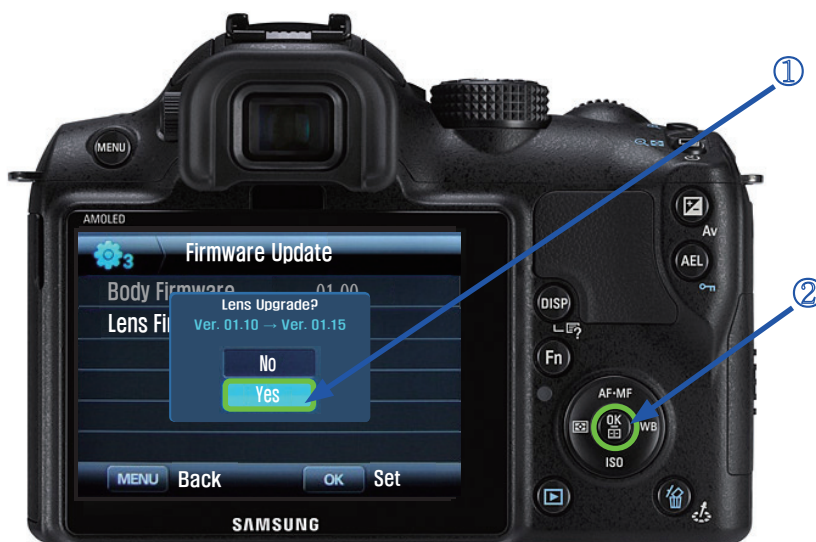


Fig. 6-3

8. The progress of the **Firmware** upgrade will be displayed on the **LCD** and the upgrade will proceed.



Fig. 6-4

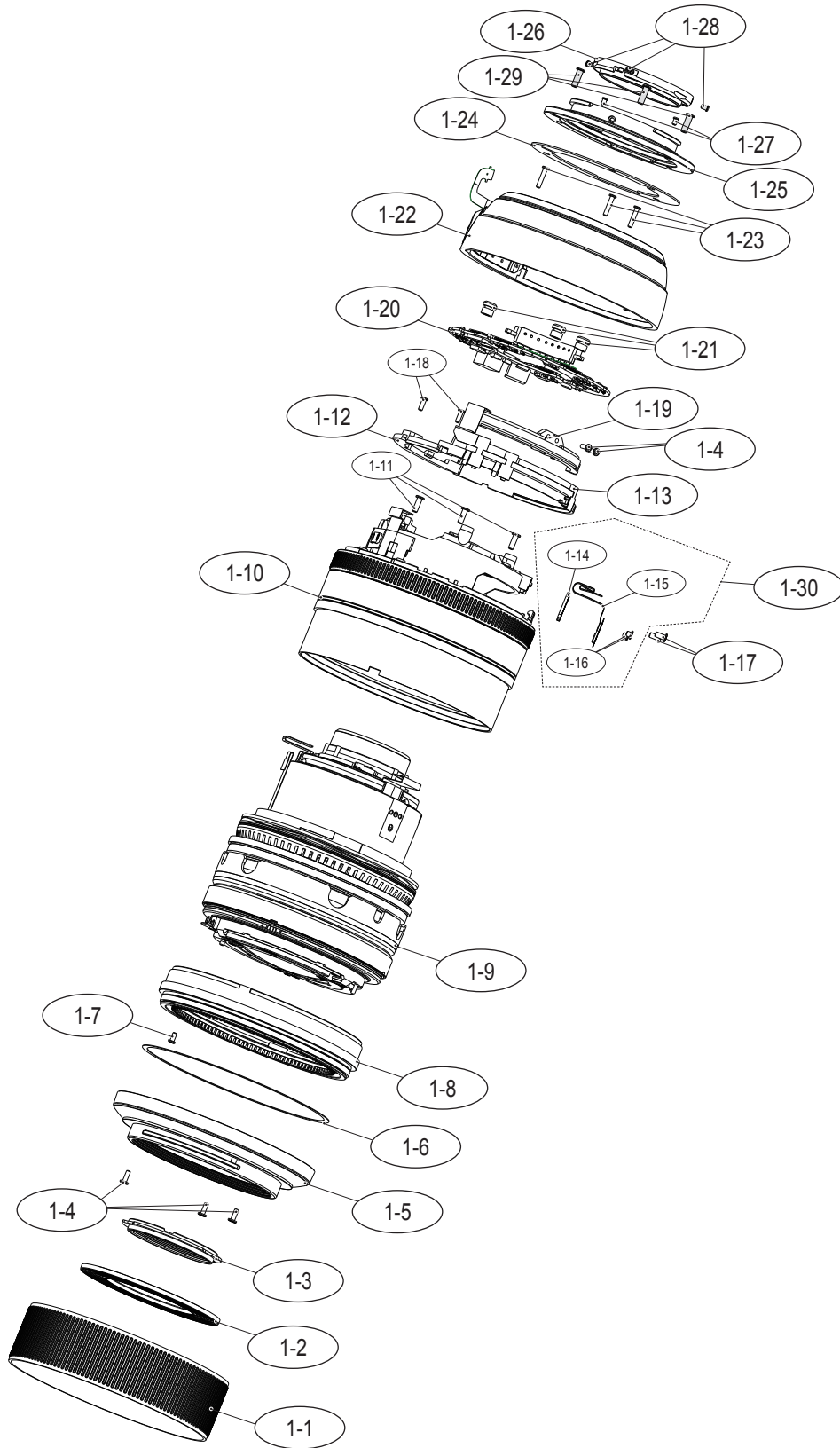
9. After finishing it, you can find the **“Update Completed”** message on the **LCD**.



Fig. 6-5

7. Exploded view and parts list

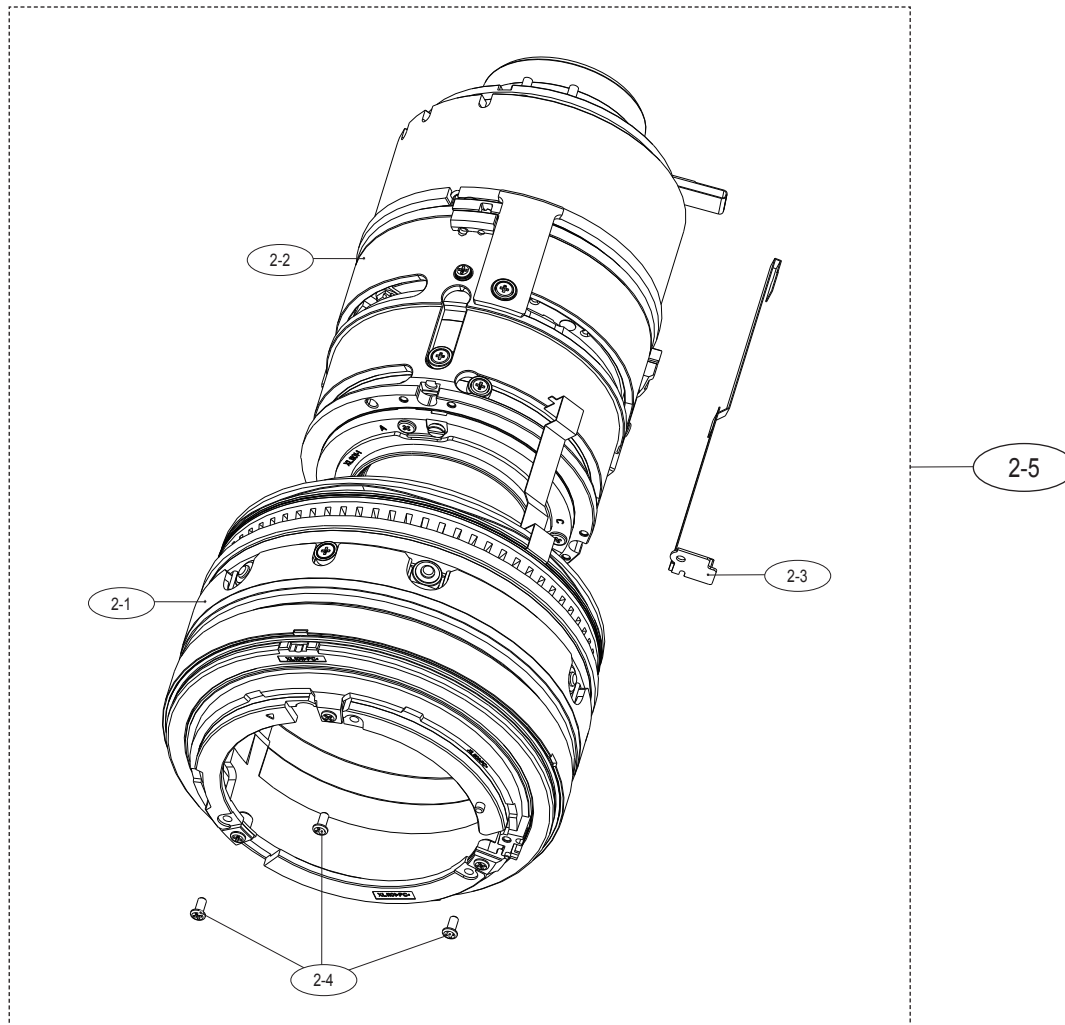
7-1 TOTAL BARREL ASSEMBLY



Exploded View and Parts List

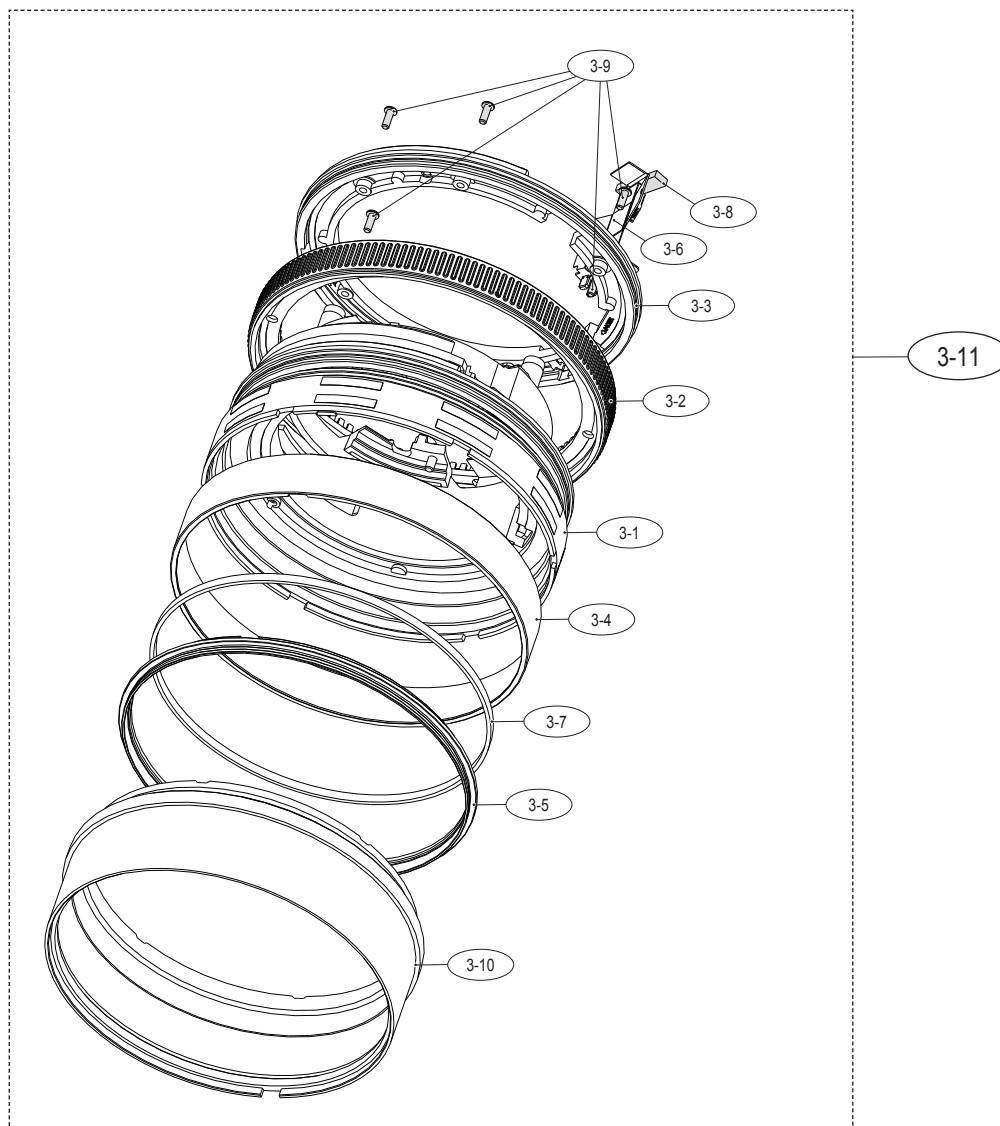
Loc. No	Parts No.	Description	Q ty	Available	Remark
1-1	AD63-06067A	GRIP FOCUS RUBBER	1	O	
1-2	AD97-21273A	ASSY BARREL COVER FRONT	1	O	
1-3	AD63-05906A	COVER 1ST FRONT	1	O	
1-4	6001-001575	SCREW 1435-30	5	O	
1-5	AD97-21304A	ASSY BARREL FILTER	1	O	
1-6	AD61-05220A	PLATE FOCUS GRIP	1	O	
1-7	6003-001670	SCREW 1435-30	1	O	
1-8	AD97-21274A	ASSY BARREL FOCUS GRIP	1	O	
1-9	AD97-21608A	ASSY BARREL MODULE SUB	1	O	
1-10	AD97-21271A	ASSY BARREL FIX	1	O	
1-11	6001-001508	SCREW 1750-30	3	X	
1-12	AD67-02104A	BARREL_AF_PI HOLDER_2	1	O	
1-13	AD92-01677A	AF PI FPCB ASSY	1	O	
1-14	AD61-05219A	PLATE GMR	1	X	
1-15	AD32-00046A	GMR SENSOR	1	X	
1-16	6001-002234	SCREW 1715-30	2	X	
1-17	6003-001703	SCREW 1735-30	2	O	
1-18	6003-001717	SCREW 1445-25	1	X	
1-19	AD97-21272A	ASSY BARREL BASE MR	1	O	
1-20	AD92-01748A	ASSY PCB LENS MAIN	1	O	
1-21	AD63-06066A	CUSHION PCB	3	O	
1-22	AD97-21270A	ASSY BARREL COVER	1	O	
1-23	6001-001353	SCREW 1470-25	3	O	
1-24	AD61-04206A	WASHER BF ADJ 03	2	O	
1-25	AD61-04237B	LENS MOUNT	1	O	
1-26	AD63-05909A	COVER MOUNT	1	O	
1-27	6001-002145	SCREW 1425-25	2	O	
1-28	6003-001674	SCREW 1425-25	3	O	
1-29	6003-001755	SCREW 2060-30	3	O	
1-30	AD97-21855A	ASSY SUB BARREL-GMR SENSOR	1	O	

7-2 BARREL MODULE SUB ASSEMBLY



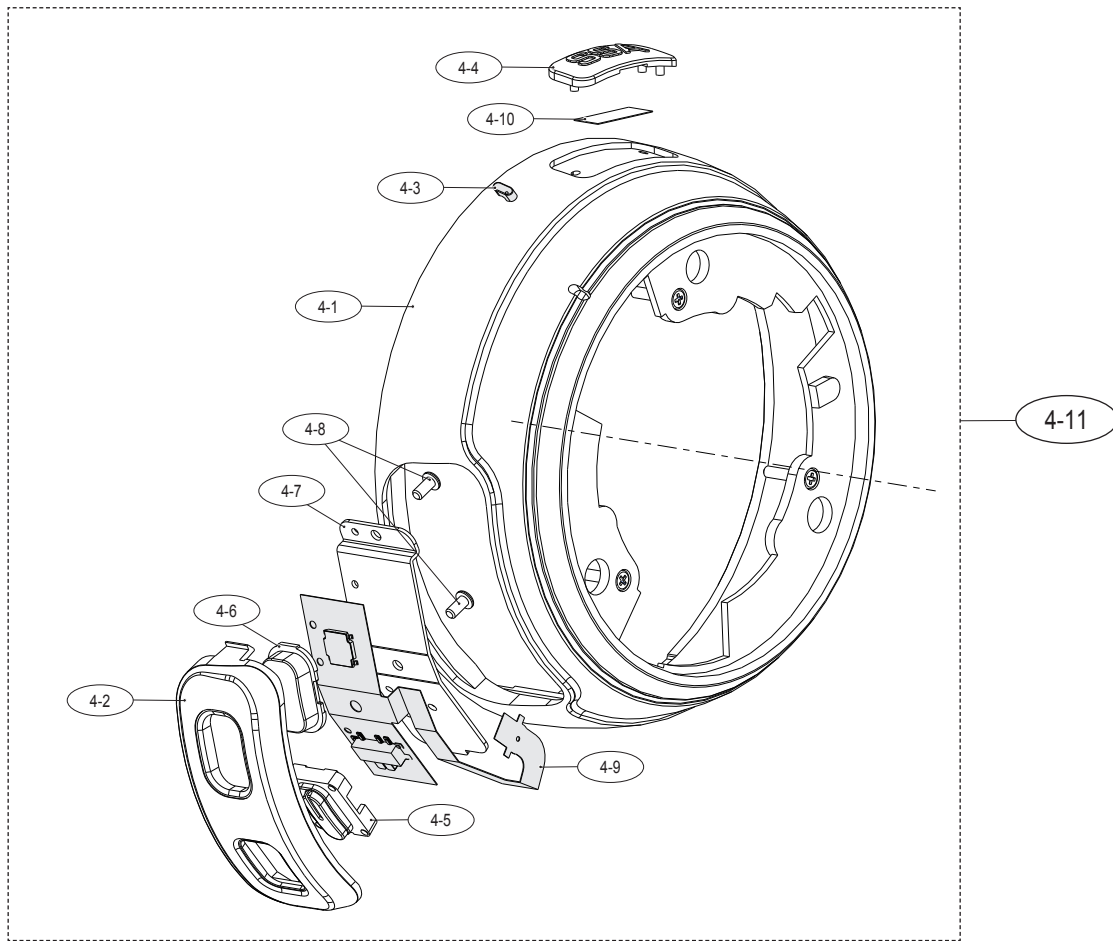
Loc. No	Parts No.	Description	Q ty	Available	Remark
2-1	AD97-21369A	ASSY BARREL SSA FTM	1	X	
2-2	AD97-21365A	ASSY BARREL ADJ SUB	1	X	
2-3	AD92-01678A	MF PI FPCB	1	X	
2-4	6001-002145	SCREW 1430-25	3	X	
2-5	AD97-21608A	ASSY BARREL MODULE SUB	1	O	

7-3 BARREL FIX ASSEMBLY



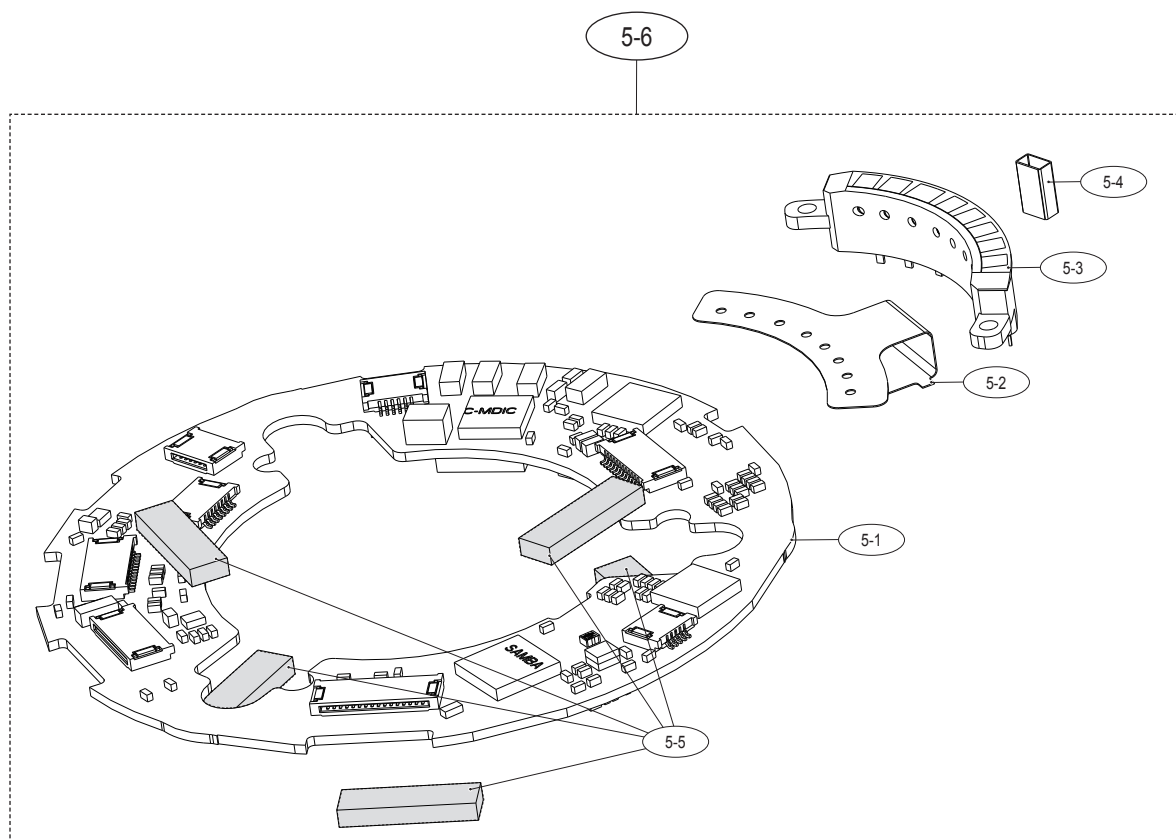
Loc. No	Parts No.	Description	Q ty	Available	Remark
3-1	AD67-02101A	BARREL FIX	1	X	
3-2	AD67-02102A	BARREL IF MODE GRIP	1	X	
3-3	AD67-02103A	BARREL AF PI HOLDER 1	1	X	
3-4	AD67-02122A	BARREL MIDDLE	1	X	
3-5	AD64-03335A	DECORING BLUE	1	X	
3-6	AD92-01679A	IF PI FPCB ASSY	1	X	
3-7	AD63-06086A	SHEILD TAPE	1	X	
3-8	AD63-06070A	SHEET PI PRESS	1	X	
3-9	6003-001717	SCREW 1445-25	6	X	
3-10	AD67-02107A	BARREL FOCUS GRIP 2	1	X	
3-11	AD97-21271A	ASSY BARREL FIX	1	O	

7-4 BARREL COVER ASSEMBLY



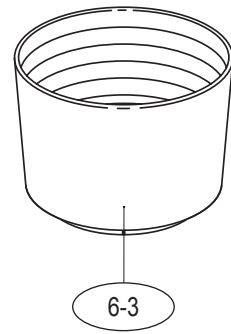
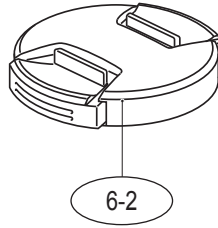
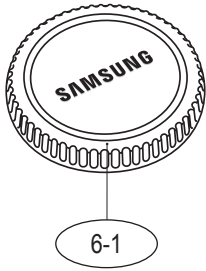
Loc. No	Parts No.	Description	Q ty	Available	Remark
4-1	AD67-02108A	BARREL MAIN	1	X	
4-2	AD64-03319A	BUTTON COVER	1	X	
4-3	AD66-00680A	BUTTON SET POINT	1	X	
4-4	AD64-03321A	BUTTON SSA	1	X	
4-5	AD64-03322A	BUTTON MODE	1	X	
4-6	AD64-03323A	BUTTON i-Fn	1	X	
4-7	AD61-05221A	PLATE BUTTON COVER	1	X	
4-8	6003-001706	SCREW 1430-25	2	X	
4-9	AD92-01680A	SWITCH FPCB ASSY	1	X	
4-10	AD63-06360A	T/SHEET BUTTON SSA	1	X	
4-11	AD97-21270A	ASSY BARREL COVER	1	O	

7-5 LENS MAIN PCB ASSEMBLY



Loc. No	Parts No.	Description	Q ty	Available	Remark
5-1	AD92-01676A	MAIN HPCB SMD ASSY	1	X	
5-2	AD41-01708A	CONTACT FPCB	1	X	
5-3	AD61-04213A	CONTACT ASSY	1	X	
5-4	AD63-04940A	CUSHION SHIELD FOAM-EMI GASKET	1	X	
5-5	AD63-06070A	SHEET PI PRESS	5	X	
5-6	AD92-01748A	ASSY PCB LENS MAIN	1	O	

7-6 PACKING ITEMS



Loc. No	Parts No.	Description	Q ty	Available	Remark
6-1	AD63-03989A	COVER-MOUNT CAP	1	0	
6-2	AD97-18604A	ASSY-52MM_FRONT_CAP	1	0	
6-3	AD97-21603A	ASSY BARREL-LENS HOOD-XL1101	1	0	



Area	Web Site
Europe, MENA, CIS, Africa	https://gspn1.samsungcportal.com
E.Asia, W.Asia, China, Japan	https://gspn2.samsungcportal.com
N.America, S.America	https://gspn3.samsungcportal.com

This Service Manual is a property of Samsung Electronics Co.,Ltd.
Any unauthorized use of Manual can be punished under
applicable International and/or domestic law.

© 2011 SAMSUNG Electronics Co.,Ltd
All rights reserved.
Printed in Korea
Code No: EC-NX lens