

---

## 7. Level 2 Repair

---

**WARNING : Discharge procedure for Xenon flash circuit's high voltage capacitor.**

### <How to use discharger>



1. name : High capacitance regulator condenser discharger

2. instructions

attach the (+) red, (-) black probes of the discharger to the (+), (-) leads of the connector respectively shown in the second picture below, then you will see a red lamp light of the discharger turn on.

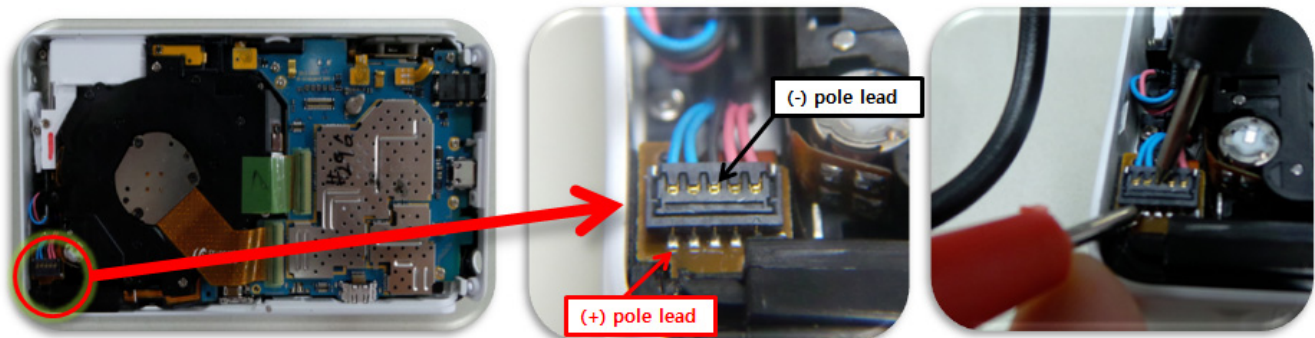
Keep hold onto the contacts with the leads until the red light goes off.

When the red light goes off, the high voltage of the capacitor is fully discharged and it is safe to touch.

3. Caution

- Keep wearing electrically insulated gloves.
- Keep hold onto the contacts until the red light goes off.
- It will take 5~10 seconds to fully discharge.
- While discharging, make sure the probes of the discharger do not touch the leads of the connector and the metal body at the same time.

### <Discharge Point>



※ for discharging, attach the red probe on the (+)pole lead , the black probe on the (-)pole lead.  
Pay extra care not to touch the metal case with the red probe while discharging.

## 7-1. Disassembly

<div data-bbox="167 296 245 348" data-label="Text">1</div> <div data-bbox="264 296 792 369" data-label="Text">1) Unscrew 7 screws on the left/right/bottom side</div> <div data-bbox="188 401 769 890" data-label="Image"> </div>	<div data-bbox="834 296 912 348" data-label="Text">2</div> <div data-bbox="915 296 1443 407" data-label="Text">1) Starting from the right side of the back cover and on clockwise, open the back cover using a plastic spudger.</div> <div data-bbox="912 432 1360 858" data-label="Image"> </div>
<div data-bbox="152 1018 779 1087" data-label="Text">1) Take care not to make scratches or damages when unscrewing.</div> <div data-bbox="152 1096 660 1171" data-label="Text">2) Screw size : 1.7 * 4.0 (6001-001719) TORQUE : 1.4~1.5 Kgf-cm</div>	<div data-bbox="815 1012 1440 1079" data-label="Text">1) Take care not to make scratches or damages when pry-opening.</div> <div data-bbox="826 1096 1412 1171" data-label="Text"> <p>WARNING : MAKE SURE THE DISCHARGE PROCEDURE FOR THE XENON FLASH CIRCUIT IS DONE. MAKE SURE WEARING ELECTRICALLY INSULATED GLOVES.</p> </div>
<div data-bbox="167 1283 245 1335" data-label="Text">3</div> <div data-bbox="264 1283 505 1318" data-label="Text">1) Open the left side.</div> <div data-bbox="211 1377 756 1659" data-label="Image"> </div>	<div data-bbox="834 1224 912 1276" data-label="Text">4</div> <div data-bbox="915 1218 1258 1276" data-label="Text">1) Detach the back cover 2) Detach the LCD connector..</div> <div data-bbox="924 1318 1349 1732" data-label="Image"> </div>
<div data-bbox="152 1785 779 1850" data-label="Text">1) Take care not to make scratches or damages when pry-opening.</div>	<div data-bbox="815 1785 1203 1850" data-label="Text">1) Try not to break the connector. 2) Try not to damage the FPCB..</div>

5

1) Unscrew the 5 screws on the front ass'y.

WARNING : MAKE SURE THE DISCHARGE PROCEDURE FOR THE XENON FLASH CIRCUIT IS DONE.  
MAKE SURE WEARING ELECTRICALLY INSULATED GLOVES.



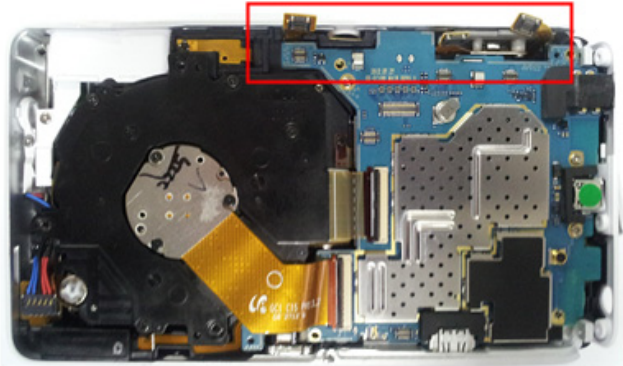
1) Take care not to make scratches or damages when unscrewing.

2) Screw size : 1.4 \* 3.5 (6001-002731)

TORQUE : 1.0~1.2 Kgf-cm

6

1) Disassemble the Power Key, Zoom Key, Sub PBA Connectors.

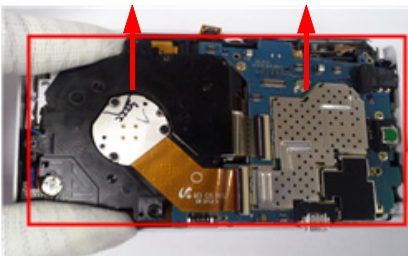
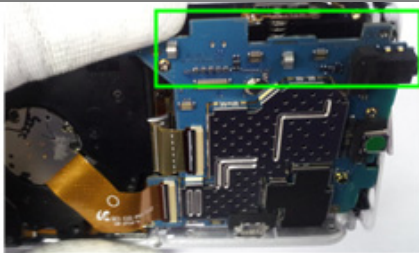


1) Try not to damage the connectors.

2) Try not to damage the FPCB..

7

1) Lift up the upper right side of the PBA.  
2) Lift up the lens module with the PBA.



1) Try not to damage the FPCB of the lens module.

8

1) FRONT Ass'y & MAIN Barrel Ass'y when disassembly finished.

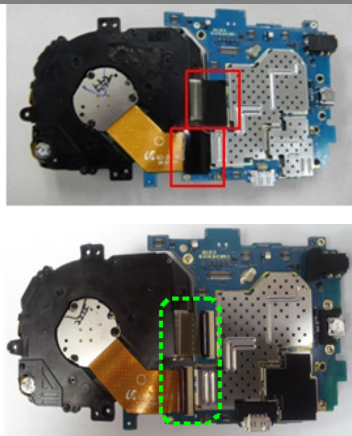


1) Try not to damage the parts and preserve for the next step.



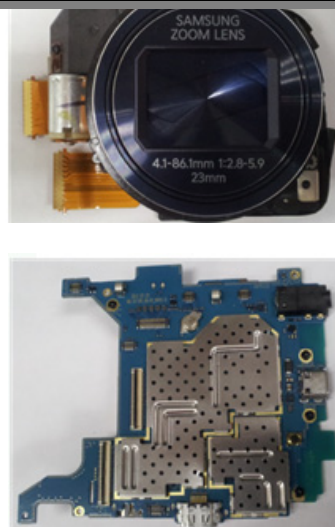
9

- 1) Remove the 2 insulation tapes on the connectors.
- 2) disconnect the connector from the PBA



10

- 1) Detach the lens module from the PBA(PBA disassembly finished)



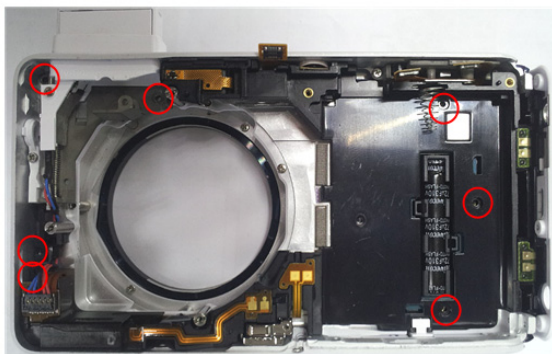
- 1) Try not to damage the FPCB.

- 1) Try not to damage the FPCB.
- 2) Try not to damage the PBA.

11

- 1) Unscrew the 7 screws on the Chamber Ass'y and Flash Module Ass'y

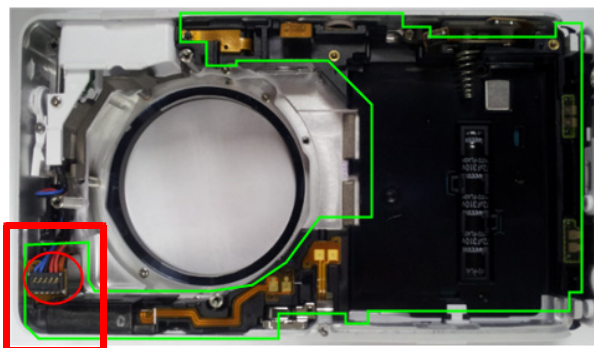
**WARNING : MAKE SURE THE DISCHARGE PROCEDURE FOR THE XENON FLASH CIRCUIT IS DONE.  
MAKE SURE WEARING ELECTRICALLY INSULATED GLOVES.**



- 1) Take care not to make scratches or damages when unscrewing.
- 2) Screw size : 1.4 \* 3.5 (6001-002731)  
TORQUE : 1.0~1.2 Kgf-cm

12

- 1) Disconnect the Flash Module Ass'y connector
- 2) Detach the Chamber Ass'y from the front



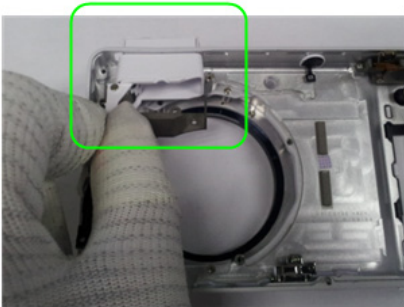
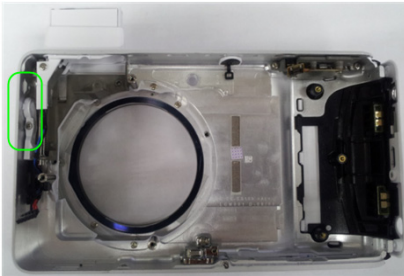
Beware electric shock

- 1) Try not to damage the parts and FPCB when using sharp tweezers.
- 2) Beware the possibility of electric shock on the spot indicated on the picture.

13

- 1) Press the Flash Pop up Lever on the left.
- 2) Disassemble the Flash Module Ass'y from the Front.

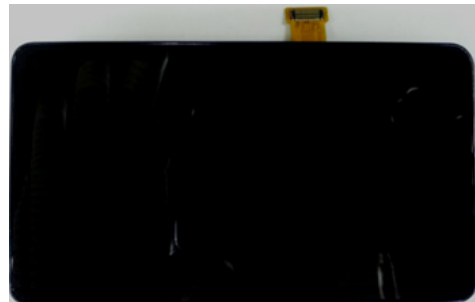
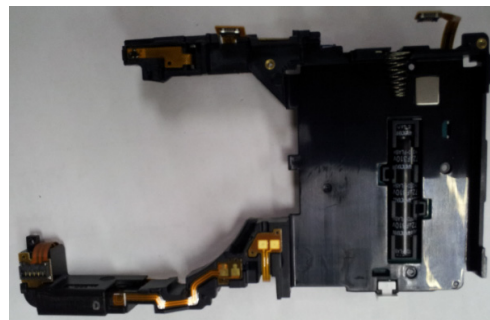
WARNING : MAKE SURE THE DISCHARGE PROCEDURE FOR THE XENON FLASH CIRCUIT IS DONE.  
MAKE SURE WEARING ELECTRICALLY INSULATED GLOVES.



- 1) Try not to damage the plastics and wires.

14

- 1) Disassembly Finished (Front Ass'y)



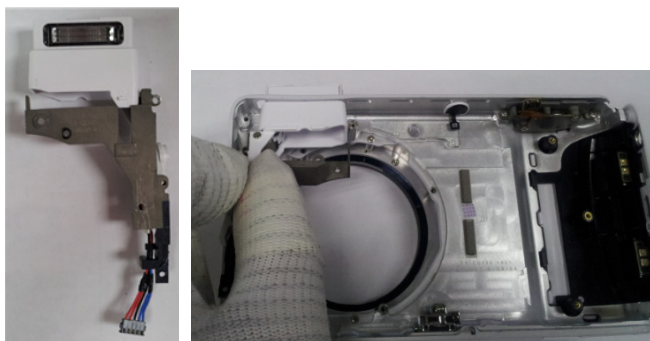
- Disassembly Finished

## 7-2. Assembly

1

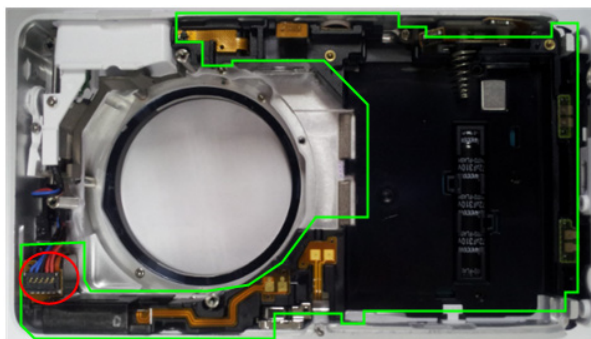
- 1) Assemble the Flash Module Ass'y to the Front

**WARNING : MAKE SURE THE DISCHARGE PROCEDURE FOR THE XENON FLASH CIRCUIT IS DONE.  
MAKE SURE WEARING ELECTRICALLY INSULATED GLOVES.**



2

- 1) Put on the Chamber Ass'y on the Front.
- 1) Connect the Flash Module Ass'y connector.

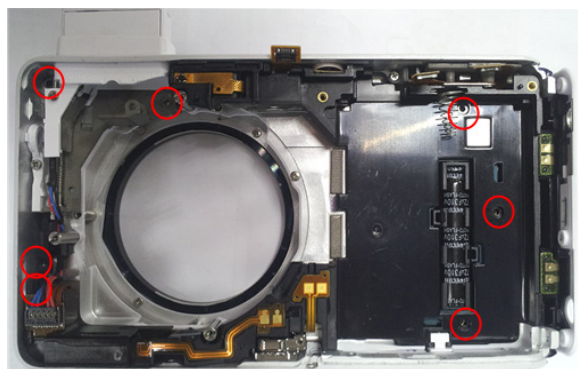


- 1) Try not to damage the parts.

- 1) Try not to damage the parts or the FPCB.

3

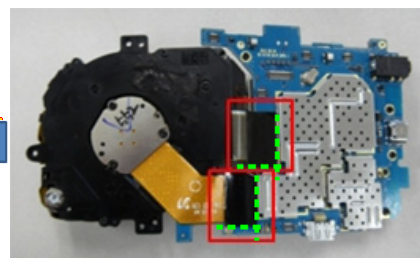
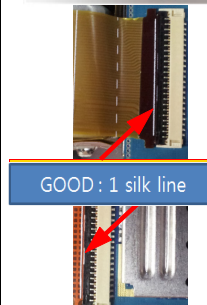
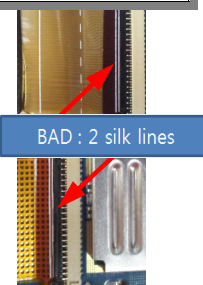
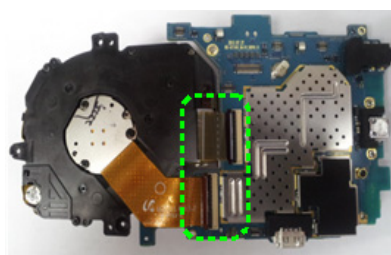
- 1) Screw up on the 7 points at the Chamber Ass'y and Flash Module Ass'y.



- 1) Try not to damage the plastics or make scratches.
- 2) Screw size : 1.4 \* 3.5 (6001-002731)  
TORQUE : 1.0~1.2 Kgf·cm

4

- 1) Connect the FPCB of the lens module.
- 2) Attach the insulation tapes on the connector to avoid the lid's lifting up.

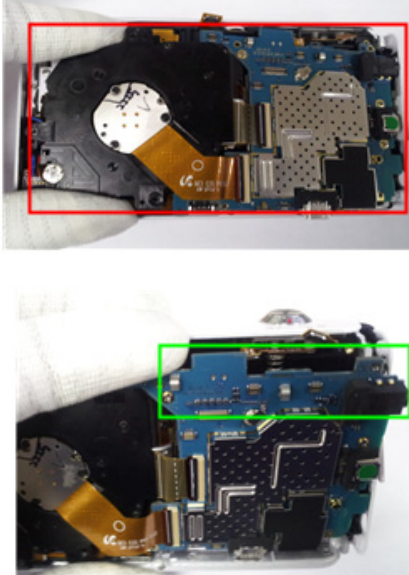


- 1) Push to the very end until the FPCB's Silk line align with the side and one silk line left showing.



5

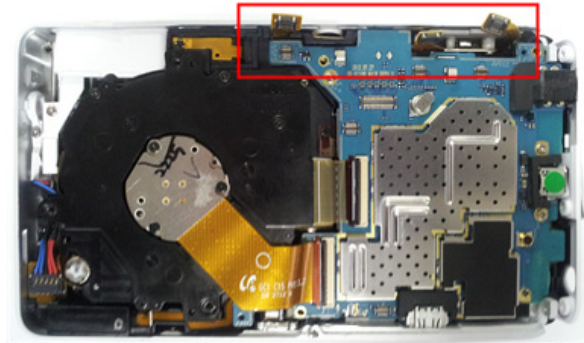
1) After the lens module is safely put on, assemble the PBA starting from the lower side to the upper side.



- 1) Try not to damage the FPCB.
- 2) Try not to damage the gaskets on the Mg. bracket.

6

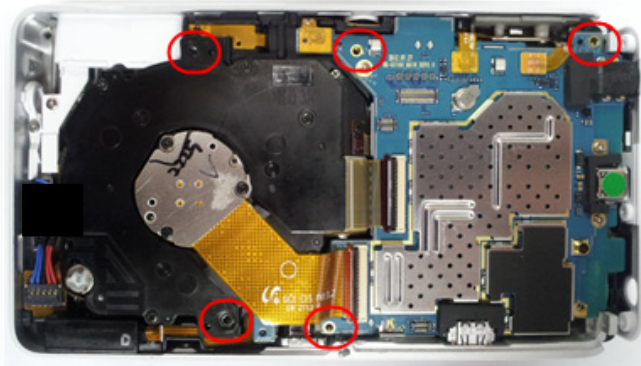
1) Connect the Power Key, Zoom Key, Sub PBA to the PBA.



- 1) Try not to break the connector.
- 2) Try not to damage the FPCB.

7

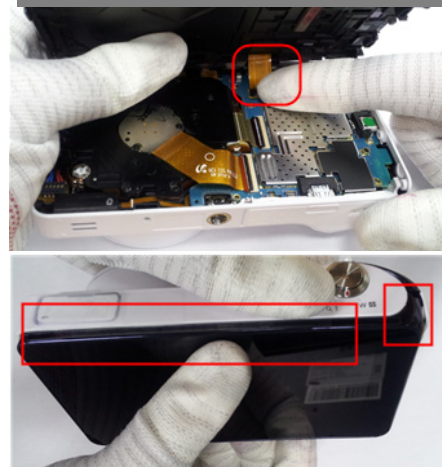
1) Screw up on the 5 points of the Front Ass'y.



- 1) Take care not to make scratches or damages when screwing.
- 2) Screw size : 1.4 \* 3.5 (6001-002731)  
TORQUE : 1.0~1.2 Kgf-cm

8

1) Connect the LCD connector..  
2) Assemble the Back Cover starting from the upper side.



- 1) Try not to damage the FPCB.
- 2) Make sure the LCD connector connected during the assemble procedure.

<div data-bbox="167 237 792 338"> <div>9</div> <div>1) Assemble the lower and either side part of the back cover.</div> </div> <div data-bbox="220 352 737 928"> </div>	<div data-bbox="831 237 1456 296"> <div>10</div> <div>1) Screw the 7 points.</div> </div> <div data-bbox="831 296 1456 903"> </div>
<div>1) Take care not to get dust in, to damage the parts or make scratches when assembling.</div>	<div>1) Take care not to make scratches or damages when screwing.</div> <div>2) Screw size : 1.7 * 4.0 (6001-001719)</div> <div>TORQUE : 1.4~1.5 Kgf·cm</div>
<div data-bbox="167 1123 792 1182"> <div>11</div> <div>1) Final inspection(assembling finished)</div> </div> <div data-bbox="233 1182 724 1751"> </div>	<div data-bbox="147 1780 808 1864"> <div>1) Check if there is any scratch outside or if the click sensation is right, or the screw is screwed up properly.</div> </div>